

HAMPTON ROADS DISTRICT DESIGN UNIT

SURVEYED BY: J. B. HARRIS (17/10/05) 0657
SUPERVISED BY: CHERYL STANIMERS (17/10/05) 2638
DESIGNED BY: LEE CHAPMAN (17/10/05) 3900
CAD OPERATOR: [unreadable] (17/10/05) 4104
REVISED BY:

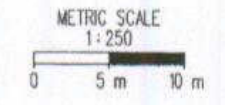
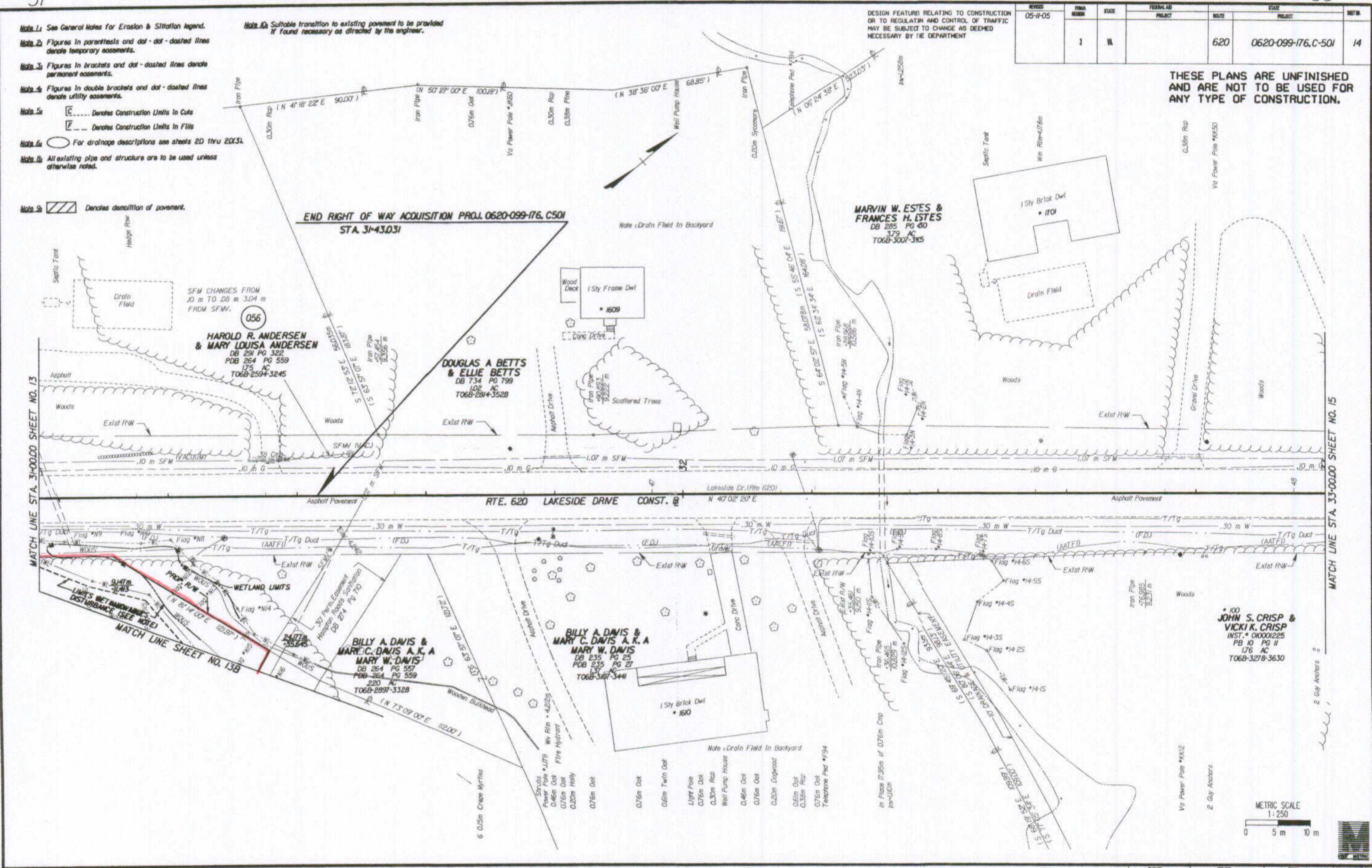
- Note 1: See General Notes for Erosion & Siltation legend.
- Note 2: Figures in parenthesis and dot-dashed lines denote temporary easements.
- Note 3: Figures in brackets and dot-dashed lines denote permanent easements.
- Note 4: Figures in double brackets and dot-dashed lines denote utility easements.
- Note 5: [Symbol] Denotes Construction Limits In Cuts
[Symbol] Denotes Construction Limits In Fills
- Note 6: [Symbol] For drainage descriptions see sheets 2D thru 2DX3.
- Note 7: All existing pipe and structure are to be used unless otherwise noted.
- Note 8: [Symbol] Denotes demolition of pavement.

Note 10: Suitable transition to existing pavement to be provided if found necessary as directed by the engineer.

DESIGN FEATURES RELATING TO CONSTRUCTION OR TO REGULATION AND CONTROL OF TRAFFIC MAY BE SUBJECT TO CHANGE AS DEEMED NECESSARY BY THE DEPARTMENT

| REVISED | FORMA | STATE | FEDERAL AID | STATE | ROUTE | PROJECT | DATE |
|----------|-------|-------|-------------|-------|-------|--------------------|------|
| 05-11-05 | | VA | | | 620 | 0620-099-176.C-501 | 14 |

THESE PLANS ARE UNFINISHED AND ARE NOT TO BE USED FOR ANY TYPE OF CONSTRUCTION.



| PLAT NO. | PROJECT | SHEET NO. |
|----------|--------------|-----------|
| A | 0620-099-176 | 14 |