

HAMPTON ROADS DISTRICT SIGN UNIT

DESIGNED BY: J. B. HARRIS
SUPERVISED BY: J. B. HARRIS
DESIGNED BY: LEE, CHAMBERS, & ASSOCIATES
CADD OPERATOR: J. B. HARRIS
REVISIONS BY:

2/4/2005 BSH/MS

42.9.24.0992.1123.25.1.100

42.9.24.0992.1123.25.1.100

27

28

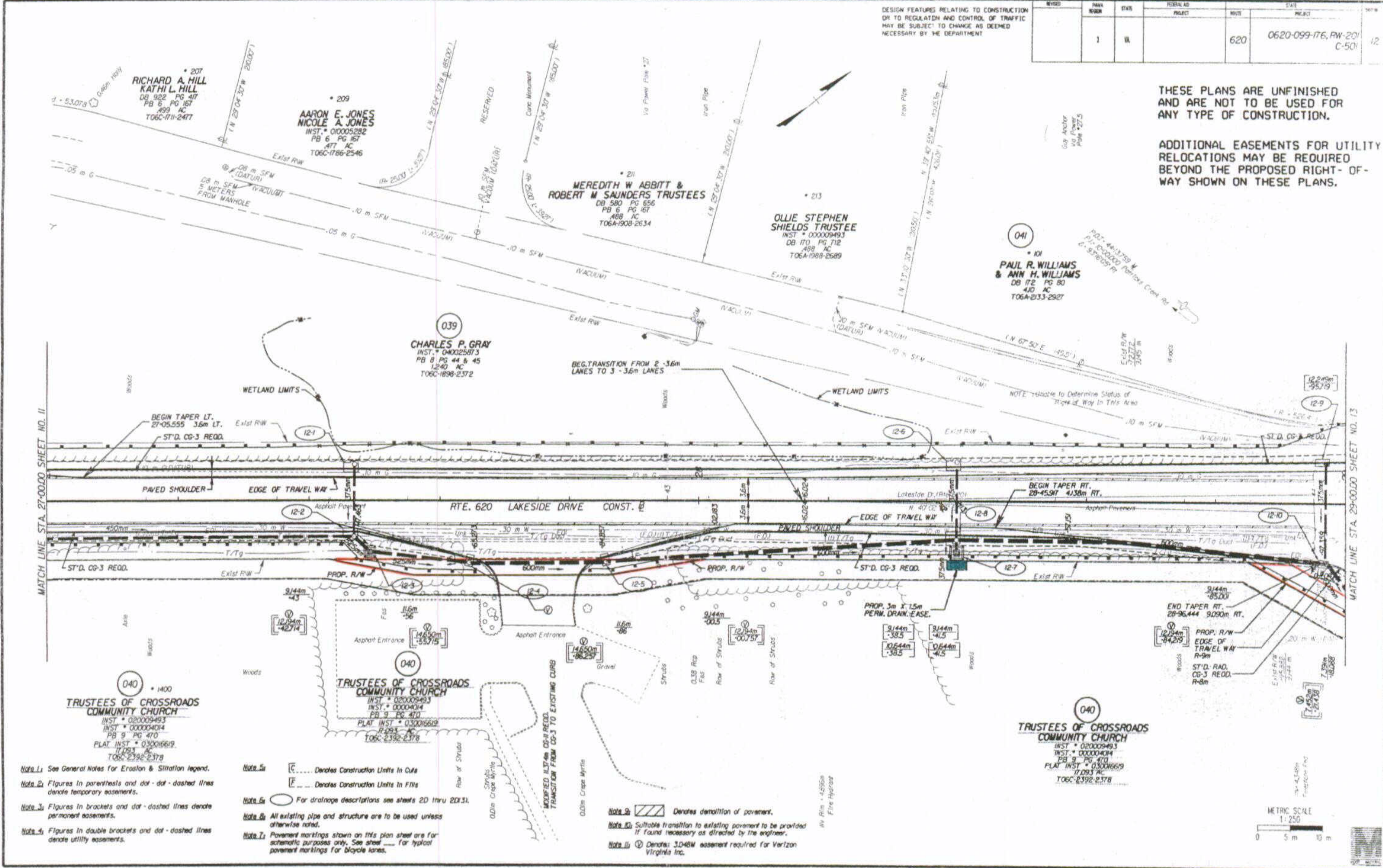
29

DESIGN FEATURES RELATING TO CONSTRUCTION OR TO REGULATION AND CONTROL OF TRAFFIC MAY BE SUBJECT TO CHANGE AS DEEMED NECESSARY BY THE DEPARTMENT

NO.	DATE	DESCRIPTION
1	11	620
		0620-099-176, RW-201 C-501

THESE PLANS ARE UNFINISHED AND ARE NOT TO BE USED FOR ANY TYPE OF CONSTRUCTION.

ADDITIONAL EASEMENTS FOR UTILITY RELOCATIONS MAY BE REQUIRED BEYOND THE PROPOSED RIGHT-OF-WAY SHOWN ON THESE PLANS.



- Note 1: See General Notes for Erosion & Stratification legend.
- Note 2: Figures in parentheses and dot-dot-dashed lines denote temporary easements.
- Note 3: Figures in brackets and dot-dashed lines denote permanent easements.
- Note 4: Figures in double brackets and dot-dashed lines denote utility easements.

- Note 5: [E] Denotes Construction Units In Cuts
- Note 6: [F] Denotes Construction Units In Fills
- Note 7: [O] For drainage descriptions see sheets 2D thru 2D31.
- Note 8: All existing pipe and structure are to be used unless otherwise noted.
- Note 9: Pavement markings shown on this plan sheet are for schematic purposes only. See sheet _____ for typical pavement markings for bicycle lanes.

- Note 10: [Hatched] Denotes demolition of pavement.
- Note 11: Suitable transition to existing pavement to be provided if found necessary as directed by the engineer.
- Note 12: [V] Denotes 3.048m easement required for Verizon Virginia Inc.



State Highway

Flat Book No. 9 Page 232 Instr. 060011630

0620-099-176

12