

VICINITY MAP
1"=2000'
ADC PERMITTED USE NO. 20605142



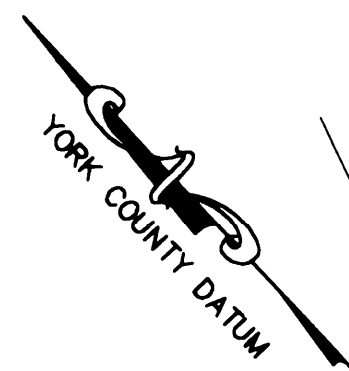
PLAT OF EASEMENT DEDICATION
FROM
DIGGES COMPANY
TO THE
COUNTY OF YORK, VIRGINIA
BRUTON DISTRICT
YORK COUNTY, VIRGINIA
DATE: MAY 24, 2006
REVISED: AUGUST 2, 2006
SCALE: 1"=60'



Engineers • Planners • Surveyors
Landscape Architects • Environmental Consultants
4029 IRONBOUND ROAD SUITE 100
WILLIAMSBURG, VIRGINIA 23188
(757) 253-2975 FAX: (757) 229-0049

Filed in the Clerk's Office, Circuit Court,
York Co. - Poquoson VA
the 20th day of Sept, 2006
12:40 PM
Wit: Lynn S. Jenkins, Clerk
by *[Signature]* S.S.

PLAT INSTRUMENT # 060023119



CENTERLINE OF STREAM
IS PROPERTY LINE

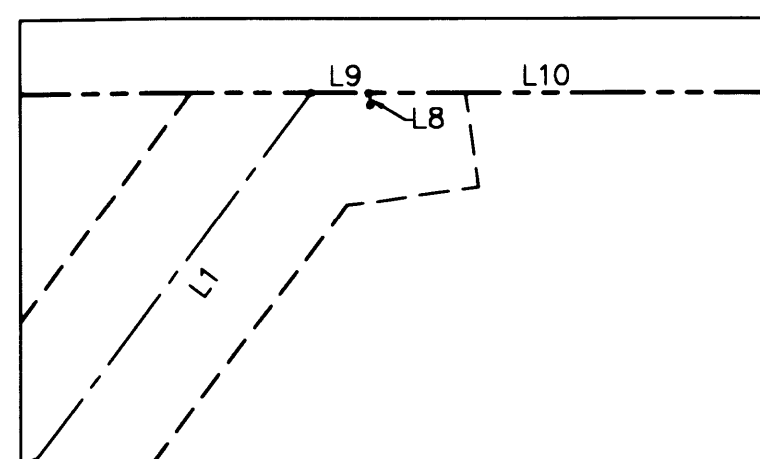
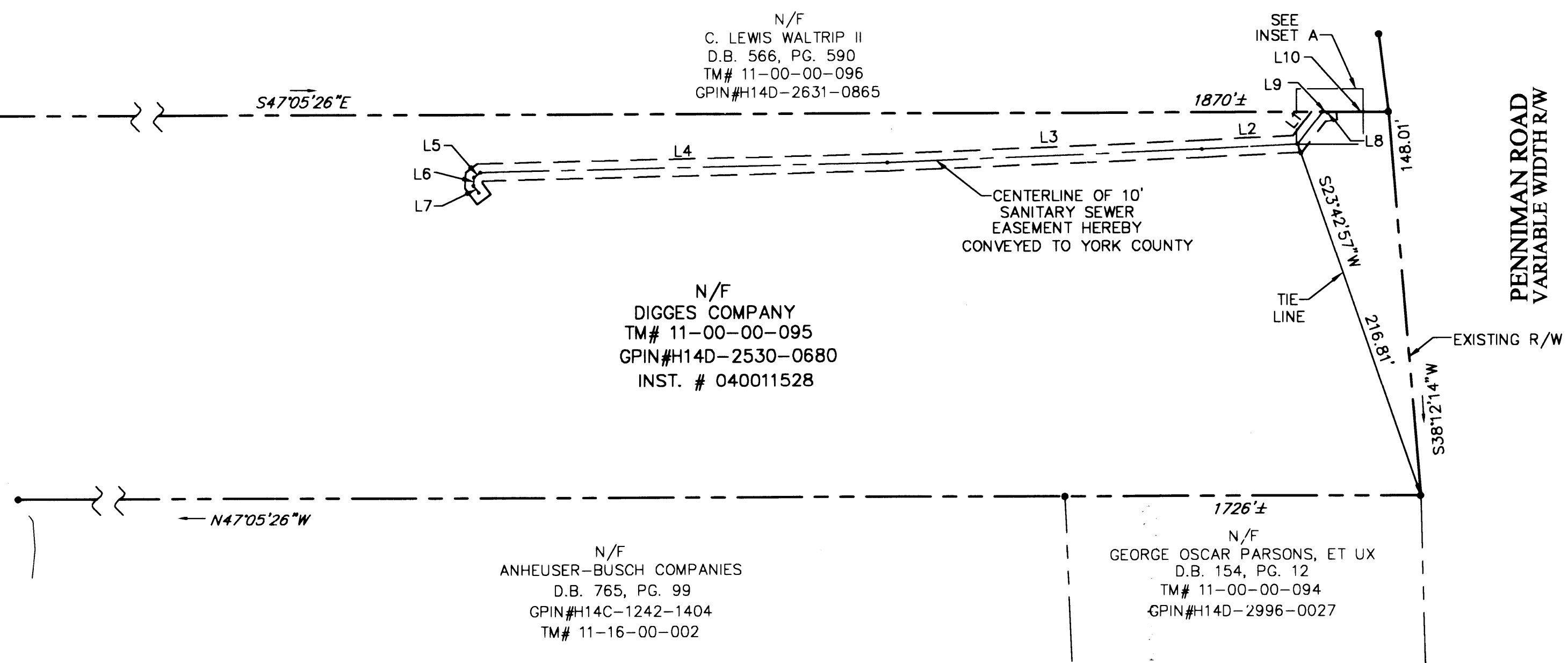
N/F
ANHEUSER-BUSCH COMPANIES
D.B. 765, PG. 99
GPIN#H14C-1242-1404
TM# 11-16-00-002

N/F
C. LEWIS WALTRIP II
D.B. 566, PG. 590
TM# 11-00-00-096
GPIN#H14D-2631-0865

N/F
DIGGES COMPANY
TM# 11-00-00-095
GPIN#H14D-2530-0680
INST. # 040011528

N/F
ANHEUSER-BUSCH COMPANIES
D.B. 765, PG. 99
GPIN#H14C-1242-1404
TM# 11-16-00-002

N/F
GEORGE OSCAR PARSONS, ET UX
D.B. 154, PG. 12
TM# 11-00-00-094
GPIN#H14D-2996-0027



INSET A
SCALE: 1"=10'

EASEMENT CENTERLINE LINE TABLE		
LINE	LENGTH	BEARING
L1	23.97'	S80°02'13"W
L2	65.77'	N49°54'38"W
L3	183.37'	N49°23'13"W
L4	237.66'	N48°15'48"W
L5	4.69'	N84°37'53"W
L6	4.87'	S46°32'52"W
L7	5.09'	S05°46'17"W
L8	0.61'	S34°58'58"W
L9	3.01'	S47°05'26"E
L10	35.37'	S47°05'26"E

THE PROPERTY AS DEPICTED ON THIS PLAT
DOES NOT VIOLATE THE PROVISIONS OF THE
YORK COUNTY SUBDIVISION ORDINANCE

SIGNED: *[Signature]*
TITLE: DIR. OF ENVIRONMENTAL & DEVELOPMENT SERVICES
DATE: 9/19/06

2006 SEP 20 PM 12:40

1990078-008-07 penniman Warehouse sewer asbuilts