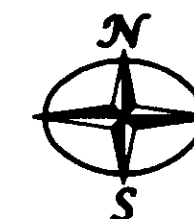


PLAT SHOWING
 BOUNDARY LINE ADJUSTMENT BETWEEN
PARCEL "A"
 OWNED BY YORKTOWN-RIVERMEADE, LLC
 AND
PARCEL "B"
 OWNED BY YORKTOWN-RIVERMEADE II, LLC
 NELSON DISTRICT - YORK COUNTY, VIRGINIA

CURVE TABLE						
CURVE	LENGTH	RADIUS	DELTA	TANGENT	CHORD	CHORD BEARING
C1	272.10'	60.00'	259°50'09"	71.71'	92.04'	N39°42'04"W
C2	34.83'	25.00'	79°50'09"	20.92'	32.08'	N50°17'56"E

MAY 1, 2006
 SHEET 2 OF 2
 SCALE: 1" = 60'



Simmons Newsome, P.C.
 Surveyors - Planners
 110A Dare Road
 Yorktown, Virginia 23692
 Phone (757) 898-4914 Fax (757) 898-7184

LEGEND

- Iron Pipe/Rod Set (IPS) (IRS)
- Concrete Monument Set
- Iron Pipe/Rod Found (IPF) (IRF)
- Concrete Monument Found
- RPA Resource Protection Area
- RMA Resource Management Area



According to information provided by Dominion Due Diligence Group in its letter dated July 18, 2006 to Simmons Newsome, P.C., "None of the area contained in this subdivision is within a Resource Protection Area or Resource Management Area."

APPROVED:
 YORK COUNTY BOARD OF SUPERVISORS

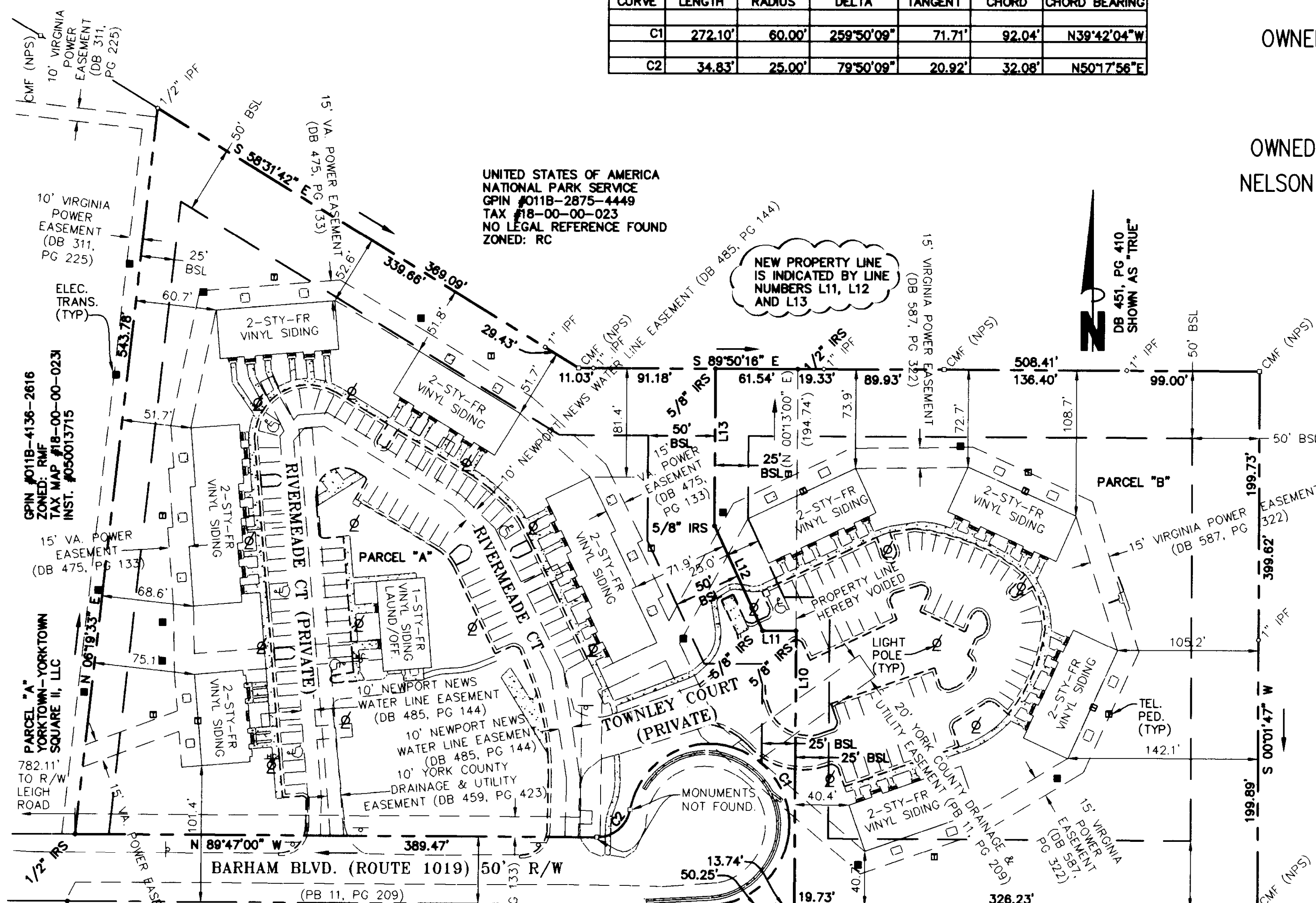
BY: Al Maddalena
 Plat Approving Agent

DATE: 10/12/06

STATE OF VIRGINIA
 COUNTY OF YORK

In the Clerk's Office of the Circuit Court for the County of York-Poquoson, the 11th day of Oct, 2006, this map was presented and admitted to record as the law directs in instrument # 060025366

TESTE: Lyn S. Seal Clerk
 BY: Al Maddalena



UNITED STATES OF AMERICA
 NATIONAL PARK SERVICE
 GPIN #011B-2875-4449
 TAX #18-00-00-023
 NO LEGAL REFERENCE FOUND
 ZONED: RC

GPIN #011B-4136-2616
 ZONED: RMF
 TAX MAP #18-00-00-0231
 INST. #050013715

YORK COUNTY SCHOOL BOARD
 TAX MAP #18-00-00-023A
 GPIN #0110-4461-1762
 ZONED: RC
 DB 156, PG 234

PARCEL ONE
 YORK COUNTY SCHOOL BOARD
 TAX MAP #18-00-00-022
 GPIN #110-0235-1713
 ZONED: RC
 DB 85, PG 186
 PB 5, PG 116

LINE TABLE		
LINE	LENGTH	BEARING
L1	20.56'	N42°21'11"W
L2	34.92'	N02°50'04"W
L10	204.55'	N00°13'00"E
L11	25.00'	N89°47'00"W
L12	85.62'	N25°02'37"W
L13	117.25'	N00°13'00"E

2006 OCT 16 PM 1:02