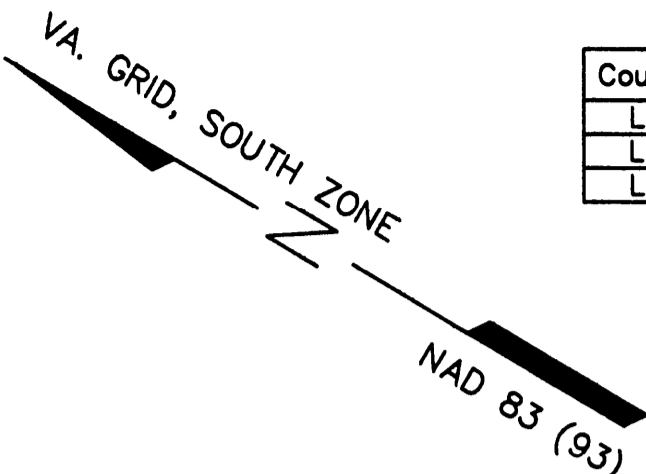
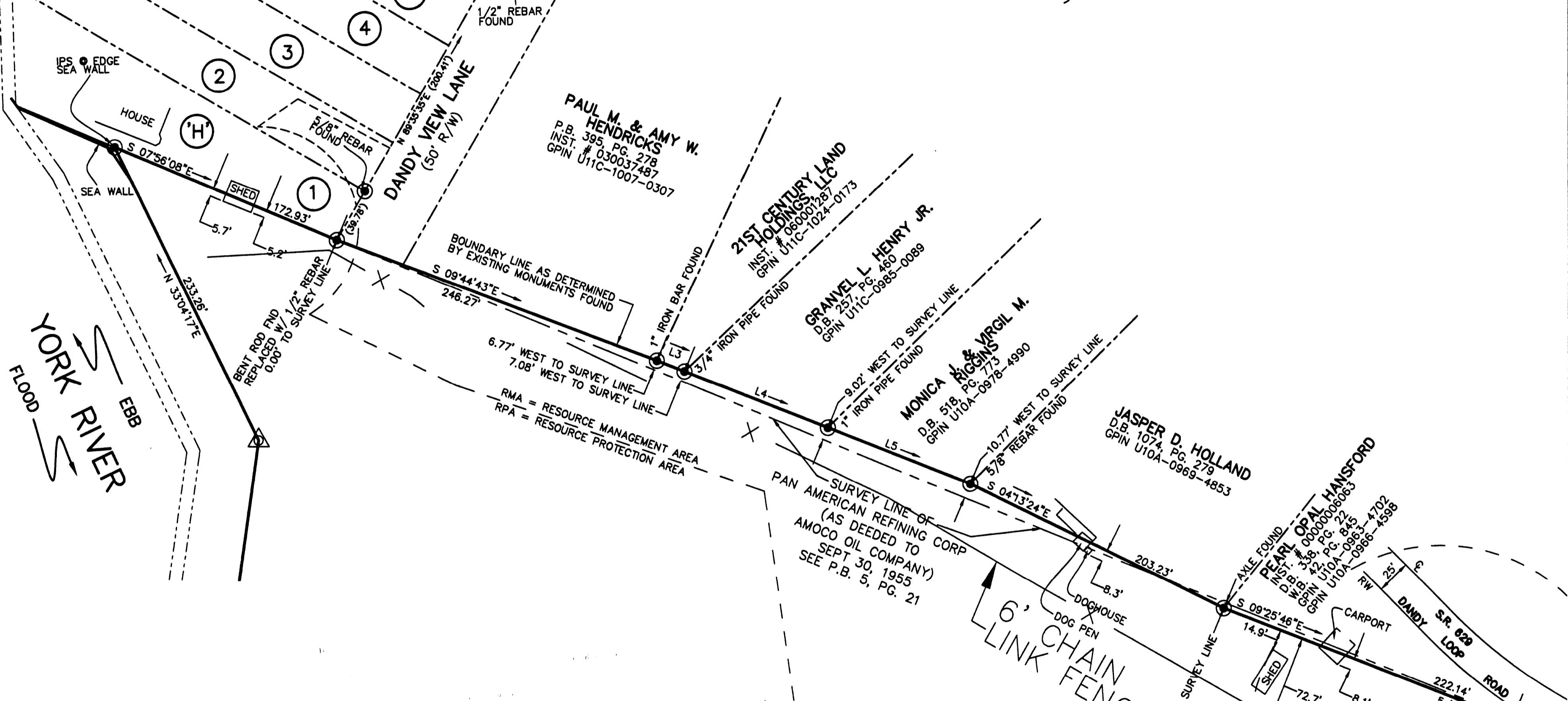


| Course | Bearing | Distance |
|--------|---------------|----------|
| L3 | S 09°00'49" E | 21.39' |
| L4 | S 09°10'33" E | 110.75' |
| L5 | S 09°05'01" E | 110.07' |

ADJACENT PARCEL INFORMATION
 WILLIAM D. SHIELDS
 D.B. 949, PG. 194
 P.B. 1, PG. 351
 GPIN U11C-0824-0594



DANDY VIEW SUBDIVISION
 P.B. 1 PG. 351

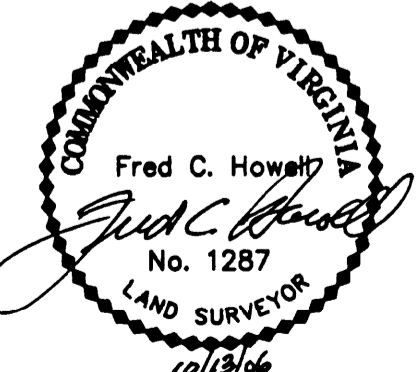
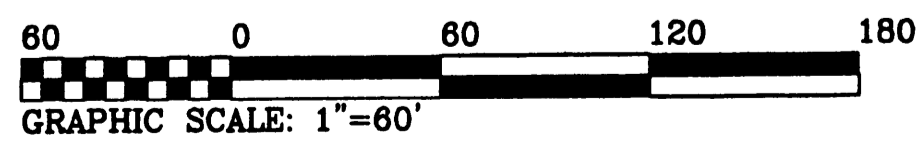


AMOCO OIL COMPANY
 D.B. 94, PG. 251
 GPIN U10A-0280-4246
 (PARCEL B)
 SEE SHEET 1 OF 2

LEGEND

- BOUNDARY LINE
- RIGHT OF WAY LINE
- PROPERTY LINE
- 6' CHAIN LINK FENCE
- RESOURCE PROTECTION AREA
- RESOURCE MANAGEMENT AREA
- SHORELINE
- INTERIOR PROPERTY LINE
- PROPERTY CORNER (MONUMENTED)
- PROPERTY CORNER (NO MONUMENT)
- PARCEL/LOT NUMBER

YORK COUNTY
 APPROVED AS TO CONFORMANCE WITH
 EXISTING GIS DATA
 BY: Carl A. Bryant *CAB*
 TITLE: Computer Support Services
 DATE: 11-14-06



GEO SERVICES
 GEODETIC SERVICES, INC.
 321 Cleveland Place
 Virginia Beach, VA 23462
 (757) 499-7985

DATE: 3/13/06
 SCALE: 1"=60'

REVISIONS:
 03/17/06 ADD SURVEY LINE
 PAN AMERICA REFINING CORP
 10/31/06 ADD FENCE

AMOCO OIL COMPANY
BOUNDARY SURVEY

GRAFTON DISTRICT
 YORK COUNTY, VIRGINIA

DOCUMENT NO.
 10473
 SHEET
 2 OF 2