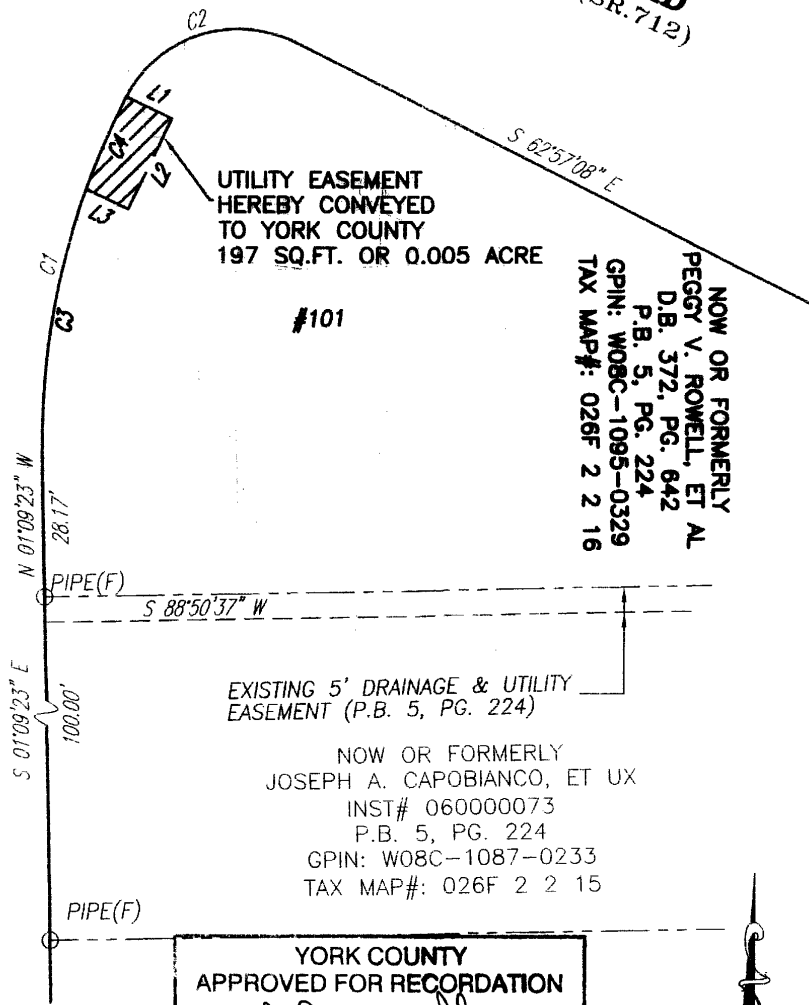


LINE TABLE

LINE	BEARING	DISTANCE
L1	S 64°31'53" E	10.00'
L2	S 25°28'07" W	20.00'
L3	N 64°31'53" W	9.22'

YORK POINT ROAD
(Variable Width R/W)(SR.712)

CHISMAN CIRCLE
(40' R/W)(SR.794)



UTILITY EASEMENT
HEREBY CONVEYED
TO YORK COUNTY
197 SQ.FT. OR 0.005 ACRE

NOW OR FORMERLY
PEGGY V. ROWELL, ET AL
D.B. 372, PG. 642
P.B. 5, PG. 224
GPIN: W08C-1095-0329
TAX MAP#: 026F 2 2 16

EXISTING 5' DRAINAGE & UTILITY
EASEMENT (P.B. 5, PG. 224)

NOW OR FORMERLY
JOSEPH A. CAPOBIANCO, ET UX
INST# 060000073
P.B. 5, PG. 224
GPIN: W08C-1087-0233
TAX MAP#: 026F 2 2 15

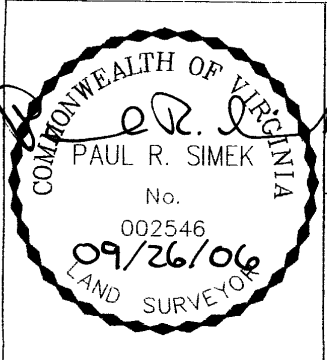
YORK COUNTY
APPROVED FOR RECORDATION
BY: *J.B. Smith*
CHIEF OF DEVELOPMENT & COMPLIANCE
Right-of-Way Agent
DATE: Dec. 5, 2006

CURVE TABLE

CURVE	RADIUS	DELTA ANGLE	ARC LENGTH	CHORD LENGTH	CHORD BEARING
C1	150.00'	28°12'19"	73.84'	73.10'	N 12°56'47" E
C2	25.00'	89°59'55"	39.27'	35.35'	N 72°02'54" E
C3	150.00'	20°33'16"	53.81'	53.52'	N 09°07'15" E
C4	150.00'	07°39'04"	20.03'	20.02'	N 23°13'25" E

NOTES:

1. THIS PLAT IS INTENDED FOR A DESCRIPTION OF UTILITY EASEMENT ONLY, AND DOES NOT CONSTITUTE A BOUNDARY SURVEY.
2. THIS SURVEY WAS PERFORMED WITHOUT THE BENEFIT OF A TITLE REPORT, AND MAY NOT REFLECT ALL EASEMENTS OR RESTRICTIONS THAT MAY AFFECT THE PROPERTY.



REFERENCES:
D.B. 372, PG. 642
P.B. 5, PG. 224

PLAT OF UTILITY EASEMENT ACQUISITION
FROM: PEGGY V. ROWELL, ET AL
TO: COUNTY OF YORK, VIRGINIA
PROJECT: YORK POINT SEWER PROJECT

DATE: 9/26/06 SCALE: 1" = 30'

MERIDIAN IS BASED ON:
VIRGINIA STATE PLANE COORDINATE SYSTEM, SOUTH ZONE, NAD 83 U.S. SURVEY FEET

PRECISION MEASUREMENTS, INC.
SURVEYORS • GPS • 3-D SCANNING • MAPPERS
813 DILIGENCE DRIVE, SUITE 119
NEWPORT NEWS, VIRGINIA 23606
(757) 595-7570