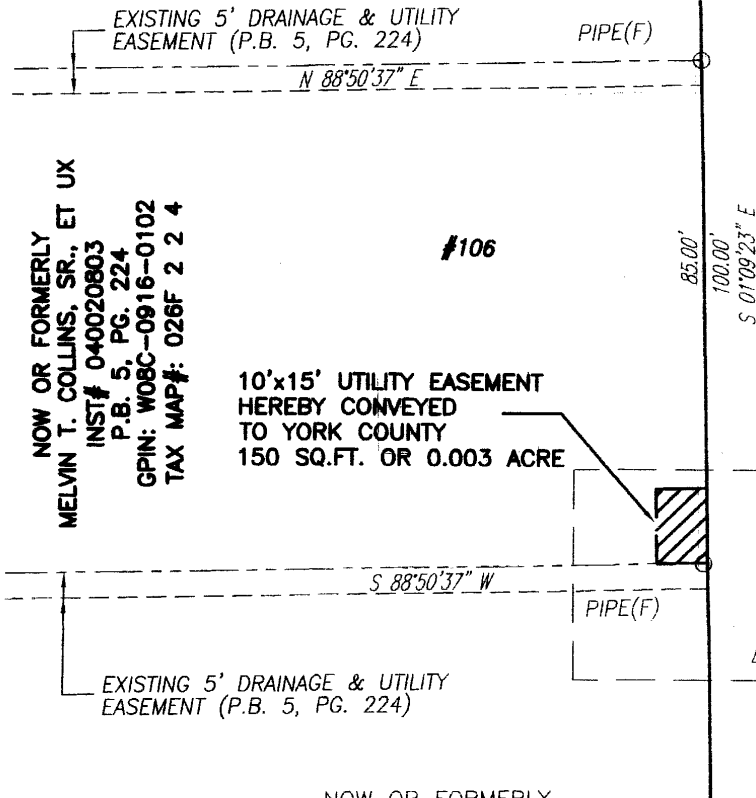


NOW OR FORMERLY
DONALD B. WHITMAN, ET UX
D.B. 289, PG. 240
P.B. 5, PG. 224
GPIN: W08C-0914-0204
TAX MAP#: 026F 2 2 3



NOW OR FORMERLY
MELVIN T. COLLINS, SR., ET UX
INST# 040020803
P.B. 5, PG. 224
GPIN: W08C-0916-0102
TAX MAP#: 026F 2 2 4

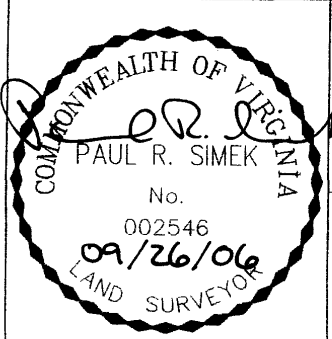
#106
10'x15' UTILITY EASEMENT
HEREBY CONVEYED
TO YORK COUNTY
150 SQ.FT. OR 0.003 ACRE

NOW OR FORMERLY
WILLIAM BARRY KERN, SR., ET UX
D.B. 1051, PG. 686
P.B. 5, PG. 224
GPIN: W08C-0917-0001
TAX MAP#: 026F 2 2 5

YORK COUNTY
APPROVED FOR RECORDATION
BY: *J.B. [Signature]*
RIGHT-OF-WAY AGENT
DATE: Dec. 27, 2006

NOTES:

1. THIS PLAT IS INTENDED FOR A DESCRIPTION OF UTILITY EASEMENT ONLY, AND DOES NOT CONSTITUTE A BOUNDARY SURVEY.
2. THIS SURVEY WAS PERFORMED WITHOUT THE BENEFIT OF A TITLE REPORT, AND MAY NOT REFLECT ALL EASEMENTS OR RESTRICTIONS THAT MAY AFFECT THE PROPERTY.



REFERENCES:
INST# 040020803
P.B. 5, PG. 224

PLAT OF UTILITY EASEMENT ACQUISITION
FROM: MELVIN T. COLLINS, SR., ET UX
TO: COUNTY OF YORK, VIRGINIA
PROJECT: YORK POINT SEWER PROJECT

DATE: 9/26/06

SCALE: 1" = 30'

MERIDIAN IS BASED ON:
VIRGINIA STATE PLANE COORDINATE SYSTEM, SOUTH ZONE, NAD 83 U.S. SURVEY FEET

PRECISION MEASUREMENTS, INC.
SURVEYORS • GPS • 3-D SCANNING • MAPPERS
813 DILIGENCE DRIVE, SUITE 119
NEWPORT NEWS, VIRGINIA 23606
(757) 595-7570