

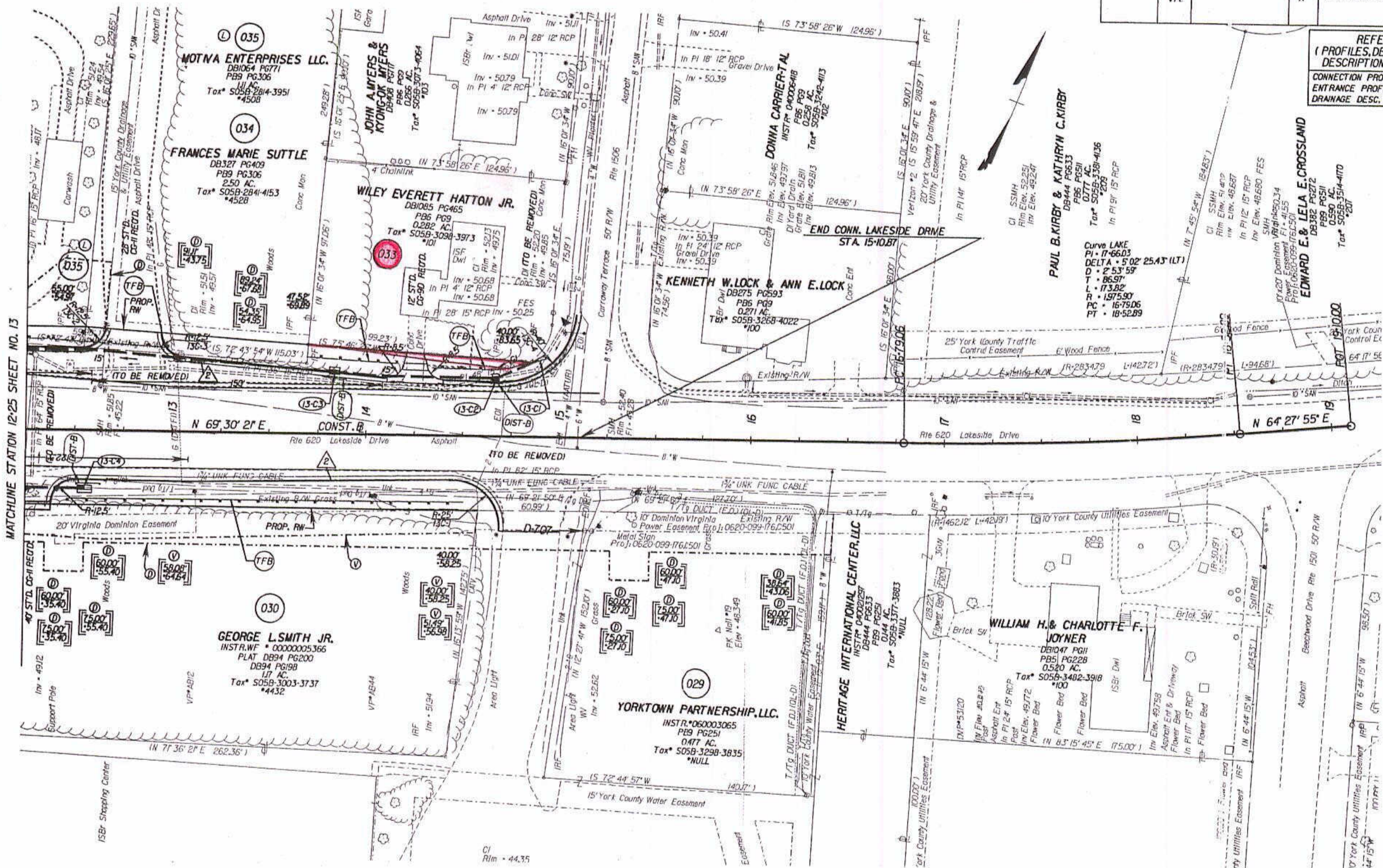
SUPERVISED BY: P.H. BYRUM (757) 925-2557  
 DESIGNED BY: J.M. WINSTEAD (757) 925-2556  
 HAMPTON ROADS DISTRICT DESIGN UNIT

DESIGN FEATURES RELATING TO CONSTRUCTION OR TO REGULATION AND CONTROL OF TRAFFIC MAY BE SUBJECT TO CHANGE AS DEEMED NECESSARY BY THE DEPARTMENT

REVISED	STATE	FEDERAL AID PROJECT	ROUTE	STATE PROJECT	SHEET NO.
06/08/06 07/25/06	VA		17	6017-099-129, RW-201, C-501	13C

THESE PLANS ARE UNFINISHED AND ARE NOT TO BE USED FOR ANY TYPE OF CONSTRUCTION.

REFERENCES (PROFILES, DETAIL & DRAINAGE DESCRIPTION SHEETS, ETC.)	
CONNECTION PROFILES	13D
ENTRANCE PROFILES	24J
DRAINAGE DESC.	2H11 - 2H71



MATCHLINE STATION 12+25 SHEET NO. 13

NOTE: SEE GENERAL NOTES FOR E&S LEGEND  
 ○ DENOTES DRAINAGE STRUCTURE NUMBER  
 V Denotes variable easement required for Verizon Virginia  
 D Denotes variable easement required for Dominion Virginia Power  
 C Denotes Construction Limits In Cuts  
 E Denotes Construction Limits In Fills

State Highway 9  
 Plat Book No. 9  
 Page 309  
 INSTR# 070000 759



PLAN NO.	PROJECT	FILE NO.	SHEET NO.
	6017-099-129		13C

8/1/2006 13:43Z