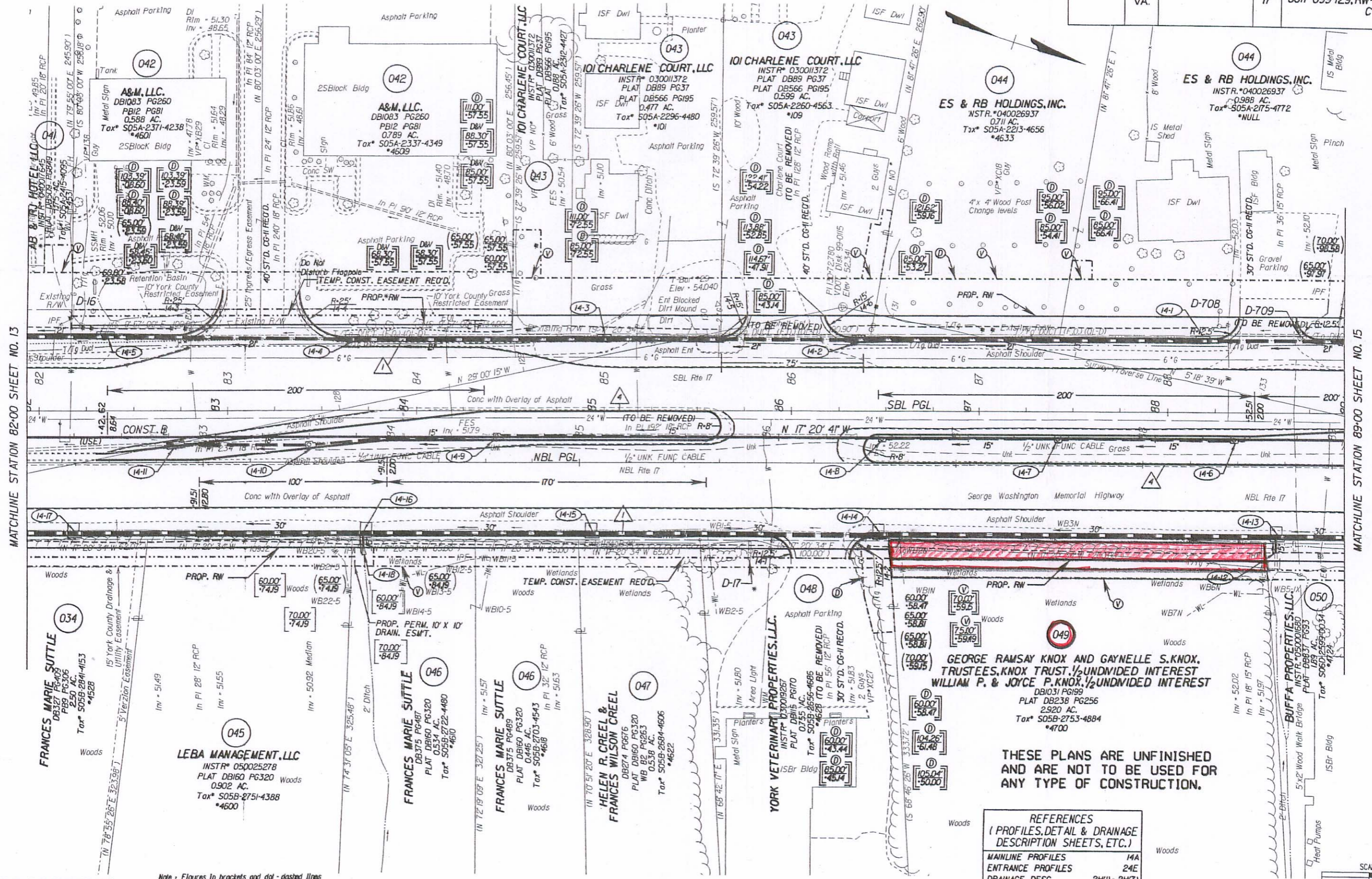


SURVEYED BY: B.B. HARMON (757) 253-5137  
 SUPERVISED BY: R.H. BYRUM (757) 925-2557  
 DESIGNED BY: J.D. WINSTEAD (757) 925-2556  
 HAMPTON ROADS DISTRICT DESIGN UNIT

Instr# 070003515 State Highway 10 Plat Book No. 10 Page 2

DESIGN FEATURES RELATING TO CONSTRUCTION OR TO REGULATION AND CONTROL OF TRAFFIC MAY BE SUBJECT TO CHANGE AS DEEMED NECESSARY BY THE DEPARTMENT

REVISION	STATE	FEDERAL AID PROJECT	ROUTE	STATE PROJECT	SHEET NO.
12/09/05 02/06/06	VA.		17	6017-099-129, RW-201, C-501	14



MATCHLINE STATION 82+00 SHEET NO. 13

MATCHLINE STATION 89+00 SHEET NO. 15

THESE PLANS ARE UNFINISHED AND ARE NOT TO BE USED FOR ANY TYPE OF CONSTRUCTION.

REFERENCES (PROFILES, DETAIL & DRAINAGE DESCRIPTION SHEETS, ETC.)	
MAINLINE PROFILES	14A
ENTRANCE PROFILES	24E
DRAINAGE DESC.	2H(1) - 2H(7)
CROSS-OVER DETAIL	2E

NOTE: PGL DENOTES PROFILE GRADE LINE  
 NOTE: SEE GENERAL NOTES FOR E&S LEGEND  
 ○ DENOTES DRAINAGE STRUCTURE NUMBER

Note: Figures in brackets and dot-dashed lines denote Permanent Easements.  
 Note: Figures in parenthesis and dot-dashed lines denote Temporary Easements.  
 [C] Denotes Construction Limits In Cuts  
 [F] Denotes Construction Limits In Fills

▲ ST'D. CG-7 REQ'D.  
 ▲ ST'D. MS-2 REQ'D.

PLAN NO.	PROJECT	FILE NO.	SHEET NO.
	6017-099-129		14

