

SURVEYED BY: BOB HARRON (757) 253-5037
 SUPERVISED BY: P.H. BYNUM (757) 925-2557
 DESIGNED BY: J.L. WINSTEAD (757) 925-2556
 HAMPTON ROADS DISTRICT DESIGN UNIT

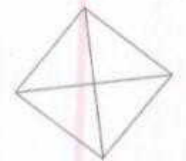
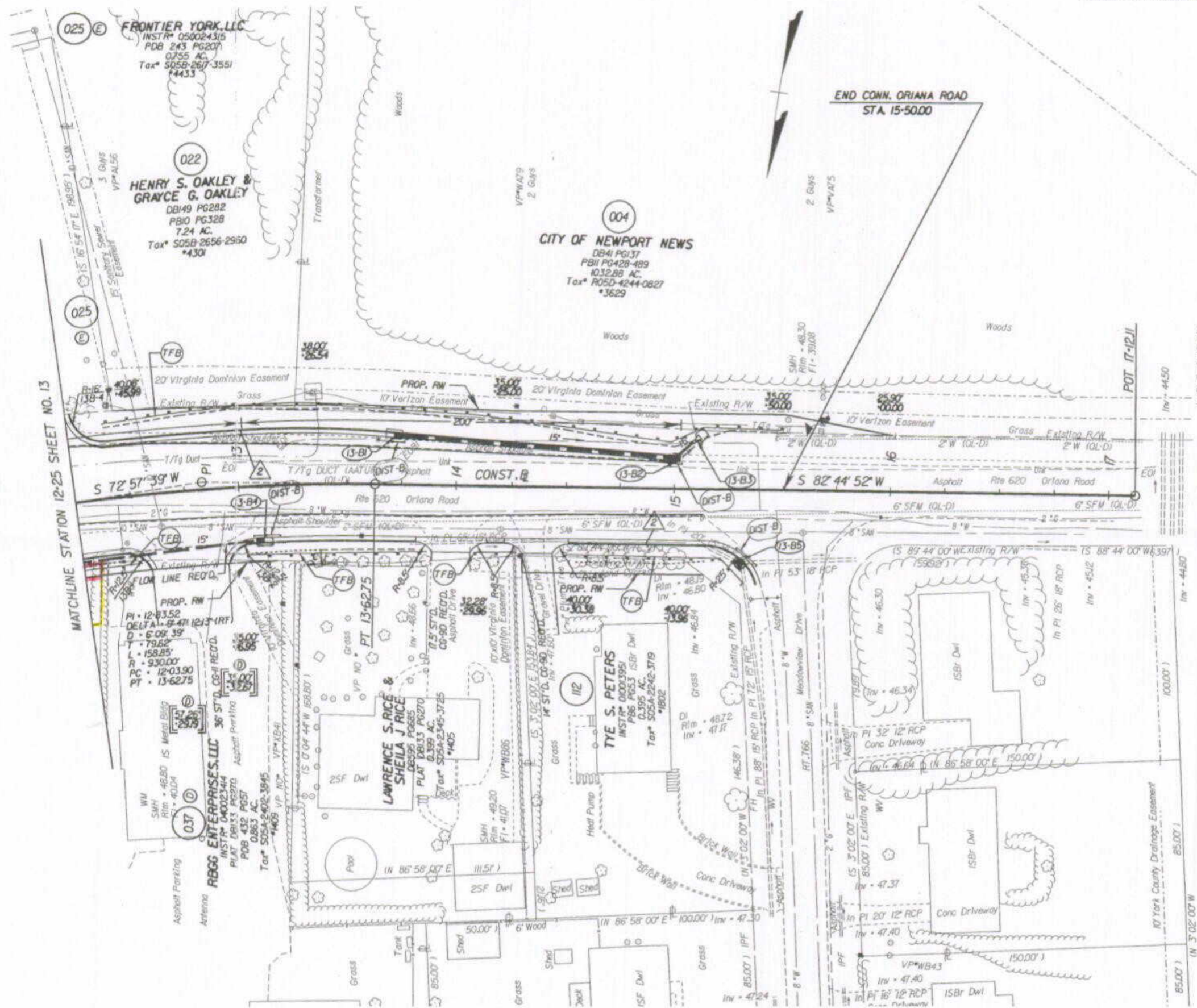
PAGE 1

DESIGN FEATURES RELATING TO CONSTRUCTION OR TO REGULATION AND CONTROL OF TRAFFIC MAY BE SUBJECT TO CHANGE AS DEEMED NECESSARY BY THE DEPARTMENT

REVISION	STATE	FEDERAL AID PROJECT	ROUTE	STATE PROJECT	SHEET NO.
	VA.		17	6017-099-129, RW-201, C-501	13B

REFERENCES
 (PROFILES, DETAIL & DRAINAGE DESCRIPTION SHEETS, ETC.)

CONNECTION PROFILES	130
ENTRANCE PROFILES	241
DRAINAGE DESC.	2H11 - 2H17



State Hwy Plat Book No. 10 Page 42
 INSTR # 07000 5811

THESE PLANS ARE UNFINISHED AND ARE NOT TO BE USED FOR ANY TYPE OF CONSTRUCTION.



NOTE: SEE GENERAL NOTES FOR E&S LEGEND

Note: Figures in brackets and dot-dashed lines denote Permanent Easements.

Ⓢ Denotes Construction Limits In Cuts

Ⓣ Denotes Construction Limits In Fills

⚠ ST'D. CG-6 REGRD.

○ DENOTES DRAINAGE STRUCTURE NUMBER

Ⓢ Denotes variable easement required for Dominion Virginia Power

PLAN NO.	PROJECT	FILE NO.	SHEET NO.
	6017-099-129		13B