

SURVEYED BY: BOB HANSON (757) 253-5137
 SUPERVISED BY: P.H. BYRUM (757) 925-2557
 DESIGNED BY: M.D. WINSTEAD (757) 925-2556
 HAMPTON ROADS DISTRICT DESIGN UNIT

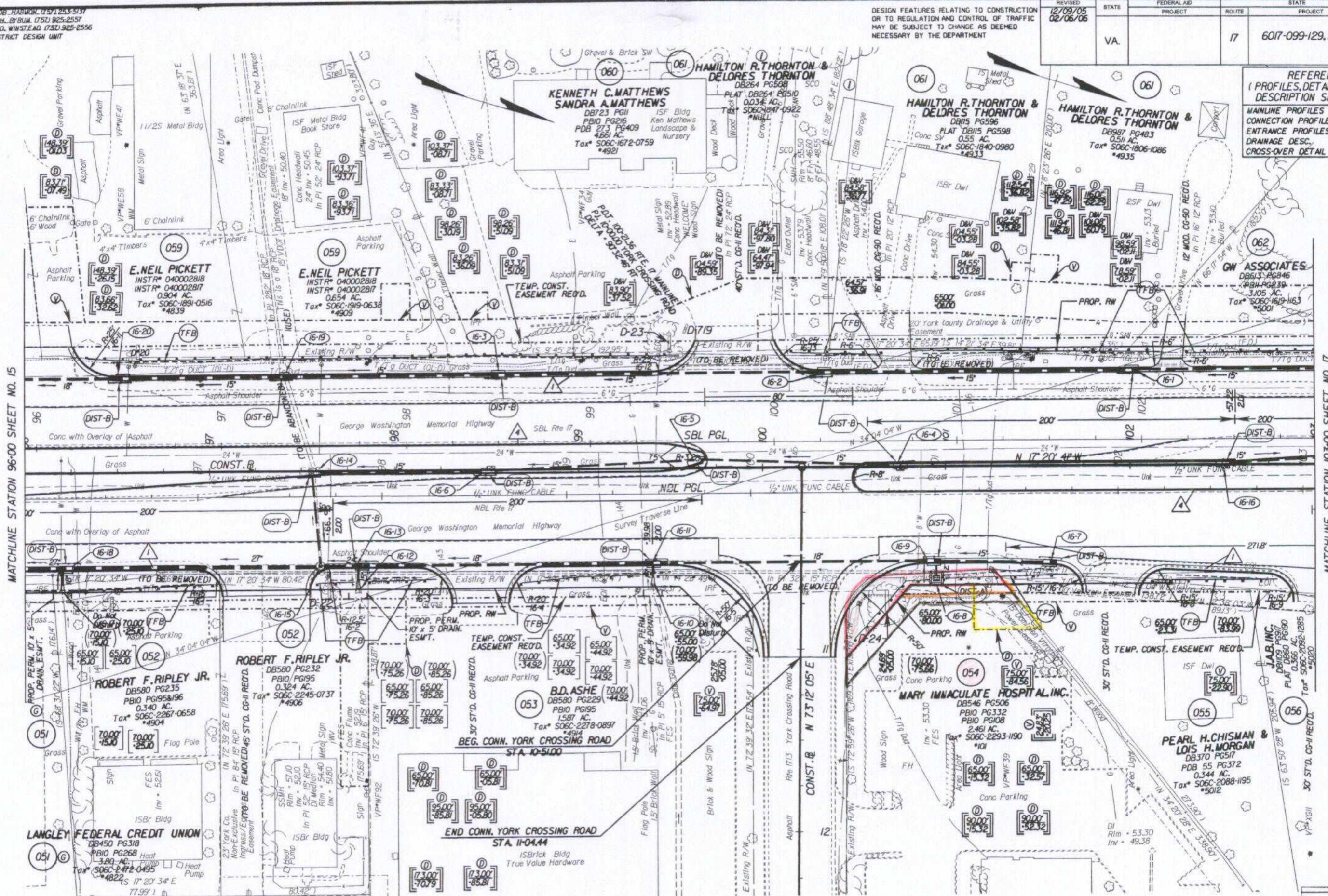
DESIGN FEATURES RELATING TO CONSTRUCTION OR TO REGULATION AND CONTROL OF TRAFFIC MAY BE SUBJECT TO CHANGE AS DEEMED NECESSARY BY THE DEPARTMENT

REVISION	DATE	STATE	FEDERAL AID PROJECT	ROUTE	PROJECT	SHEET NO.
12/09/05	02/06/06	VA.		17	6017-099-129, RW-201, C-501	16

REFERENCES
 (PROFILES, DETAIL & DRAINAGE DESCRIPTION SHEETS, ETC.)

MAINLINE PROFILES	16A
CONNECTION PROFILES	16B
ENTRANCE PROFILES	24F
DRAINAGE DESC.	2(H) - 2(H7)
CROSS-OVER DETAIL	2E

THESE PLANS ARE UNFINISHED AND ARE NOT TO BE USED FOR ANY TYPE OF CONSTRUCTION.



MATCHLINE STATION 96+00 SHEET NO. 15

MATCHLINE STATION 103+00 SHEET NO. 17

NOTE: PGL DENOTES PROFILE GRADE LINE
 NOTE: SEE GENERAL NOTES FOR E&S LEGEND
 DENOTES DRAINAGE STRUCTURE NUMBER

Note: Figures in brackets and dot-dashed lines denote Permanent Easements.
 V Denotes variable easement required for Verizon Virginia
 D Denotes variable easement required for Dominion Virginia Power
 Note: Figures in parenthesis and dot-dashed lines denote Temporary Easements.

C Denotes Construction Limits in Cuts
 F Denotes Construction Limits in Fills
 I ST'D. CG-7 REO'D.
 A ST'D. MS-2 REO'D.



PLAN NO.	PROJECT	FILE NO.	SHEET NO.
	6017-099-129		16

State Highway Plat Book No. 10 Page 49 doc # 070006877