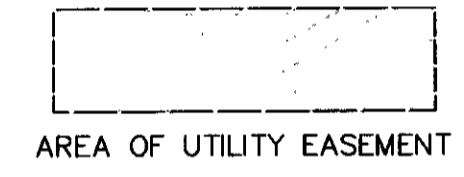
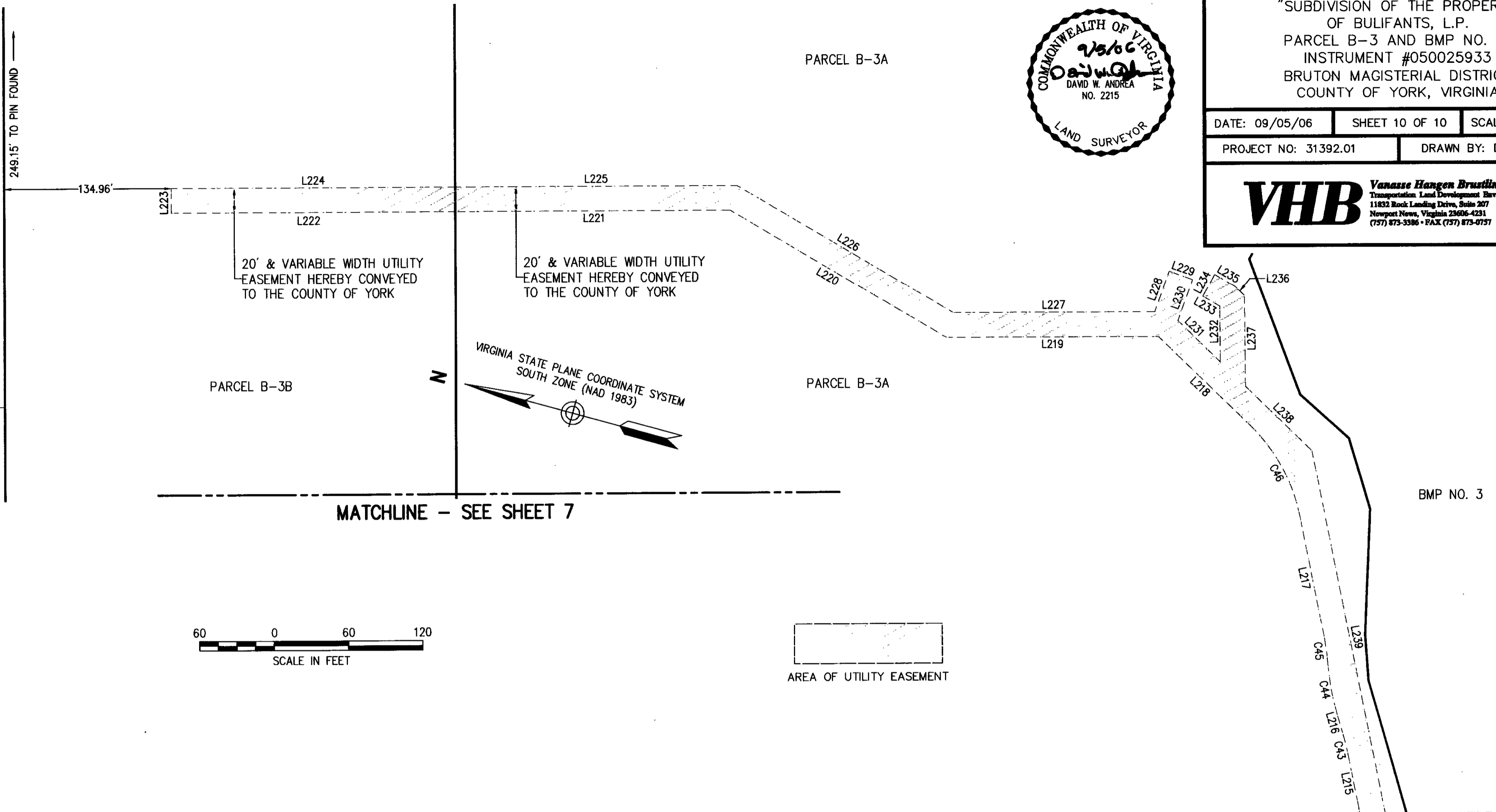


PLAT OF EASEMENTS
 PARCELS B-3A, B-3B, B-3C, B-3D AND B-3E
 "SUBDIVISION OF THE PROPERTY
 OF BULIFANTS, L.P.
 PARCEL B-3 AND BMP NO. 3"
 INSTRUMENT #050025933
 BRUTON MAGISTERIAL DISTRICT
 COUNTY OF YORK, VIRGINIA



DATE: 09/05/06 SHEET 10 OF 10 SCALE: 1"=60'
 PROJECT NO: 31392.01 DRAWN BY: DWP

VHB Vanasse Hangen Brustlin, Inc.
 Transportation Land Development Environmental Services
 11822 Rock Landing Drive, Suite 207
 Newport News, Virginia 23606-4231
 (757) 873-3386 • FAX (757) 873-0757



JUN JUN - 7 AM 9:59

LINE	LENGTH	BEARING
L205	13.05'	N06°32'14"W
L206	32.86'	N71°02'39"E
L207	80.31'	N71°02'39"E
L208	86.82'	N71°02'39"E
L209	40.30'	S83°00'44"E
L210	49.15'	S38°38'54"E
L211	680.22'	S15°30'44"E
L212	70.50'	N74°29'16"E
L213	193.31'	S15°30'44"E
L214	70.43'	N79°59'55"E
L215	44.35'	N63°18'33"E
L216	21.38'	N58°41'52"E
L217	99.86'	N63°17'44"E
L218	103.26'	N28°47'29"E
L219	171.09'	N15°30'44"W
L220	202.81'	N15°10'24"E
L221	221.76'	N15°30'44"W
L222	229.21'	N15°30'44"W

LINE	LENGTH	BEARING
L223	20.00'	N74°29'16"E
L224	229.21'	S15°30'44"E
L225	227.25'	S15°30'44"E
L226	202.81'	S15°10'24"W
L227	162.65'	S15°30'44"E
L228	34.65'	S85°39'20"E
L229	20.00'	S04°20'40"W
L230	35.23'	N85°39'20"W
L231	47.68'	S28°47'29"W
L232	44.85'	N74°02'25"E
L233	15.75'	N14°54'37"E
L234	20.01'	S76°57'36"E
L235	19.16'	S14°54'37"W
L236	10.42'	S29°02'25"W
L237	73.06'	S74°02'25"W
L238	74.74'	S28°47'29"W
L239	307.54'	S63°17'44"W
L240	109.18'	S78°19'35"W

LINE	LENGTH	BEARING
L241	NOT USED	
L242	44.05'	S60°12'14"W
L243	58.18'	N60°12'14"E
L244	2.00'	N15°30'44"W
L245	45.68'	S79°59'55"W
L246	19.50'	N51°10'10"W
L247	161.20'	N16°05'17"W
L248	12.04'	S74°29'16"W
L249	5.00'	N15°30'44"W
L250	10.00'	S74°29'16"W
L251	10.00'	N15°30'44"W
L252	10.00'	N74°29'16"E
L253	218.00'	N15°30'44"W
L254	10.00'	S74°29'16"W
L255	10.00'	N15°30'44"W
L256	10.00'	N74°29'16"E
L257	223.50'	N15°30'44"W
L258	10.00'	S74°29'16"W

LINE	LENGTH	BEARING
L259	10.00'	N15°30'44"W
L260	10.00'	N74°29'16"E
L261	150.01'	N15°30'44"W
L262	10.00'	S74°29'16"W
L263	10.00'	N15°30'44"W
L264	10.00'	N74°29'16"E
L265	63.71'	N15°30'44"W
L266	49.15'	N38°38'54"W
L267	6.27'	N83°00'44"W
L268	19.51'	N83°00'44"W
L269	199.79'	S71°02'39"W
L270	7.43'	N06°32'14"W
L271	48.46'	N74°29'16"E
L272	171.38'	S15°30'44"E
L273	40.18'	S79°59'55"W
L274	11.80'	N51°10'10"W
L275	157.94'	N16°05'17"W

MATCHLINE - SEE SHEET 7

YORK COUNTY
 APPROVED FOR RECORDATION
 BY: *De Maddalena*
 CHIEF OF DEVELOPMENT & COMPLIANCE
 DATE: 6/6/07

State Of Virginia
 County Of York

IN THE CLERK'S OFFICE OF THE CIRCUIT COURT FOR THE COUNTY OF YORK-POQUOSON,
 THE 7th DAY OF June, 2007, THIS MAP WAS PRESENTED AND ADMITTED
 TO RECORD AS THE LAW DIRECTS AS INSTRUMENT NUMBER 1207001504
 9:55am

TESTE: Lynn S Jenkins CLERK
 BY: Quelala M. Chummunil, PC