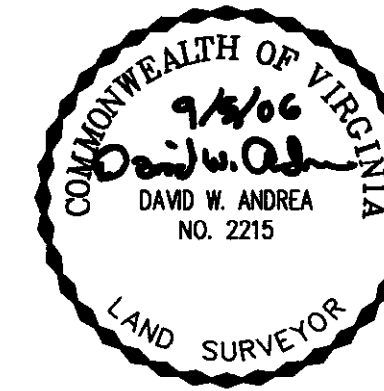
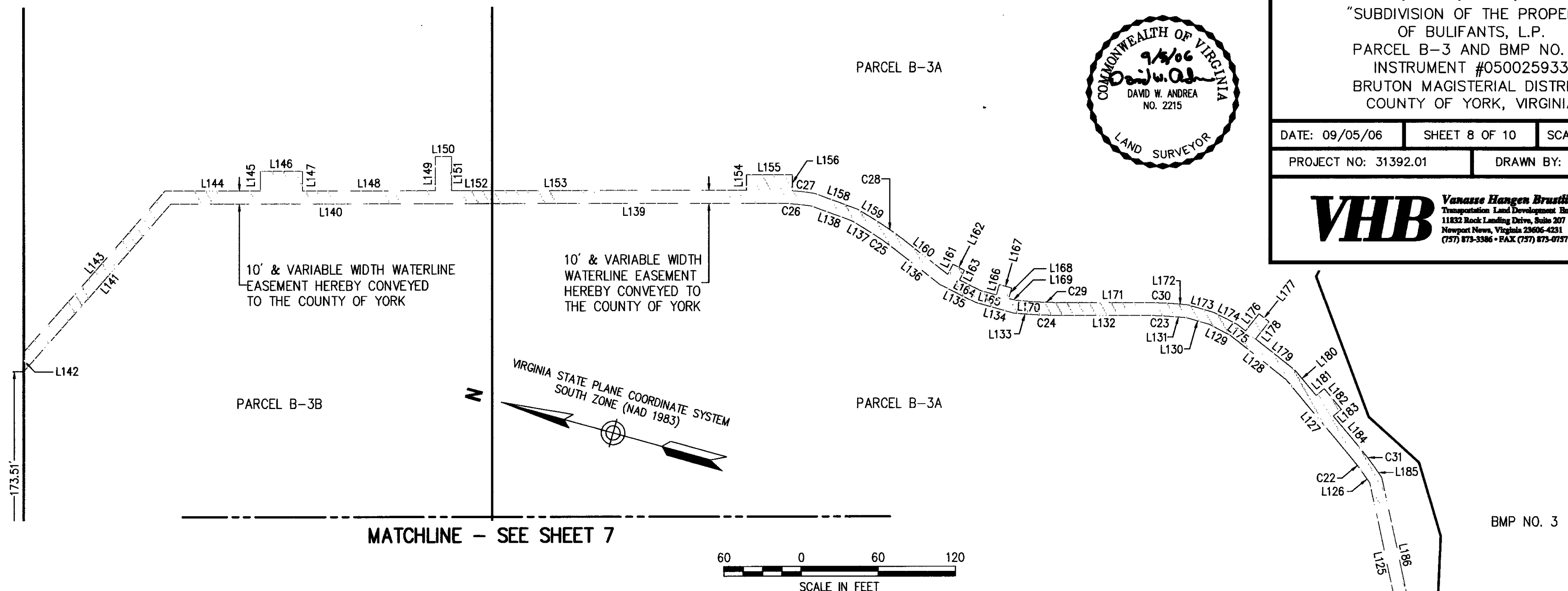


PLAT OF EASEMENTS
 PARCELS B-3A, B-3B, B-3C, B-3D AND B-3E
 "SUBDIVISION OF THE PROPERTY
 OF BULIFANTS, L.P.
 PARCEL B-3 AND BMP NO. 3"
 INSTRUMENT #050025933
 BRUTON MAGISTERIAL DISTRICT
 COUNTY OF YORK, VIRGINIA



DATE: 09/05/06 SHEET 8 OF 10 SCALE: 1"=60'
 PROJECT NO: 31392.01 DRAWN BY: DWP

VHB Vanasse Hangen Brustlin, Inc.
 Transportation Land Development Environmental Services
 11832 Rock Landing Drive, Suite 207
 Newport News, Virginia 23606-4231
 (757) 873-3386 • FAX (757) 873-0737



2007 JUN -7 AM 9:59

BMP NO. 3

MATCHLINE - SEE SHEET 7

MATCHLINE - SEE SHEET 7

LINE	LENGTH	BEARING
L63	235.73'	N74°29'16"E
L64	289.77'	N15°30'44"W
L65	18.01'	S74°29'20"W
L66	8.00'	S15°30'44"E
L67	11.99'	S74°29'20"W
L68	18.00'	N15°30'44"W
L69	30.00'	N74°29'20"E
L70	464.27'	N15°30'44"W
L71	18.00'	S74°29'20"W
L72	8.00'	S15°30'44"E
L73	12.00'	S74°29'20"W
L74	18.00'	N15°30'44"W
L75	30.00'	N74°29'20"E
L76	73.69'	N15°30'44"W
L77	49.15'	N38°38'54"W
L78	15.17'	N19°19'57"W
L79	10.02'	N74°29'16"E
L80	14.50'	S19°19'57"E
L81	49.15'	S38°38'54"E
L82	394.20'	S15°30'44"E
L83	10.00'	N74°29'16"E
L84	10.00'	S15°30'44"E
L85	10.00'	S74°29'16"W
L86	106.50'	S15°30'44"E
L87	176.50'	N74°29'16"E
L88	9.47'	N15°30'44"W
L89	10.00'	N74°29'16"E
L90	9.47'	S15°30'44"E
L91	194.64'	N74°29'16"E
L92	5.50'	N15°30'44"W
L93	9.47'	S74°29'16"W
L94	10.00'	N15°30'44"W
L95	9.47'	N74°29'16"E
L96	269.51'	N15°30'44"W
L97	36.00'	N38°00'44"W
L98	9.47'	S51°59'16"W

LINE	LENGTH	BEARING
L99	10.00'	N38°00'44"W
L100	9.47'	N51°59'16"E
L101	34.99'	N38°00'44"W
L102	3.01'	N38°00'44"W
L103	291.28'	N15°30'44"W
L104	10.51'	S74°29'16"W
L105	10.00'	N15°30'44"W
L106	10.51'	N74°29'16"E
L107	60.11'	N15°30'44"W
L108	10.00'	N74°29'16"E
L109	359.40'	S15°30'44"E
L110	5.16'	S38°00'44"E
L111	78.84'	S38°00'44"E
L112	297.00'	S15°30'44"E
L113	391.14'	S74°29'16"W
L114	255.00'	S15°30'44"E
L115	8.50'	N74°29'16"E
L116	10.00'	S15°30'44"E
L117	8.50'	S74°29'16"W
L118	84.96'	S15°30'44"E
L119	6.93'	S60°30'44"E
L120	14.40'	S83°00'44"E
L121	8.58'	N82°14'57"E
L122	23.71'	N74°29'16"E
L123	70.39'	N58°41'52"E
L124	18.21'	N70°38'26"E
L125	119.01'	N62°19'11"E
L126	7.52'	N39°49'11"E
L127	77.49'	N34°23'27"E
L128	55.37'	N23°08'27"E
L129	18.41'	N11°53'27"E
L130	19.02'	N00°38'27"E
L131	11.39'	N10°36'33"W
L132	73.43'	N15°30'35"W
L133	17.33'	N11°04'57"W
L134	30.74'	N00°10'03"E

LINE	LENGTH	BEARING
L135	31.55'	N11°25'03"E
L136	44.61'	N22°40'03"E
L137	16.70'	N15°47'56"E
L138	33.73'	N04°32'56"E
L139	219.51'	N15°30'44"W
L140	249.98'	N15°30'44"W
L141	173.13'	N64°14'51"W
L142	15.16'	N74°29'16"E
L143	166.26'	S64°14'51"E
L144	74.34'	S15°30'44"E
L145	15.15'	N74°29'16"E
L146	32.51'	S15°30'44"E
L147	15.15'	S74°29'16"W
L148	103.43'	S15°30'44"E
L149	26.35'	N74°29'16"E
L150	12.50'	S15°30'44"E
L151	26.35'	S74°29'16"W
L152	31.73'	S15°30'44"E
L153	197.55'	S15°30'44"E
L154	11.92'	N74°29'16"E
L155	35.77'	S15°30'44"E
L156	12.40'	S74°29'16"W
L157	NOT USED	
L158	35.70'	S04°32'56"W
L159	17.69'	S15°47'56"W
L160	44.98'	S22°40'03"W
L161	8.76'	S78°34'57"E
L162	10.00'	S11°25'03"W
L163	8.50'	N78°34'57"W
L164	18.25'	S11°25'03"W
L165	12.86'	S00°10'03"W
L166	8.53'	S89°49'57"E
L167	10.00'	S00°10'03"W
L168	8.53'	N89°49'57"W
L169	5.91'	S00°10'03"W

LINE	LENGTH	BEARING
L170	16.34'	S11°04'57"E
L171	73.43'	S15°30'35"E
L172	12.37'	S10°36'33"E
L173	20.98'	S00°38'27"W
L174	20.38'	S11°53'27"W
L175	7.98'	S23°08'27"W
L176	17.00'	S66°51'33"E
L177	10.00'	S23°08'27"W
L178	17.00'	N66°51'33"W
L179	39.35'	S23°08'27"W
L180	25.41'	S34°23'27"W
L181	8.25'	S55°36'54"E
L182	20.77'	S34°23'06"W
L183	8.25'	N55°36'33"W
L184	32.29'	S34°23'27"W
L185	9.51'	S39°49'11"W
L186	120.99'	S62°19'11"W
L187	18.21'	S70°38'26"W
L188	10.00'	S25°22'36"E
L189	16.17'	S58°41'52"W
L190	10.00'	N31°18'08"W
L191	54.22'	S58°41'52"W
L192	8.44'	S20°33'51"E
L193	18.33'	S69°26'09"W
L194	8.52'	N20°33'51"W
L195	23.71'	S74°29'16"W
L196	8.58'	S82°14'57"W
L197	16.39'	N83°00'44"W
L198	13.07'	N60°30'44"W
L199	17.07'	N15°30'44"W
L200	32.80'	S74°29'16"W
L201	15.55'	S15°30'44"E
L202	11.03'	N15°30'44"W
L203	183.87'	S74°29'16"W
L204	10.21'	N27°09'28"W

AREA OF WATERLINE EASEMENT

YORK COUNTY
 APPROVED FOR RECORDATION
 BY: *[Signature]*
 CHIEF OF DEVELOPMENT & COMPLIANCE
 DATE: 6/6/07

State Of Virginia
 County Of York
 IN THE CLERK'S OFFICE OF THE CIRCUIT COURT FOR THE COUNTY OF YORK-POQUOSON,
 THE 7th DAY OF June, 2007 THIS MAP WAS PRESENTED AND ADMITTED
 TO RECORD AS THE LAW DIRECTS AS INSTRUMENT NUMBER **LE07013046**
 9:55am
 TESTE: *Lynn S Jenkins*
 CLERK
 BY: *Audela M Chirvananand, DC*