

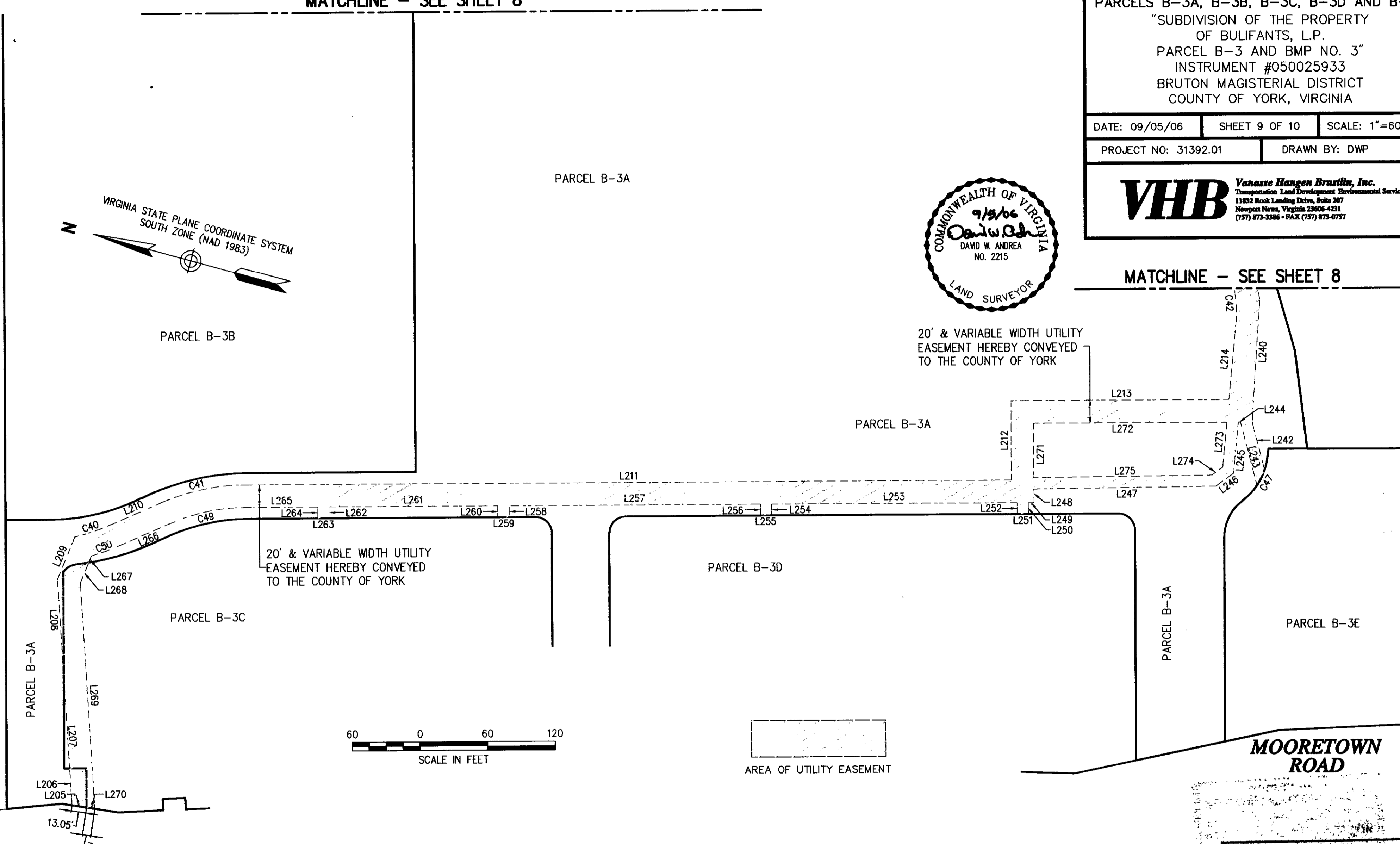
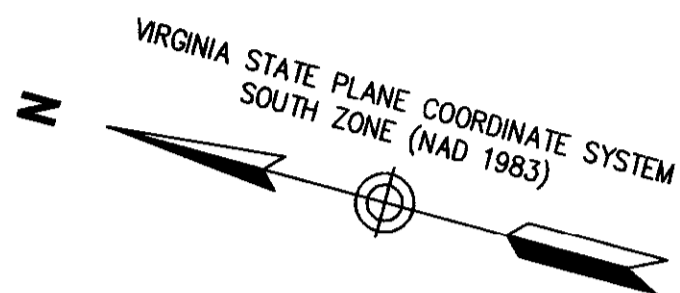
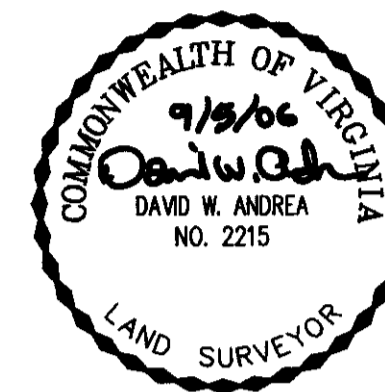
MATCHLINE - SEE SHEET 8

PLAT OF EASEMENTS  
 PARCELS B-3A, B-3B, B-3C, B-3D AND B-3E  
 "SUBDIVISION OF THE PROPERTY  
 OF BULIFANTS, L.P.  
 PARCEL B-3 AND BMP NO. 3"  
 INSTRUMENT #050025933  
 BRUTON MAGISTERIAL DISTRICT  
 COUNTY OF YORK, VIRGINIA

DATE: 09/05/06 SHEET 9 OF 10 SCALE: 1"=60'

PROJECT NO: 31392.01 DRAWN BY: DWP

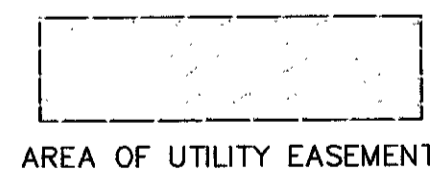
**VHB** Vanasse Hangen Brustlin, Inc.  
 Transportation Land Development Environmental Services  
 11832 Rock Landing Drive, Suite 207  
 Newport News, Virginia 23606-4231  
 (757) 873-3386 • FAX (757) 873-0757



MATCHLINE - SEE SHEET 8

20' & VARIABLE WIDTH UTILITY  
 EASEMENT HEREBY CONVEYED  
 TO THE COUNTY OF YORK

20' & VARIABLE WIDTH UTILITY  
 EASEMENT HEREBY CONVEYED  
 TO THE COUNTY OF YORK



**MOORETOWN  
 ROAD**

**MOORETOWN  
 ROAD**

UTILITY EASEMENT CURVE DATA TABLE						
NUMBER	RADIUS	DELTA	ARC LENGTH	TANGENT	CHORD	CHORD BEARING
C40	200.00'	9°44'15"	33.99'	17.04'	33.95'	S33°46'47"E
C41	190.00'	23°07'51"	76.71'	38.88'	76.19'	N27°04'59"W
C42	140.00'	14°04'23"	34.39'	17.28'	34.30'	N70°20'45"E
C43	140.00'	4°36'41"	11.27'	5.64'	11.26'	N61°00'13"E
C44	210.00'	11°55'17"	43.69'	21.93'	43.61'	S64°39'30"W
C45	140.00'	7°19'24"	17.89'	8.96'	17.88'	N66°57'26"E
C46	140.00'	34°30'15"	84.31'	43.48'	83.04'	N46°02'37"E
C47	55.50'	15°51'10"	15.36'	7.73'	15.31'	S79°00'21"E
C48			NOT USED			
C49	170.00'	23°07'51"	68.63'	34.79'	68.16'	N27°05'00"W
C50	220.00'	7°01'50"	26.99'	13.51'	26.98'	S35°08'00"E
C51			NOT USED			

YORK COUNTY  
 APPROVED FOR RECORDATION  
 BY: *Al Maddalena*  
 CHIEF OF DEVELOPMENT & COMPLIANCE  
 DATE: 6/6/07

**State Of Virginia  
 County Of York**

IN THE CLERK'S OFFICE OF THE CIRCUIT COURT FOR THE COUNTY OF YORK-POQUOSON,  
 THE 14<sup>th</sup> DAY OF June, 2006, THIS MAP WAS PRESENTED AND ADMITTED  
 TO RECORD AS THE LAW DIRECTS AS INSTRUMENT NUMBER LR070012046

TESTE: Lyns S Jenkins  
 CLERK  
 BY: Archie M Chinn...