

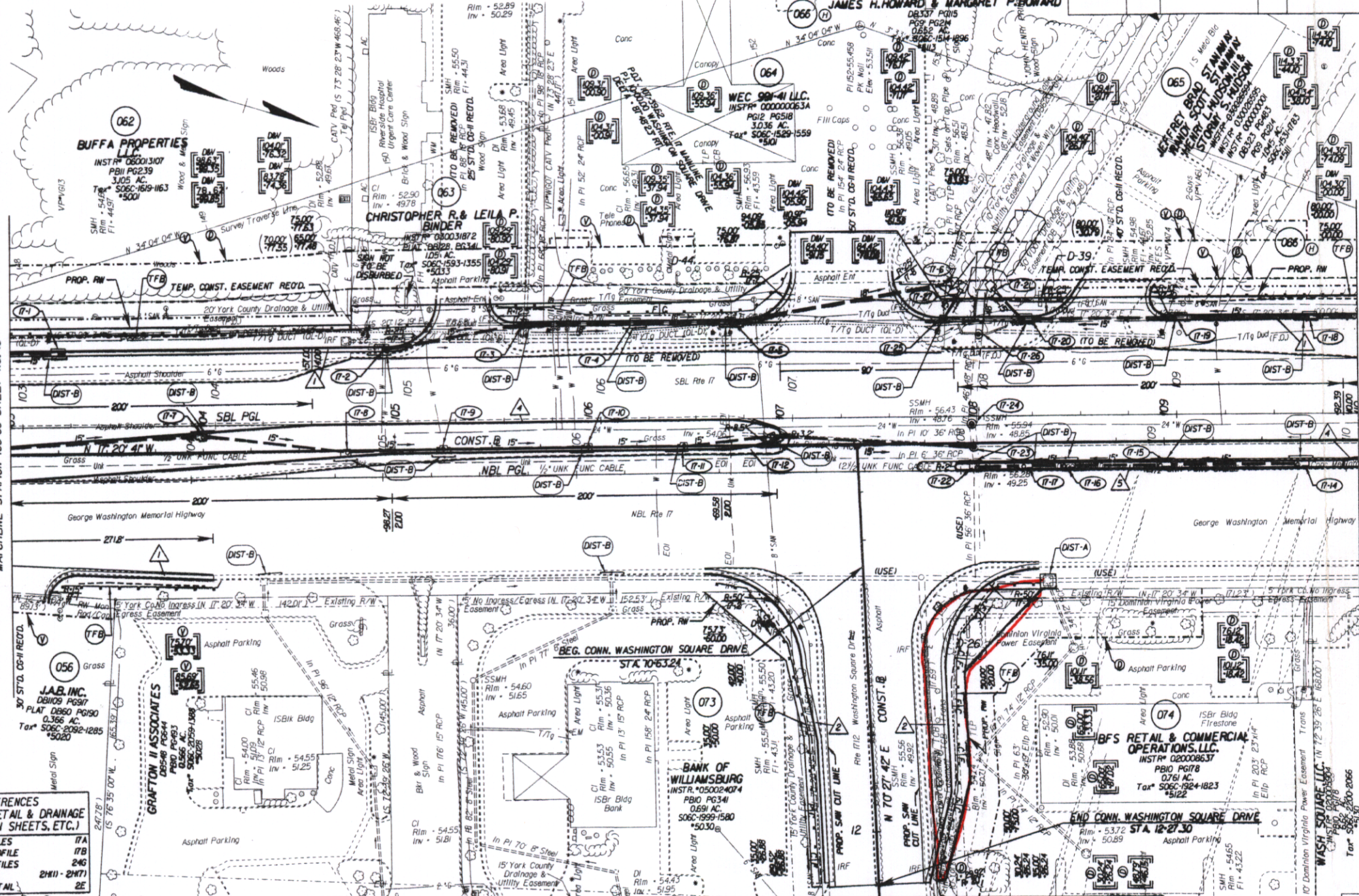
SURVEYED BY: BOB HARRISON, D.B. 1253-517
 SUPERVISED BY: E.A. BYRUM, D.S. 925-2537
 DESIGNED BY: M.D. WINESTEAD, D.S. 925-2536
 HAMPTON ROADS DISTRICT DESIGN UNIT

DESIGN FEATURES RELATING TO CONSTRUCTION OR TO REGULATION AND CONTROL OF TRAFFIC MAY BE SUBJECT TO CHANGE AS DEEMED NECESSARY BY THE DEPARTMENT

REVISED 12/09/05 02/06/06	STATE VA.	FEDERAL AID PROJECT	ROUTE 17	STATE PROJECT 6017-099-129, RW-201, C-501	SHEET NO. 17
---------------------------------	--------------	------------------------	-------------	---	-----------------

THESE PLANS ARE UNFINISHED AND ARE NOT TO BE USED FOR ANY TYPE OF CONSTRUCTION.

MATCHLINE STATION 103+00 SHEET NO. 16



REFERENCES
 (PROFILES, DETAIL & DRAINAGE DESCRIPTION SHEETS, ETC.)

MAINLINE PROFILES	17A
CONNECTION PROFILE	17B
ENTRANCE PROFILES	24G
DRAINAGE DESC.	24H(1) - 24H(7)
CROSS-OVER DETAIL	2E

NOTE: PGL DENOTES PROFILE GRADE LINE
 NOTE: SEE GENERAL NOTES FOR E&S LEGEND

Note: Figures in brackets and dot-dashed lines denote Temporary Easements.
 (V) Denotes variable easement required for Verizon Virginia
 (D) Denotes variable easement required for Dominion Virginia Power

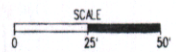
Note: Figures in parenthesis and dot-dashed lines denote Construction Units in Cuts
 (E) Denotes Construction Units in Fills

- (1) ST.D. C6-7 RECD.
- (2) ST.D. C6-6 RECD.
- (3) ST.D. MS-2 RECD.
- (4) ST.D. MS-1A RECD.

MATCHLINE STATION 10+00 SHEET NO. 18

State Hwy
 Plat Book No. L R 070017117
 Page 136
 29 (19) E

02/15/2006



PLAN NO.	PROJECT	FILE NO.	SHEET NO.
	6017-099-129		17