

29-26B

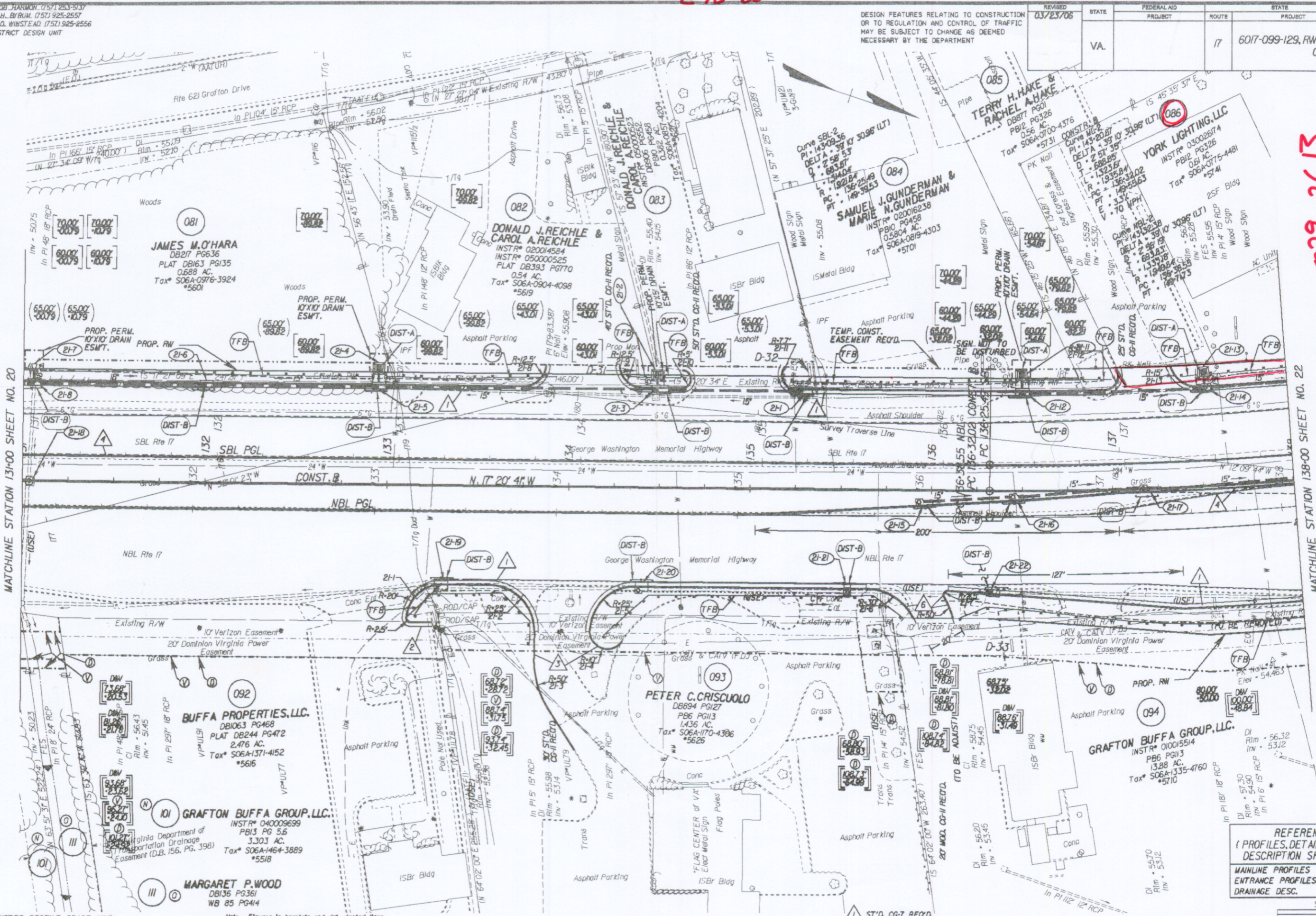
SURVEYED BY: BOB HARRICH (757) 253-5137
SUPERVISED BY: P.J. BYRUM (757) 925-2557
DESIGNED BY: M.D. WINSTEAD (757) 925-2556
HAMPTON ROADS DISTRICT DESIGN UNIT

DESIGN FEATURES RELATING TO CONSTRUCTION OR TO REGULATION AND CONTROL OF TRAFFIC MAY BE SUBJECT TO CHANGE AS DEEMED NECESSARY BY THE DEPARTMENT

REVISED	STATE	FEDERAL AID	ROUTE	STATE	SHEET NO.
03/23/06	VA.		17	6017-099-129, RW-201, C-501	21

029 26B
10-17-07

THESE PLANS ARE UNFINISHED AND ARE NOT TO BE USED FOR ANY TYPE OF CONSTRUCTION.



029 26B
170

State Highway Book No. 10 Page 170
L R070020897.2

MATCHLINE STATION 131+00 SHEET NO. 20

MATCHLINE STATION 138+00 SHEET NO. 22

NOTE: PGL DENOTES PROFILE GRADE LINE
NOTE: SEE GENERAL NOTES FOR E&S LEGEND
○ DENOTES DRAINAGE STRUCTURE NUMBER

Note: Figures in brackets and dot-dashed lines denote Permanent Easements.
Ⓢ Denotes variable easement required for Verizon Virginia
Ⓣ Denotes variable easement required for Dominion Virginia Power

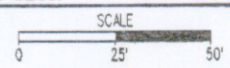
Note: Figures in parenthesis and dot-dot-dashed lines denote Temporary Easements.

--- Denotes Construction Limits in Cuts
--- Denotes Construction Limits in Fills

- 1 ST'D. CG-7 REQ'D.
- 2 ST'D. CG-6 REQ'D.
- 3 ST'D. CG-2 REQ'D.
- 4 ST'D. WS-2 REQ'D.
- 6 ST'D. CG-3 REQ'D.

REFERENCES
(PROFILES, DETAIL & DRAINAGE DESCRIPTION SHEETS, ETC.)

MAINLINE PROFILES	21A
ENTRANCE PROFILES	24H
DRAINAGE DESC.	24(H) - 24(T)



PLAN NO.	PROJECT	FILE NO.	SHEET NO.
	6017-099-129		21