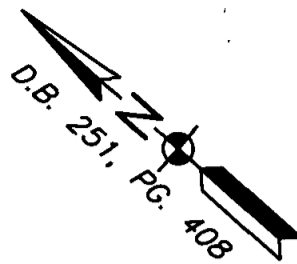
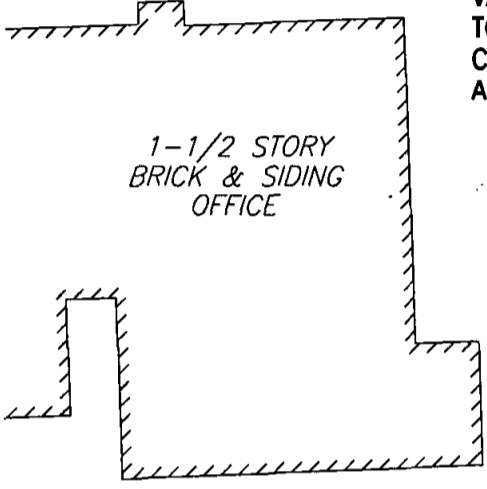


N/F  
 T&S ASSOCIATES, INC.  
 TM# 11-18-00-001  
 GPIN # H14D-3369-1103  
 DB 585, PG 327  
 DB 585, PG 329  
 PB 12, PG 179-180  
 PB 12, PG 644  
 ZONING: IL



S41°32'08"E

R=1517.04'  
 L=45.95'



1-1/2 STORY  
 BRICK & SIDING  
 OFFICE

VARIABLE WIDTH RIGHT-OF-WAY  
 TO BE DEDICATED TO THE  
 COMMONWEALTH OF VIRGINIA  
 AREA=973 SQ.FT.

BCN, INVESTORS, LLC  
 TM# 11-00-00-100  
 GPIN #H14D-3435-0698  
 DB 1080, PG 421  
 PLAT IN DB 251, PG 408  
 DB 1121, PG 954  
 DB 1123, PG 132  
 ZONING: IL

STATE ROUTE NO. 641 PENNINGAN ROAD  
 VARIABLE WIDTH R/W (30' MIN)

N41°23'00"W

N/F  
 WILTSHIRE, INC.  
 TM#11-00-00-0099  
 GPIN # H14D-2607-1450  
 DB 1020, PG 186  
 PB 12, PG 587  
 DB 1121, PG 954  
 DB 1123, PG 132  
 ZONING: IL  
 LOT AREA = 296,036.35 S.F.  
 OR 6.79 AC.

APPROVED BY:  
 COMMONWEALTH OF VIRGINIA  
 DEPARTMENT OF TRANSPORTATION

*Pankaj L. Das, P.E.*  
 NAME (P.K. DAS)

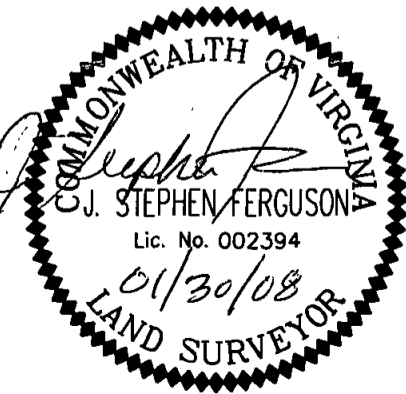
*Project/Staff Engineer*  
 TITLE

*3/28/08*  
 DATE

THIS MAP DOES NOT CONSTITUTE A BOUNDARY  
 SURVEY. BOUNDARY SHOWN HEREON TAKEN  
 FROM DEEDS AND MAPS OF RECORD.

THIS SURVEY PERFORMED WITHOUT THE  
 BENEFIT OF A CURRENT TITLE REPORT AND  
 MAY NOT REFLECT ALL MATTERS AFFECTING  
 TITLE.

EXHIBIT SHOWING  
 VARIABLE WIDTH  
 RIGHT-OF-WAY DEDICATION  
 TO THE  
 COMMONWEALTH OF VIRGINIA  
 LOCATED AT PROPERTY OWNED BY  
 BCN, INVESTORS, LLC  
 BRUTON DISTRICT, YORK COUNTY, VIRGINIA



**HOGGARD / EURE ASSOCIATES, P.C.**  
 Engineers · Surveyors · Planners  
 901 PORTCENTRE PARKWAY, SUITE 5 (757)484-9670  
 Portsmouth, Virginia 23704

SCALE: 1"=20'
DATE: 01/30/08
DRAWN: TRW
REVISED:
RW-DED.dwg
<b>2160.04.05</b>