

SURVEYED BY: BOB JARMON (757) 253-5137
 SUPERVISED BY: P.H. BYRUM (757) 925-2557
 DESIGNED BY: M.D. WINSTEAD (757) 925-2556
 HAMPTON ROADS DISTRICT DESIGN UNIT

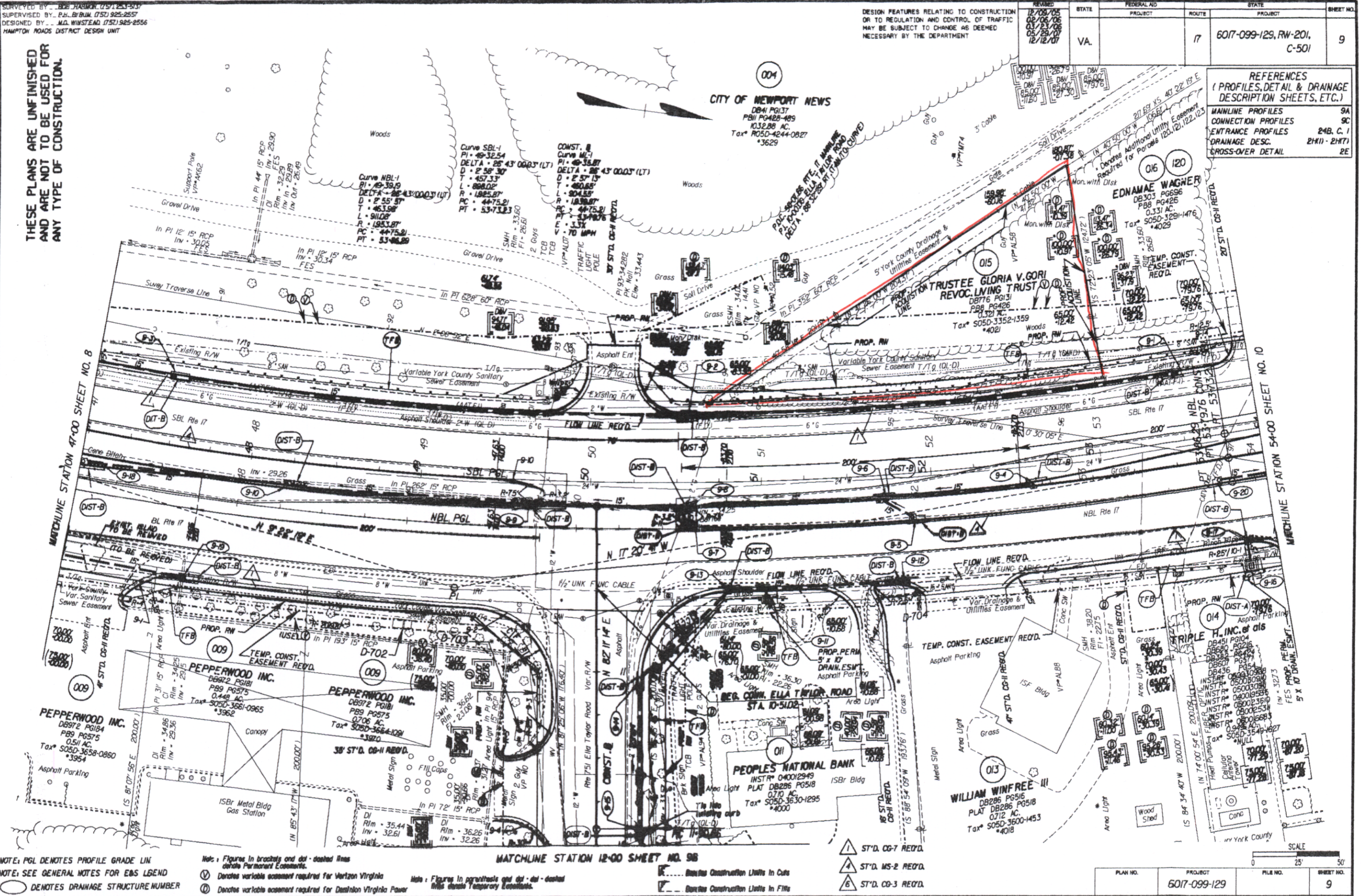
DESIGN FEATURES RELATING TO CONSTRUCTION OR TO REGULATION AND CONTROL OF TRAFFIC MAY BE SUBJECT TO CHANGE AS DEEMED NECESSARY BY THE DEPARTMENT

STATE	FEDERAL AID PROJECT	ROUTE	STATE PROJECT	SHEET NO.
VA.		17	6017-099-129, RW-201, C-501	9

THESE PLANS ARE UNFINISHED AND ARE NOT TO BE USED FOR ANY TYPE OF CONSTRUCTION.

REFERENCES
(PROFILES, DETAIL & DRAINAGE DESCRIPTION SHEETS, ETC.)

MAINLINE PROFILES	9A
CONNECTION PROFILES	9C
ENTRANCE PROFILES	24B, C, I
DRAINAGE DESC.	21H1 - 21H7
CROSS-OVER DETAIL	2E



NOTE: PGL DENOTES PROFILE GRADE LINE
 NOTE: SEE GENERAL NOTES FOR E&S LEGEND
 DENOTES DRAINAGE STRUCTURE NUMBER

Notes: Figures in brackets and dot - dashed lines denote Permanent Easements.
 V Denotes variable easement required for Verizon Virginia
 D Denotes variable easement required for Dominion Virginia Power

Notes: Figures in parenthesis and dot - dashed lines denote Temporary Easements.
 [] Denotes Construction Units in Cuts
 [] Denotes Construction Units in Fills

MATCHLINE STATION 12+00 SHEET NO. 98

- ▲ ST'D. CO-7 RECD.
- ▲ ST'D. MS-2 RECD.
- ▲ ST'D. CO-3 RECD.

SCALE 0 25' 50'

PLAN NO.	PROJECT	FILE NO.	SHEET NO.
	6017-099-129		9

State Hwy Plat Book # 10 P. 241
 Doc Instr # 080023154