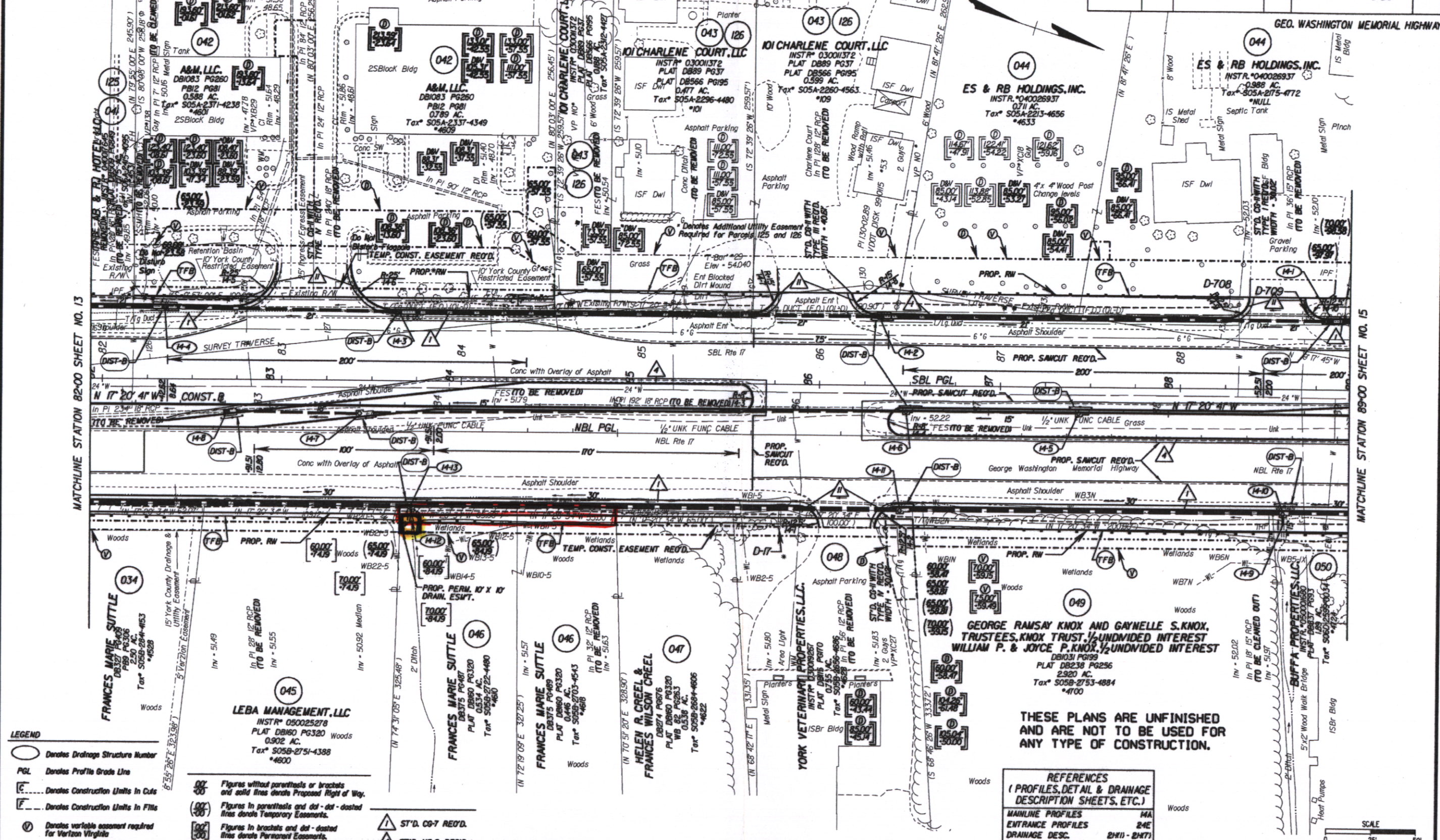


SURVEYED BY: BOB HARRIS (1/1/2007)
SUPERVISED BY: J. K. HARRIS, P.E. (1/1/2007)
DESIGNED BY: K. A. MCKINNA, P.E. (1/1/2007)
HAMPTON ROADS DISTRICT DESIGN UNIT

UTILITY OWNERS:
SEE SHEET 3 FOR DETAILS.



- LEGEND**
- Denotes Drainage Structure Number
 - PGL Denotes Profile Grade Line
 - Denotes Construction Limits in Cuts
 - Denotes Construction Limits in Fills
 - ⊕ Denotes variable easement required for Verizon Virginia
 - ⊕ Denotes variable easement required for Dominion Virginia Power

- 00/00 Figures without parenthesis or brackets and solid lines denote Proposed Right of Way.
- (00/00) Figures in parenthesis and dot-dot-dashed lines denote Temporary Easements.
- 00/00 Figures in brackets and dot-dashed lines denote Permanent Easements.
- 00/00 Figures in double brackets and dot-dashed lines denote Permanent Utility Easements.

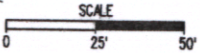
NOTES
See General Notes for EBS Legend

THESE PLANS ARE UNFINISHED AND ARE NOT TO BE USED FOR ANY TYPE OF CONSTRUCTION.

REFERENCES
(PROFILES, DETAIL & DRAINAGE DESCRIPTION SHEETS, ETC.)

MAINLINE PROFILES	MA
ENTRANCE PROFILES	24E
DRAINAGE DESC.	2H(1) - 2H(7)
CROSS-OVER DETAIL	2F(5)

REVISION	STATE	FEDERAL AID	ROUTE	STATE	SHEET NO.
12/09/05 02/08/06 05/29/07	VA.		17	6017-099-129, RW-201, C-501	14



PLAN NO.	PROJECT	FILE NO.	SHEET NO.
	6017-099-129		14