

SURVEYED BY D.W. BROWN (750-252-313)
 SUPERVISED BY T.K. HUGHES, P.E. (757) 925-2-102
 DESIGNED BY K.D. MCKINNA, P.E. (757) 925-3622
 HAMPTON ROADS DISTRICT DESIGN UNIT

REFERENCES
 (PROFILES, DETAIL & DRAINAGE DESCRIPTION SHEETS, ETC.)

MAINLINE PROFILES	17A
CONNECTION PROFILE	17B
ENTRANCE PROFILES	246
DRAINAGE DESC.	247(1) - 247(7)
CROSS-OVER DETAIL	247(5)

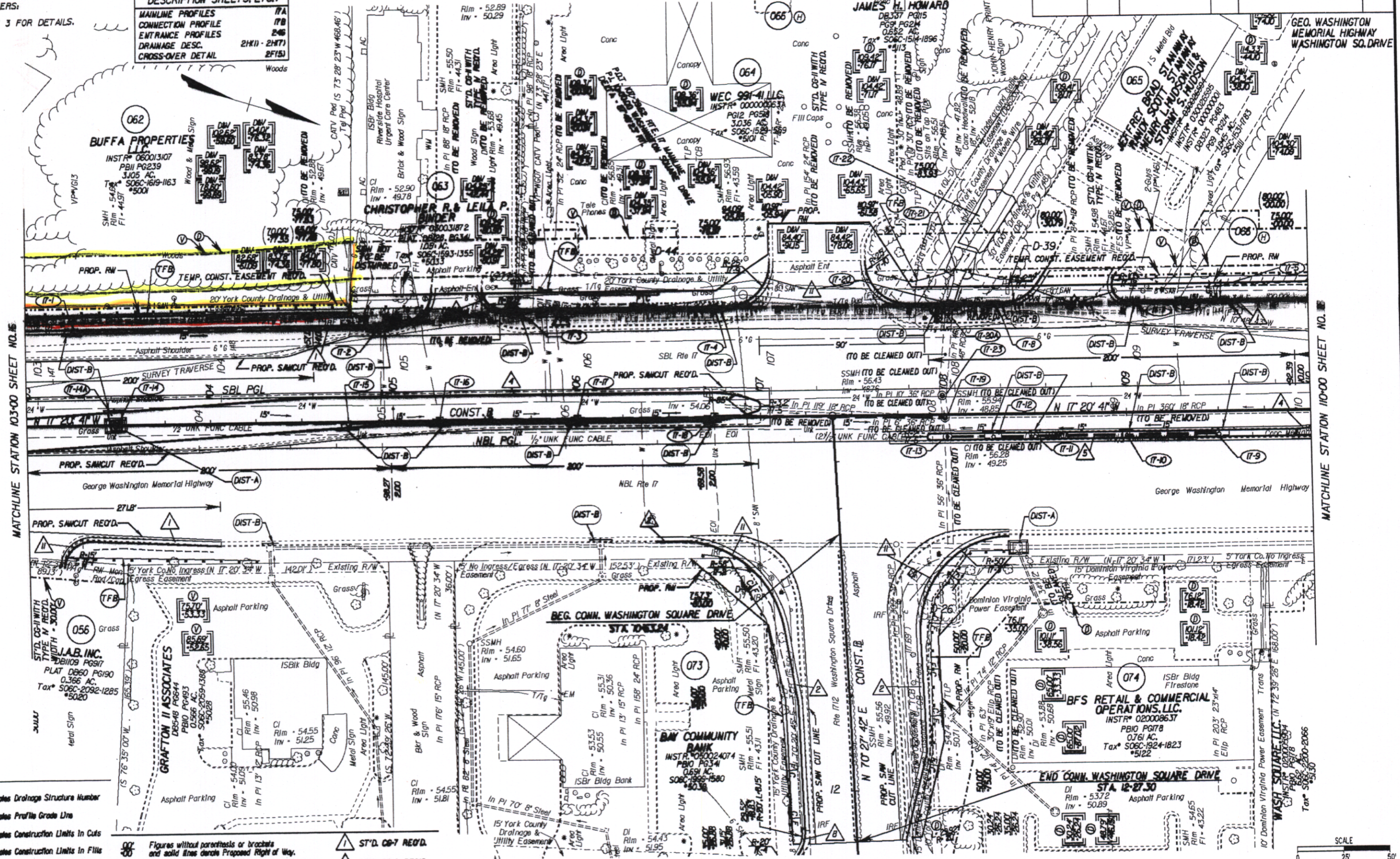
PAGE 1 PAGE 3 PAGE 4

DESIGN FEATURES RELATING TO CONSTRUCTION OR TO REGULATION AND CONTROL OF TRAFFIC MAY BE SUBJECT TO CHANGE AS DEEMED NECESSARY BY THE DEPARTMENT

REVISED 12/08/05 02/06/06	STATE	FEDERAL AID	ROUTE	PROJECT	SHEET NO.
			17	6017-099-129, RW-201, C-501	17

UTILITY OWNERS:
 SEE SHEET 3 FOR DETAILS.

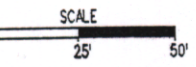
THESE PLANS ARE UNFINISHED AND ARE NOT TO BE USED FOR ANY TYPE OF CONSTRUCTION.



- LEGEND**
- Denotes Drainage Structure Number
 - Denotes Profile Grade Line
 - Denotes Construction Limits in Cuts
 - Denotes Construction Limits in Fills
 - Denotes variable easement required for Verizon Virginia
 - Denotes variable easement required for Dominion Virginia Power

- Figures without parenthesis or brackets and solid lines denote Proposed Right of Way.
- Figures in parenthesis and dot-dash lines denote Temporary Easements.
- Figures in double brackets and dot-dashed lines denote Permanent Utility Easements.
- ▲ ST'D. CG-7 REQ'D.
- ▲ ST'D. CG-2 REQ'D.
- ▲ ST'D. MS-2 REQ'D.
- ▲ ST'D. MS-1A REQ'D.
- ▲ RAD. CG-2 REQ'D.
- ▲ RAD. CG-7 REQ'D.

NOTES
 See General Notes For EBS Legend



PLAN NO.	PROJECT	FILE NO.	SHEET NO.
	6017-099-129		17

Doc # 08-26357

State Hwy Plat Book # 10 Page 223