

CURVE	DELTA ANGLE	RADIUS	ARC LENGTH	TANGENT	CHORD LENGTH	CHORD BEARING
C1	18°08'12"	1402.39'	443.92'	223.83'	442.07'	S 30°48'57" W

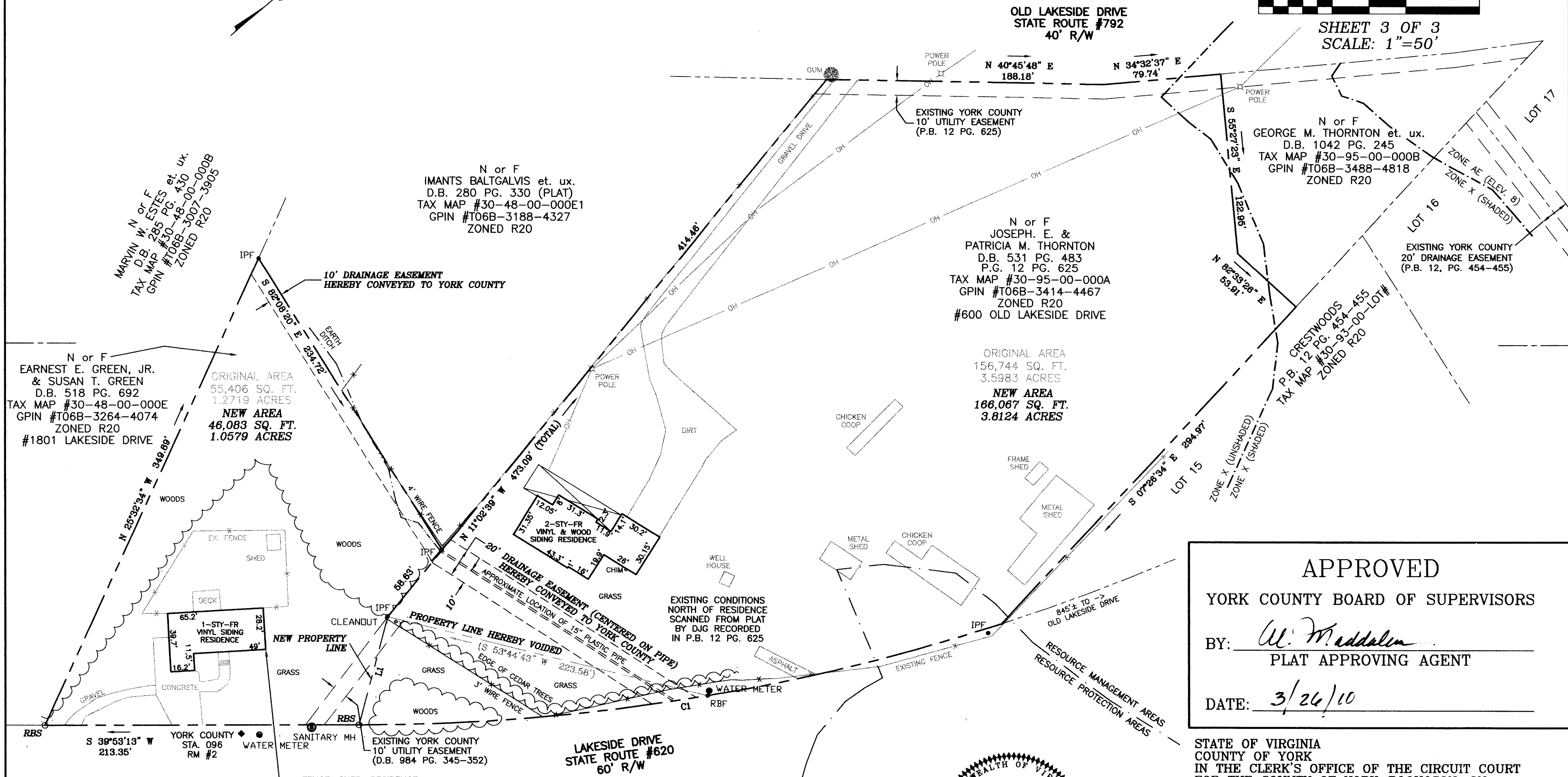
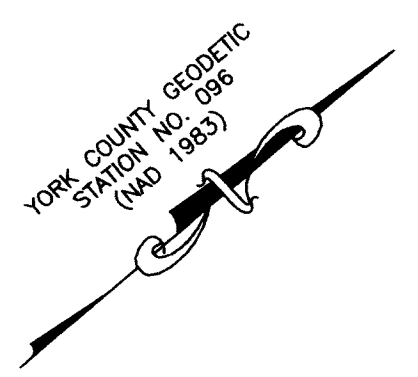
LINE	BEARING	DISTANCE
L1	S 35°10'28" E	76.27'

COMPILED PLAT SHOWING A
BOUNDARY LINE ADJUSTMENT
BETWEEN THE PROPERTIES OF
J.E. & P.M. THORNTON
AND
E.E. GREEN, JR, & S.T. GREEN
GRAFTON DISTRICT
YORK COUNTY, VIRGINIA
APRIL 10, 2008

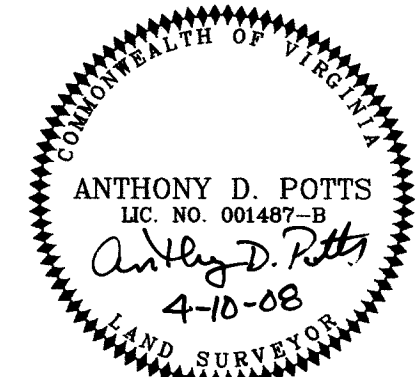
ADPA **A.D. POTTS & ASSOCIATES, INC.**
11524 JEFFERSON AVENUE
NEWPORT NEWS, VIRGINIA 23601
PHONE: (757) 595-4610



SHEET 3 OF 3
SCALE: 1"=50'



APPROVED
YORK COUNTY BOARD OF SUPERVISORS
BY: W. Maddalen
PLAT APPROVING AGENT
DATE: 3/26/10



STATE OF VIRGINIA
COUNTY OF YORK
IN THE CLERK'S OFFICE OF THE CIRCUIT COURT
FOR THE COUNTY OF YORK-POQUOSON, ON
THIS 26th DAY OF March, 2010,
THIS MAP WAS PRESENTED AND ADMITTED TO RECORD
AS THE LAW DIRECTS, AS INSTRUMENT
NUMBER 100004937

TESTE: Lynn S. Mendibay
CLERK
BY: Debra S. Thompson DC
DEPUTY CLERK