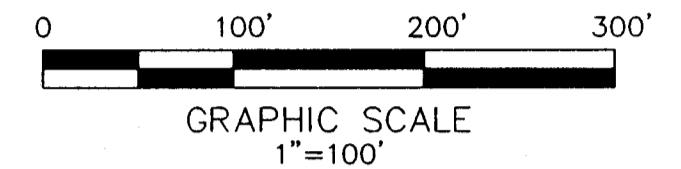


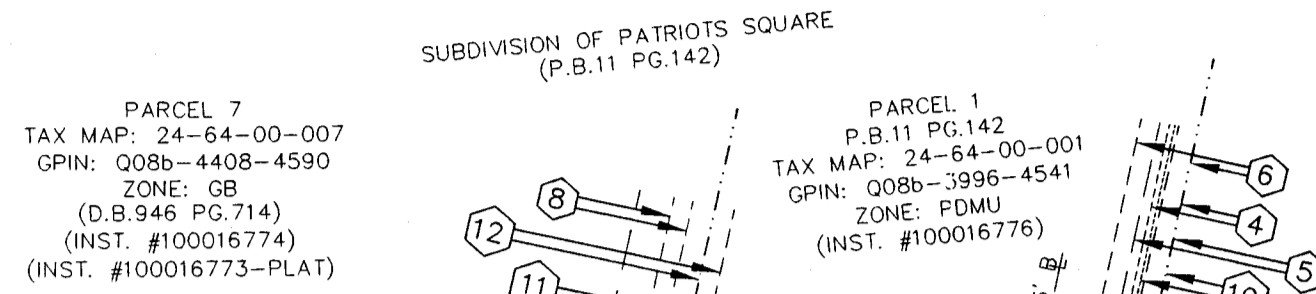
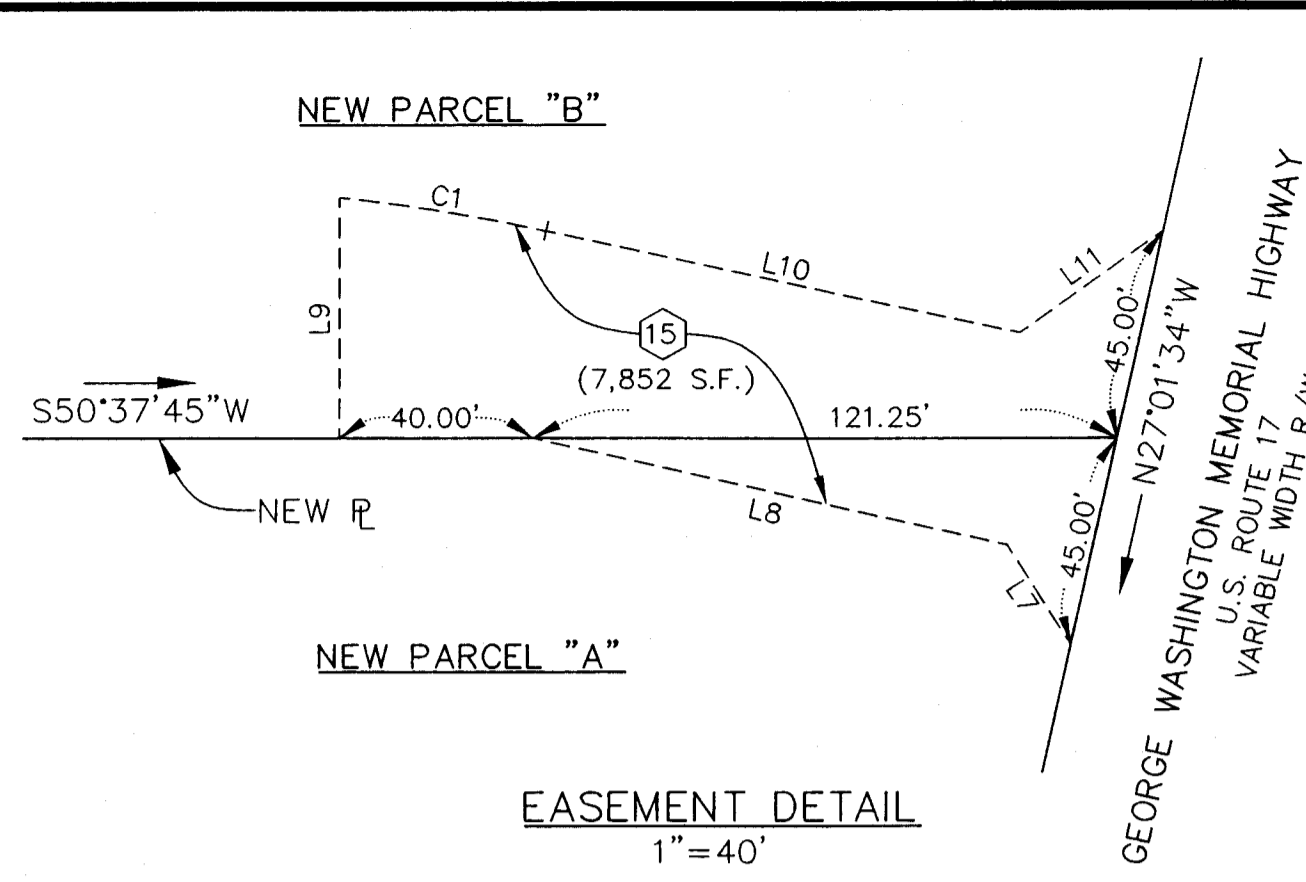
BOUNDARY LINE ADJUSTMENT
 BETWEEN THE PROPERTIES OF
NELSON'S GRANT DEVELOPMENT, LLC
 AND
VIRGINIA HEALTH SERVICES, INC.
 NELSON MAGISTERIAL DISTRICT
 COUNTY OF YORK, VIRGINIA
 SCALE: 1"=100' DATE: OCTOBER 15, 2010
 SHEET 2 OF 2

DAVIS & ASSOCIATES, P.C.
 LAND SURVEYORS AND PLANNERS
 3630 GEORGE WASHINGTON MEMORIAL HIGHWAY
 YORKTOWN, VIRGINIA 23693
 (757)867-8583



CURVE DATA TABLE						
NUMBER	DELTA ANGLE	RADIUS	ARC LENGTH	TANGENT	CHORD LENGTH	CHORD DIRECTION
C1	05°57'01"	417.58'	43.37'	21.70'	43.35'	S59°59'55"W

LINE DATA TABLE		
LINE	BEARING	DISTANCE
L1	N26°54'16"W	150.00'
L2	N08°49'38"E	22.20'
L3	N31°39'59"E	19.08'
L4	S62°58'27"W	107.83'
L5	S63°01'27"W	17.00'
L6	S45°36'12"W	386.69'
L7	S71°03'45"E	25.00'
L8	N63°36'00"E	101.08'
L9	S39°22'15"E	50.98'
L10	S62°58'26"W	100.56'
L11	S14°50'55"W	36.82'
L12	N22°23'46"W	150.47'

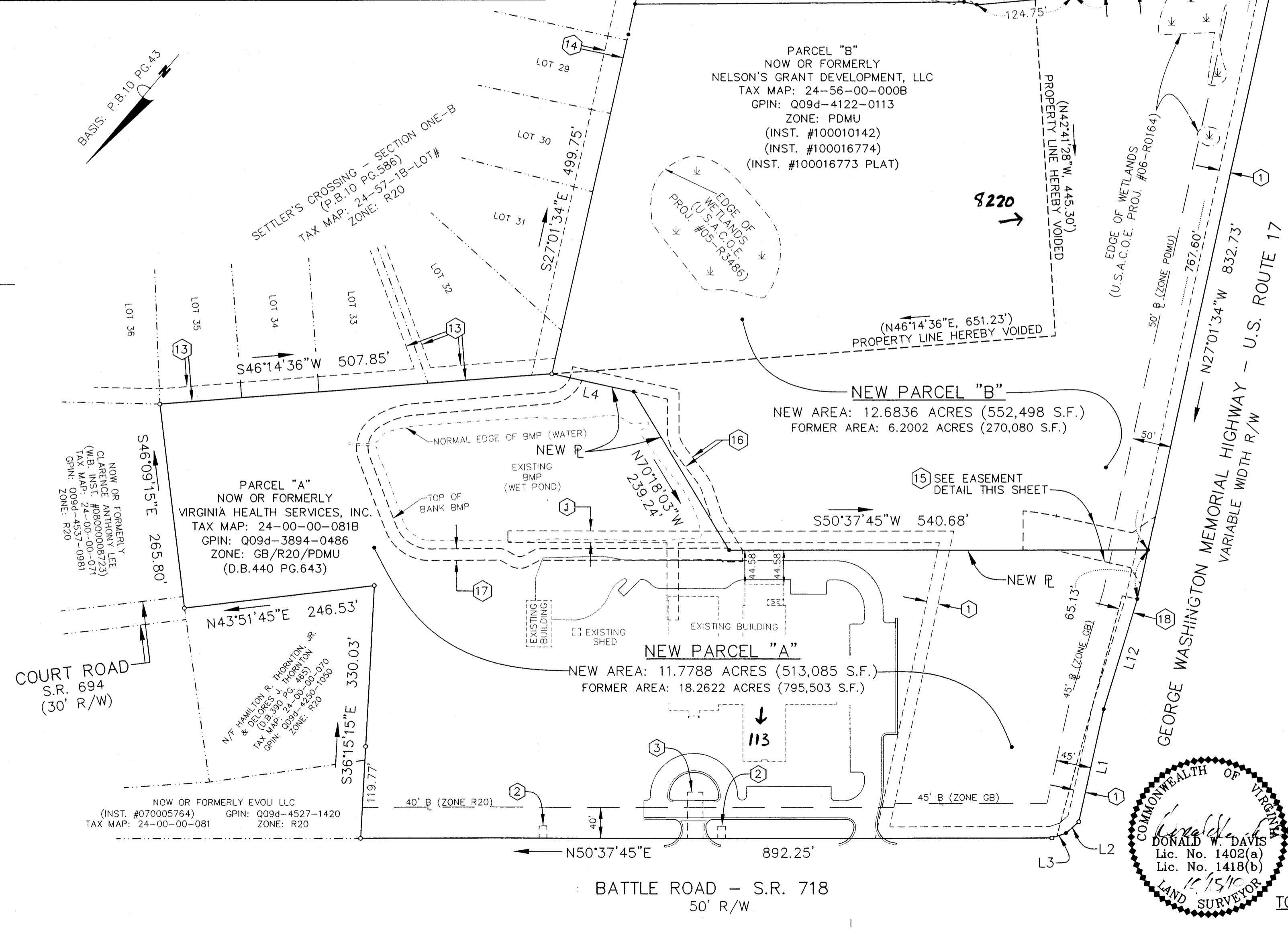
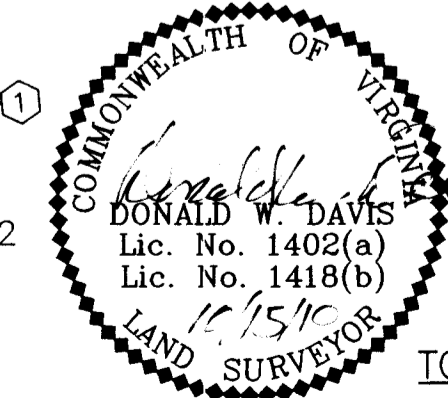


- SYMBOLS -
- 50' B, 45' B, 40' B DENOTES MINIMUM BUILDING SETBACK LINES
 - DENOTES IRON PIPE FOUND
 - DENOTES IRON ROD FOUND
 - DENOTES IRON ROD TO BE SET AT ALL PROPERTY LINE JUNCTURES
 - DENOTES CONCRETE MONUMENT FOUND
 - DENOTES CONCRETE MONUMENT TO BE SET

APPROVED
 YORK COUNTY BOARD OF SUPERVISORS
 BY: Al Maddala
 PLAT APPROVING AGENT
 DATE: 12/9/10

STATE OF VIRGINIA
 COUNTY OF YORK
 IN THE CLERK'S OFFICE OF THE YORK -
 POQUOSON CIRCUIT COURT THIS 10th
 DAY OF December 2010, THIS MAP WAS
 PRESENTED AND ADMITTED TO RECORD AS
 THE LAW DIRECTS AS INSTRUMENT # 100021092
10:24Am
 TESTE: Lynn S. Mendibux
 CLERK
 BY: Davis & Associates, P.C.

TOTAL BOUNDARY ADJUSTED PARCEL AREAS	
PARCEL "B"	
FORMER AREA= 6.2002 ACRES (270,080 S.F.)	
NEW AREA= 12.6836 ACRES (552,498 S.F.)	
PARCEL "A"	
FORMER AREA= 18.2622 ACRES (795,503 S.F.)	
NEW AREA= 11.7788 ACRES (513,085 S.F.)	
TOTAL AREA WITHIN BOUNDARY LINE ADJUSTMENT	
AREA= 24.4624 ACRES (1,065,583 S.F.)	



2010 DEC 15 11:10:24