

**COMPILED PLAT SHOWING
BOUNDARY LINE ADJUSTMENT
BETWEEN THE PROPERTIES OF
JEANETTE J. KEENER,
TRUSTEE OF THE FAMILY TRUST
AND THE JLK FAMILY LLC**

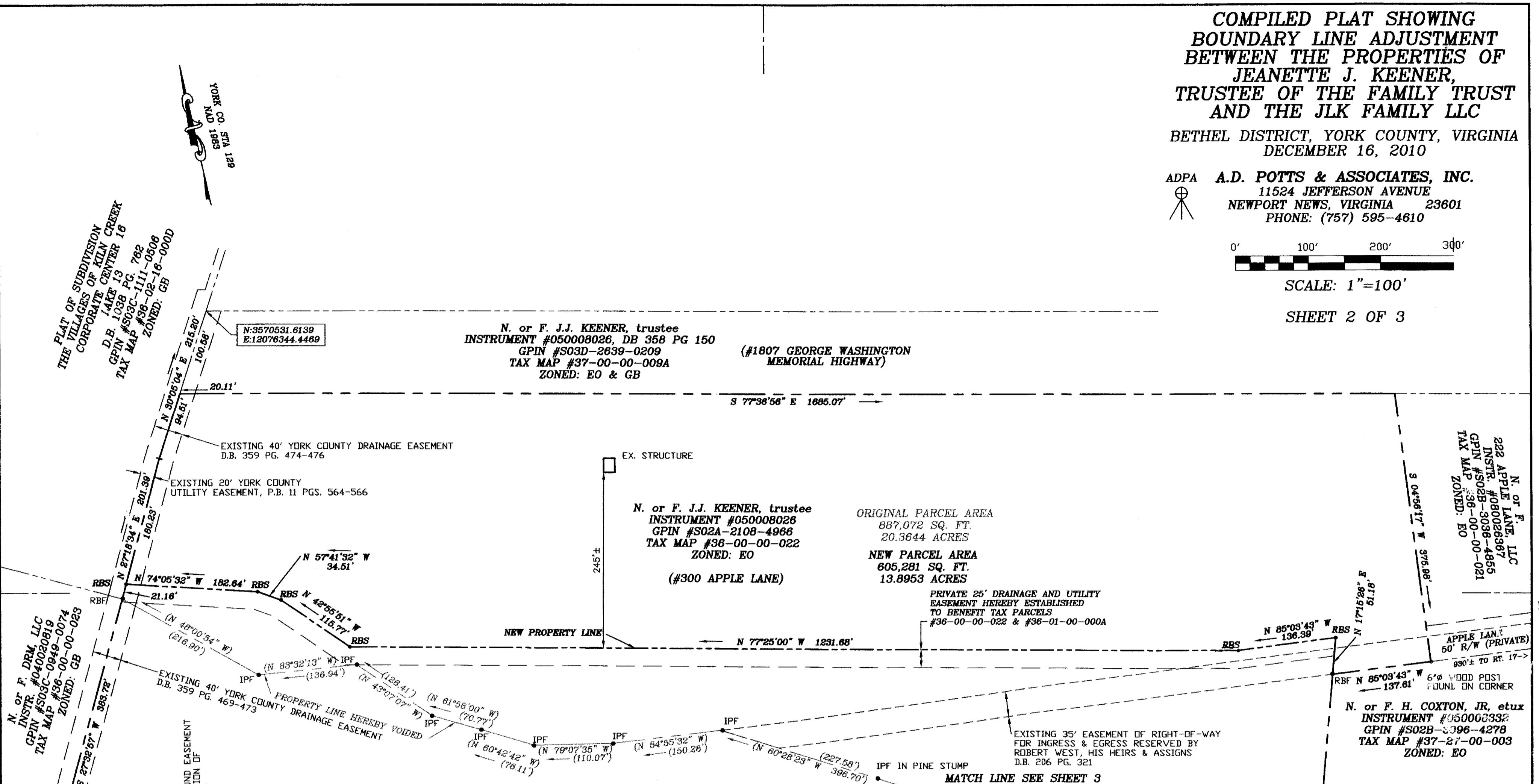
BETHEL DISTRICT, YORK COUNTY, VIRGINIA
DECEMBER 16, 2010

ADPA **A.D. POTTS & ASSOCIATES, INC.**
11524 JEFFERSON AVENUE
NEWPORT NEWS, VIRGINIA 23601
PHONE: (757) 595-4610



SCALE: 1"=100'

SHEET 2 OF 3



APPROVED

YORK COUNTY BOARD OF SUPERVISORS

BY: *Al Maddalena*

PLAT APPROVING AGENT

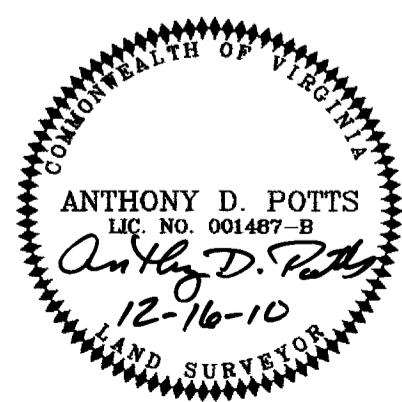
DATE: 12/22/10

STATE OF VIRGINIA
COUNTY OF YORK
IN THE CLERK'S OFFICE OF THE CIRCUIT COURT
FOR THE COUNTY OF YORK-POQUOSON, ON
THIS 28 DAY OF December, 2010
THIS MAP WAS PRESENTED AND ADMITTED TO RECORD
AS THE LAW DIRECTS, AS INSTRUMENT 2:33pm

NUMBER 60021723

TESTE: *Lynn S. Mendix*
CLERK

BY: *[Signature]*
DEPUTY CLERK



210 DEC 28 PM 2:34