

PLAT OF SUBDIVISION
TOWNHOMES AT MARTIN FARM

GRAFTON DISTRICT YORK COUNTY VIRGINIA

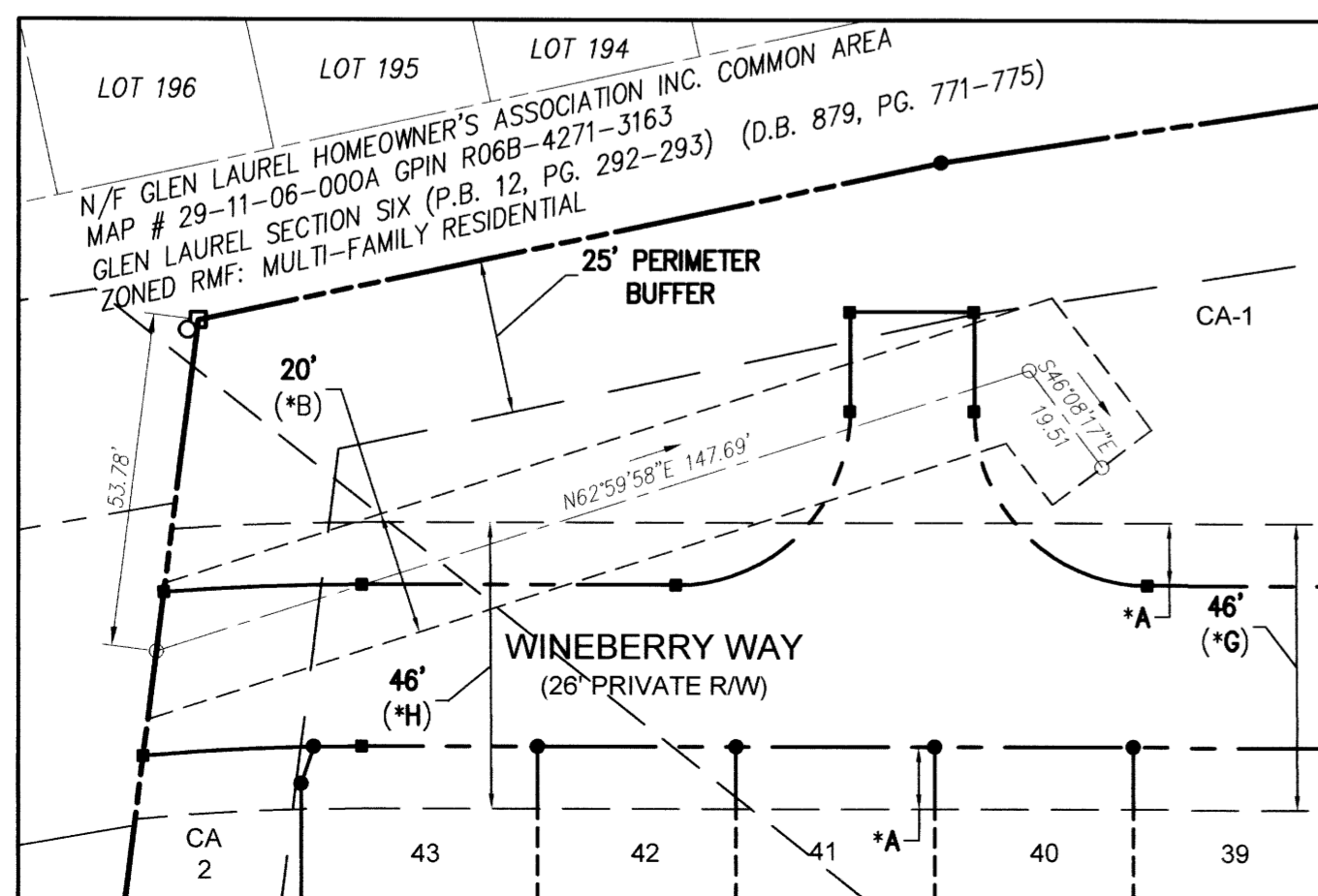
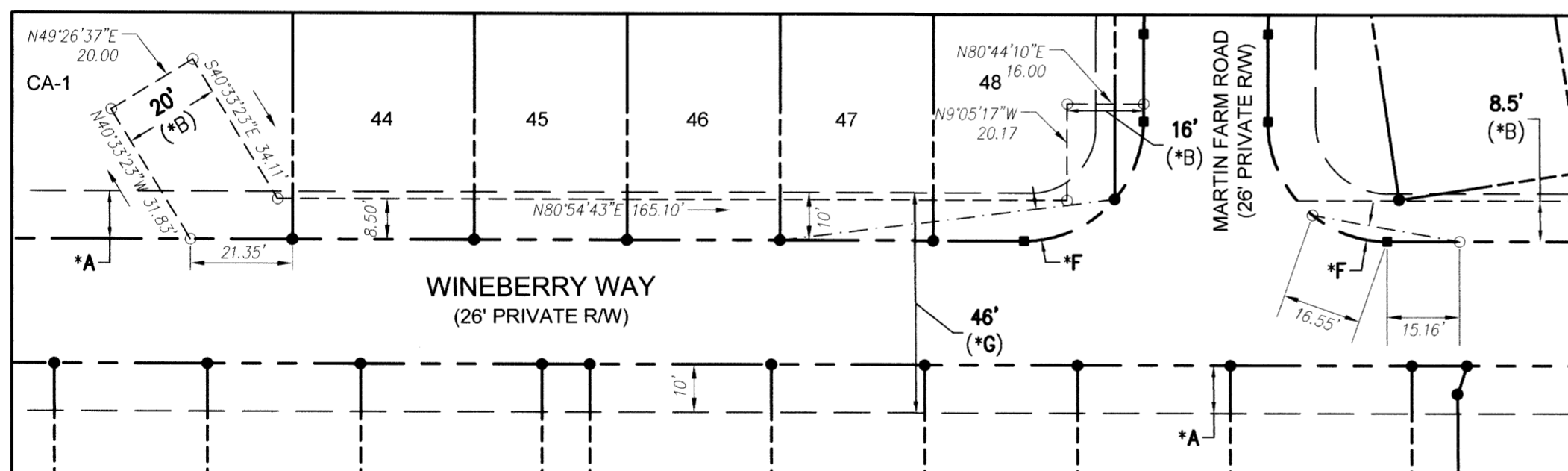
DATE: 5/02/16 SCALE: 1"=30' DRAWN: JFS



5248 Old Towne Road, Suite 1
Williamsburg, Virginia 23188
Phone: (757) 253-0040
Fax: (757) 220-8894
www.aesva.com

Hampton Roads | Central Virginia | Middle Peninsula

JOB NO. W10375 SHEET 7 OF 7



EASEMENT LEGEND

- *A - 10' LANDSCAPE PRESERVATION EASEMENT HEREBY CONVEYED TO THE TOWNHOMES AT MARTIN FARM HOMEOWNERS ASSOCIATION
- *B - DRAINAGE EASEMENT HEREBY CONVEYED TO THE TOWNHOMES AT MARTIN FARM HOMEOWNERS ASSOCIATION
- *C - 10' X 20' DRAINAGE EASEMENT HEREBY CONVEYED TO THE TOWNHOMES AT MARTIN FARM HOMEOWNERS ASSOCIATION
- *D - VARIABLE WIDTH DRAINAGE EASEMENT HEREBY CONVEYED TO YORK COUNTY
- *F - VARIABLE WIDTH SIGHT EASEMENT HEREBY CONVEYED TO THE TOWNHOMES AT MARTIN FARM HOMEOWNERS ASSOCIATION AND YORK COUNTY
- *G - WATERLINE EASEMENT TO BE CONVEYED TO THE CITY OF NEWPORT NEWS
- *H - UTILITY EASEMENT HEREBY CONVEYED TO YORK COUNTY

ALL ROADS WITHIN THE TOWNHOMES AT MARTIN FARM SUBDIVISION ARE TO BE NON-EXCLUSIVE INGRESS/EGRESS ACCESS EASEMENTS HEREBY CONVEYED TO THE TOWNHOMES AT MARTIN FARM HOMEOWNERS ASSOCIATION

APPROVED:

YORK COUNTY BOARD OF SUPERVISORS

BY: Oran Kassel PLAT APPROVING AGENT

DATE: MARCH 22, 2017



STATE OF VIRGINIA
COUNTY OF YORK

IN THE CLERK'S OFFICE OF THE CIRCUIT COURT FOR THE COUNTY OF YORK-POQUOSON THE 28th DAY OF March, 2017.

THIS MAP WAS PRESENTED AND ADMITTED TO RECORD AS THE LAW DIRECTS, AS INSTRUMENT NO. 170005526 3:23 pm

TESTE: Kristen N. Nelson CLERK

BY: Talvin D. Baldwin Jr.