

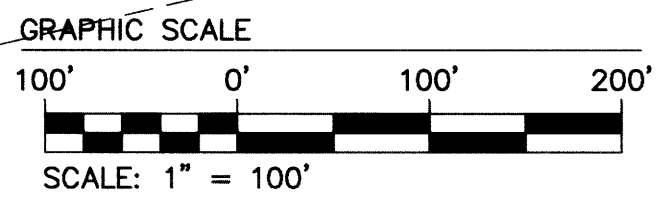
PLAT OF SUBDIVISION
WHITTAKER'S MILL
SINGLE FAMILY TOWNHOMES
SECTION 1, PHASE 1B



BRUTON DISTRICT COUNTY OF YORK VIRGINIA
Date: 04-11-17 Scale: 1"=100' Proj. No.: 7804-08B Proj. Contacts: TRS/SCL

AES
CONSULTING ENGINEERS
5248 Olde Towne Road, Suite 1
Williamsburg, Virginia 23188
Phone: (757) 253-0040
Fax: (757) 220-8994
www.aesva.com
Hampton Roads | Central Virginia | Middle Peninsula

SHEET 2 OF 5



LEGEND

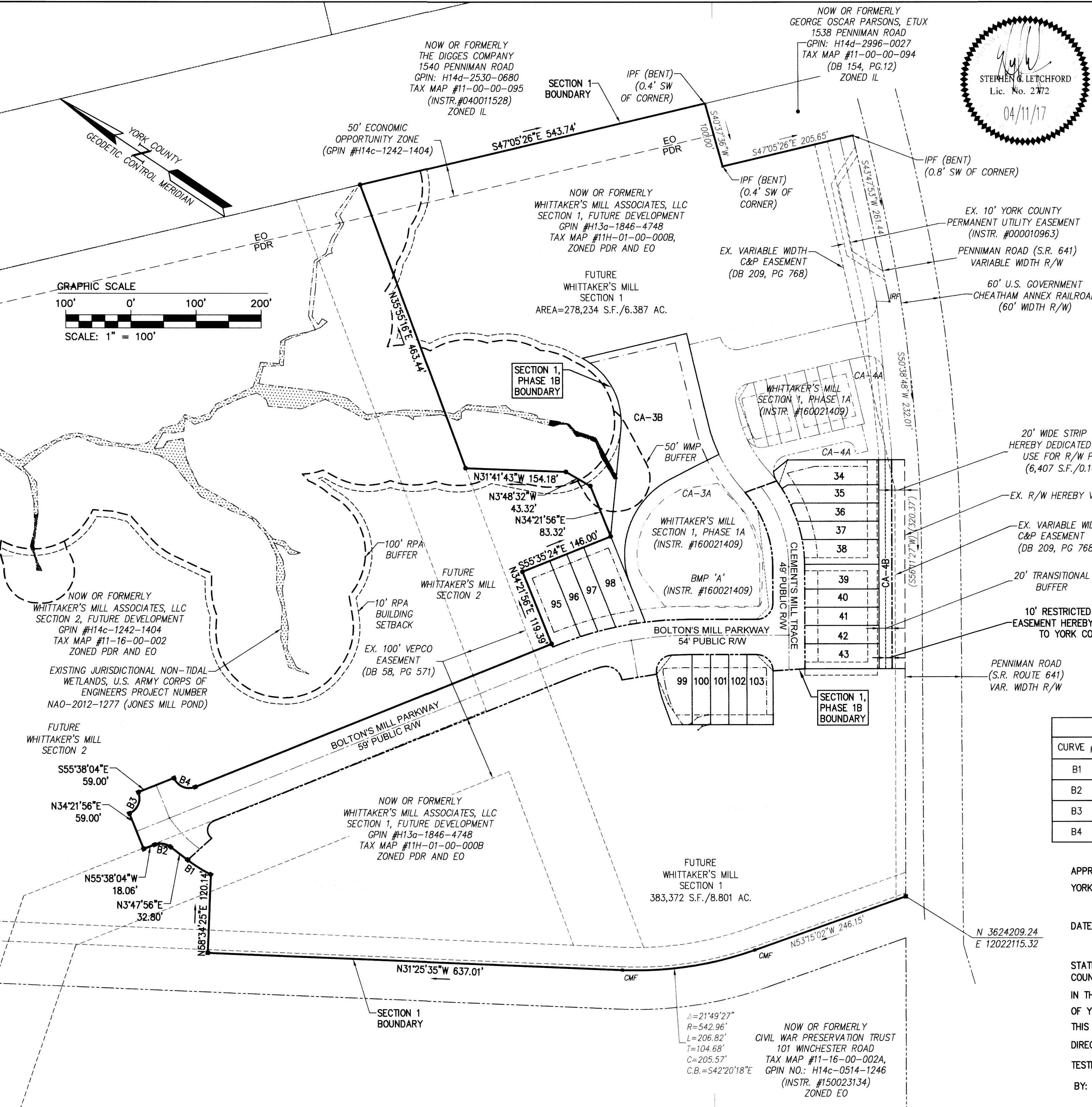
- PROPERTY LINE
- - - RIGHT-OF-WAY LINE
- BUILDING SETBACK LINE
- - - UTILITY EASEMENT
- - - SIGHT EASEMENT
- CMF CONCRETE MONUMENT FOUND
- IRF IRON ROD FOUND
- CM CONCRETE MONUMENT SET
- IR IRON ROD SET
- RPA RESOURCE PROTECTION AREA
- WMP WATERSHED MANAGEMENT AND PROTECTION AREA OVERLAY DISTRICT
- N/F NOW OR FORMERLY

BOUNDARY CURVE TABLE

CURVE #	DELTA	RADIUS	LENGTH	TANGENT	CHORD	CHORD BEARING
B1	10°46'11"	224.50'	42.20'	21.16'	42.14'	S1°35'10"E
B2	59°26'00"	25.00'	25.93'	14.27'	24.79'	N25°55'04"W
B3	90°00'00"	25.00'	39.27'	25.00'	35.36'	N79°21'56"E
B4	90°00'00"	25.00'	39.27'	25.00'	35.36'	S10°38'04"E

APPROVED:
YORK COUNTY BOARD OF SUPERVISORS
Susan Kasse
DATE: APRIL 28, 2017

STATE OF VIRGINIA
COUNTY OF YORK
IN THE CLERK'S OFFICE OF THE CIRCUIT COURT FOR THE COUNTY OF YORK-POQUOSON THE 28th DAY OF April, 2017
THIS MAP WAS PRESENTED AND ADMITTED TO RECORD AS THE LAW at 2:51 p.m.
DIRECTS, AS INSTRUMENT NO. 170001561
TESTE: Kristen N. Nelson CLERK
BY: John G. Mount, D.C.



Δ=21°49'27"
R=542.96'
L=206.82'
T=104.68'
C=205.57'
C.B.=S42°20'18"E

NOW OR FORMERLY
CIVIL WAR PRESERVATION TRUST
101 WINCHESTER ROAD
TAX MAP #11-16-00-002A
GPIN NO.: H14c-0514-1246
(INSTR. #150023134)
ZONED EO