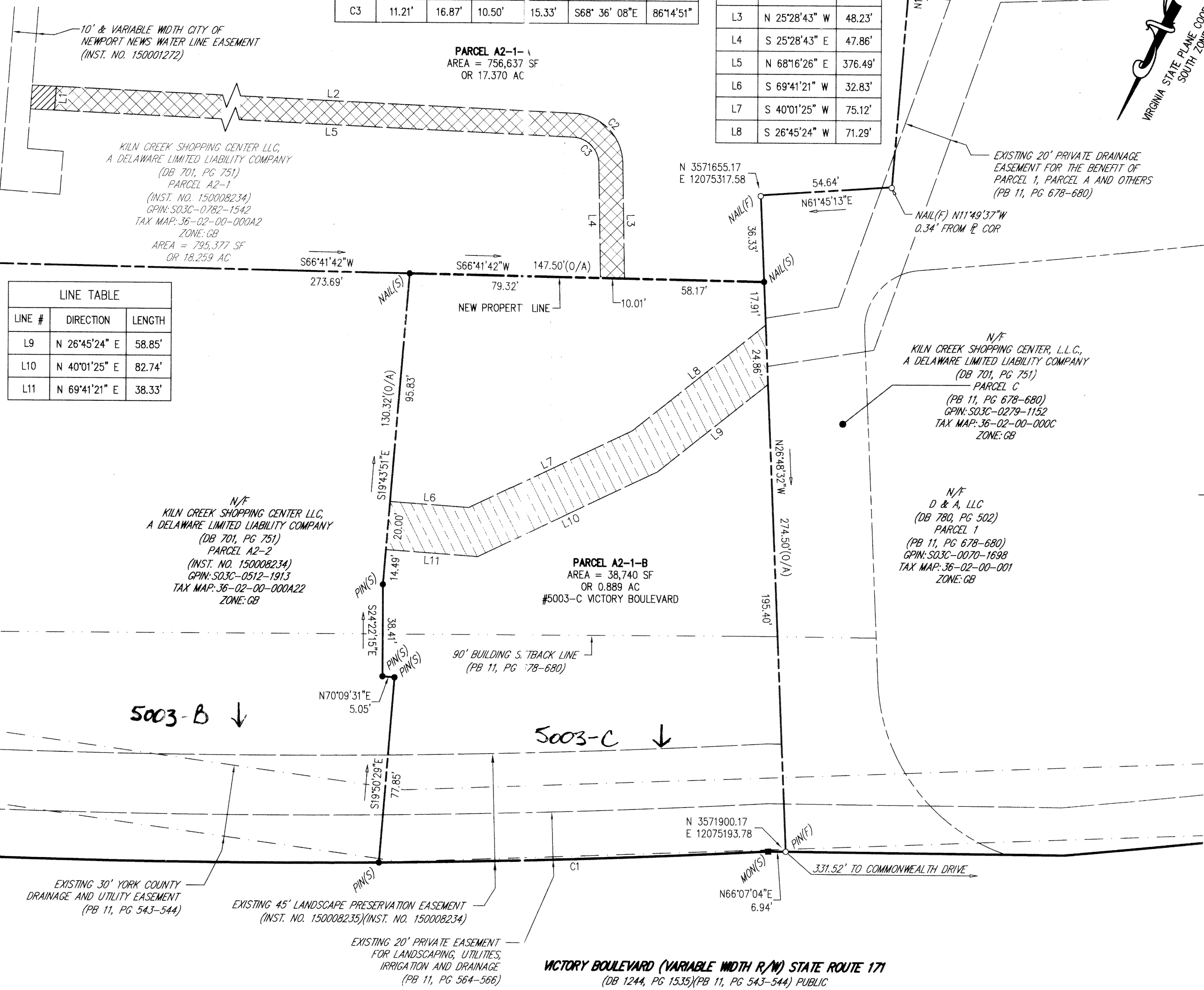


CURVE TABLE						
CURVE	RADIUS	LENGTH	TANGENT	CHORD	BEARING	DELTA
C1	3734.72'	162.44'	81.23'	162.43'	N63° 37' 50"E	2°29'31"
C2	21.21'	31.93'	19.86'	29.00'	N68° 36' 08"W	86°14'51"
C3	11.21'	16.87'	10.50'	15.33'	S68° 36' 08"E	86°14'51"

LINE TABLE		
LINE #	DIRECTION	LENGTH
L1	N 20°06'26" W	10.00'
L2	S 68°16'26" W	376.21'
L3	N 25°28'43" W	48.23'
L4	S 25°28'43" E	47.86'
L5	N 68°16'26" E	376.49'
L6	S 69°41'21" W	32.83'
L7	S 40°01'25" W	75.12'
L8	S 26°45'24" W	71.29'



LINE TABLE		
LINE #	DIRECTION	LENGTH
L9	N 26°45'24" E	58.85'
L10	N 40°01'25" E	82.74'
L11	N 69°41'21" E	38.33'

SUBDIVISION OF
PARCEL A2-1
"THE VILLAGES OF KILN CREEK CORPORATE CENTERS - 12 & 13"
(INST. NO. 150008234)
BETHEL DISTRICT, YORK COUNTY, VIRGINIA
JUNE 14, 2016
SCALE: 1" = 30'

MSA, P.C.
Environmental Sciences • Planning • Surveying
Civil & Environmental Engineering • Landscape Architecture

5033 Rouse Drive, Virginia Beach, VA 23462
757-490-9264 (Ofc) 757-490-0634 (Fax)
www.msaonline.com

SHEET 2 OF 2



GRAPHIC SCALE
1" = 30'

- LEGEND**
- IRON PIN FOUND - PIN(F)
 - IRON PIN SET - PIN(S)
 - NAIL SET - NAIL(S)
 - DRILL HOLE SET - DH(S)
 - CONC. STEEL PIN FOUND - PIN(F)
 - CONC. STEEL PIN SET - PIN(S)



JEFFREY J. VERRETHER

DATED

APPROVED
YORK COUNTY BOARD OF SUPERVISORS

BY: Steve Lasser
PLAT APPROVING AGENT

DATE: JUL 10, 2017

STATE OF VIRGINIA
COUNTY OF YORK

IN THE CLERK'S OFFICE OF THE CIRCUIT COURT FOR THE COUNTY OF YORK, POQUOSON, ON THE 10 DAY OF JULY, 2017, THIS MAP WAS PRESENTED AND ADMITTED TO RECORD AS THE LAW DIRECTS AS INSTRUMENT NO. 17-00000000

TESTE: Robert M. Nelson, CLERK.

BY: Steve Lasser

DRWN. BY WGS
CHK'D. BY JJV DATE 6-14-16

■ DENOTES 10' X 10' CITY OF NEWPORT NEWS WATER LINE EASEMENT
(INST. NO. 170008088)

▨ DENOTES 10' PRIVATE UTILITY EASEMENT HEREBY ESTABLISHED FOR THE BENEFIT OF PARCEL A2-1-B

▩ DENOTES 20' PRIVATE DRAINAGE EASEMENT HEREBY ESTABLISHED FOR THE BENEFIT OF PARCEL A2-2

JOB# 141226