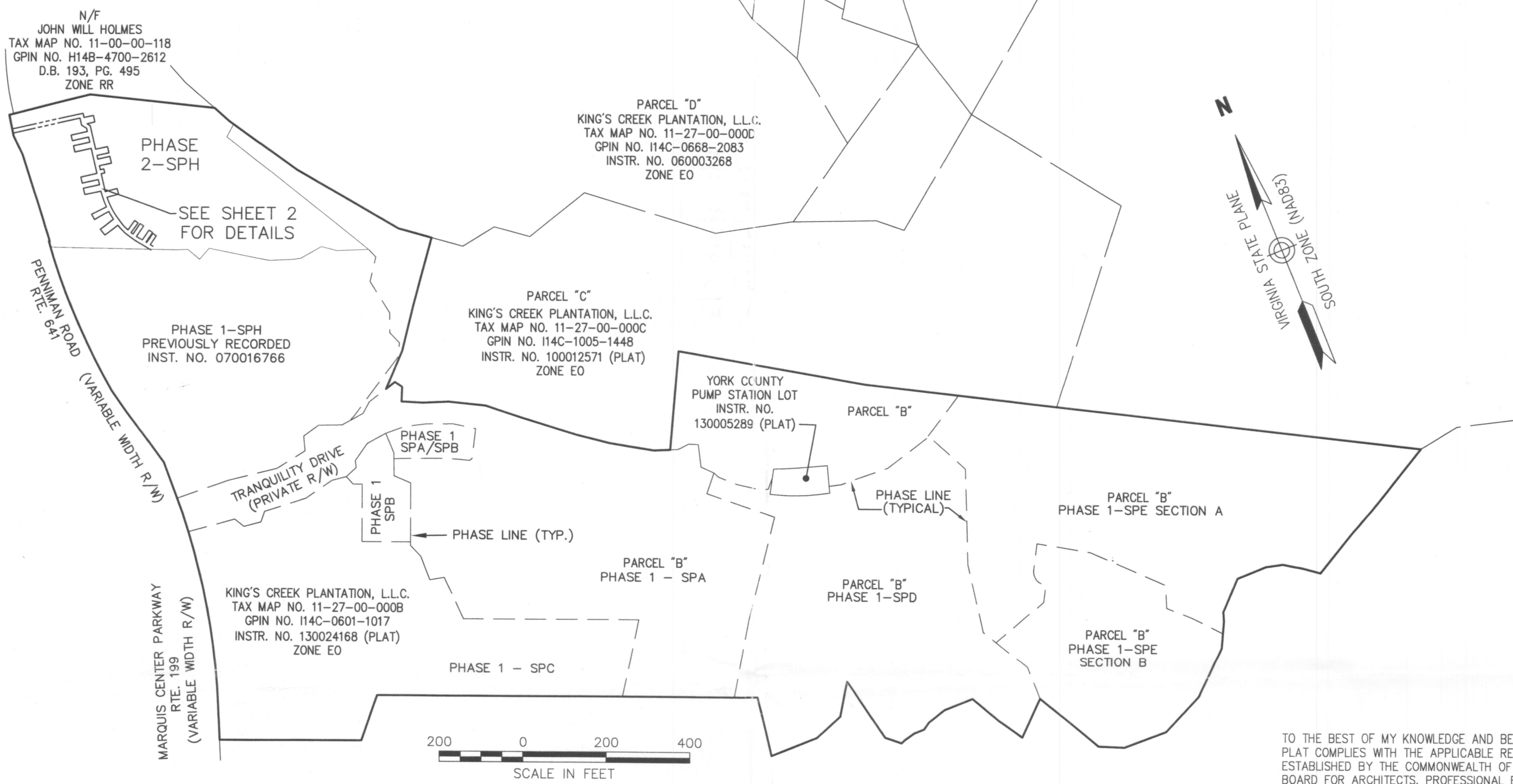


Saved Friday, September 22, 2017 9:08:29 AM CORSEBORNE Plotted Monday, September 25, 2017 7:54:46 AM Orsborne, Christopher \\VIB\PROJ\WILLIAMSBUFG\33306.00\CAD\SP\PLANSET\3330600-SPH-PH2-WLEASE



TO THE BEST OF MY KNOWLEDGE AND BELIEF, THIS PLAT COMPLIES WITH THE APPLICABLE REGULATIONS ESTABLISHED BY THE COMMONWEALTH OF VIRGINIA BOARD FOR ARCHITECTS, PROFESSIONAL ENGINEERS, LAND SURVEYORS, CERTIFIED INTERIOR DESIGNERS AND LANDSCAPE ARCHITECTS.

LINE DATA TABLE			LINE DATA TABLE			LINE DATA TABLE		
SEGMENT	LENGTH	BEARING	SEGMENT	LENGTH	BEARING	SEGMENT	LENGTH	BEARING
L1	12.89'	N36°42'07"W	L21	10.57'	N9°23'20"E	L41	13.75'	S80°36'40"E
L2	11.89'	N36°42'07"W	L22	168.95'	N80°36'40"W	L42	34.35'	S83°03'02"E
L3	18.09'	N36°42'07"W	L23	44.41'	N73°53'16"E	L43	34.26'	S84°07'49"E
L4	4.11'	N9°23'20"E	L24	44.27'	N75°50'41"E	L44	32.68'	N57°54'59"E
L5	6.13'	N9°23'20"E	L25	44.61'	S82°03'05"W	L45	35.13'	N55°49'26"E
L6	22.63'	N9°23'20"E	L26	44.82'	S85°22'00"W	L46	33.06'	N55°56'58"E
L7	5.08'	N9°23'20"E	L27	44.76'	S80°36'40"E	L47	30.90'	N55°56'49"E
L8	7.09'	N9°23'20"E	L28	44.76'	S80°36'40"E			
L9	19.85'	N9°23'20"E	L29	44.74'	S80°36'40"E			
L10	6.54'	N9°23'20"E	L30	44.74'	S80°36'40"E			
L11	19.09'	N9°23'20"E	L31	44.93'	S80°36'40"E			
L12	5.33'	N9°23'20"E	L32	44.93'	S80°36'40"E			
L13	14.44'	N9°23'20"E	L33	44.78'	N80°36'40"W			
L14	5.37'	N9°23'20"E	L34	44.78'	N80°36'40"W			
L15	22.66'	N9°23'20"E	L35	28.02'	S80°36'40"E			
L16	3.64'	N9°23'20"E	L36	28.02'	S80°36'40"E			
L17	15.08'	N9°23'20"E	L37	34.31'	S80°36'40"E			
L18	12.33'	N46°51'40"W	L38	34.31'	N80°36'40"W			
L19	6.57'	N9°23'20"E	L39	34.53'	S80°36'40"E			
L20	5.98'	N9°23'20"E	L40	34.53'	S80°36'40"E			

CURVE DATA TABLE						
SEGMENT	LENGTH	RADIUS	DELTA	TANGENT	CHORD	CHORD BEARING
C1	8.05'	194.00'	002°22'36"	4.02'	8.05'	N32°26'44"W
C2	16.06'	194.00'	004°44'32"	8.03'	16.05'	N28°53'10"W
C3	35.22'	194.00'	010°24'11"	17.66'	35.18'	N21°18'49"W
C4	6.63'	194.00'	001°57'25"	3.31'	6.63'	N15°08'01"W
C5	31.61'	194.00'	009°20'06"	15.84'	31.57'	N09°29'16"W
C6	2.17'	194.00'	000°38'22"	1.08'	2.17'	N04°30'02"W
C7	31.36'	194.00'	009°15'47"	15.72'	31.33'	N00°27'03"E
C8	4.92'	194.00'	001°27'11"	2.46'	4.92'	N05°48'32"E
C9	9.66'	194.00'	002°51'13"	4.83'	9.66'	N07°57'43"E



**PLAT OF
WATER MAIN EASEMENT
PROJECTING (ON/ACROSS) LAND OF
KING'S CREEK PLANTATION, LLC.
TO BE CONVEYED TO
CITY OF NEWPORT NEWS
SHEET 1 OF 2**

BRUTON DISTRICT, YORK COUNTY, VIRGINIA
DATE: 9/25/17 SCALE: 1"=200'

THIS PLAT HAS BEEN COMPILED FROM RECORDS



Transportation
Land Development
Environmental Services

351 McLaws Circle, Suite 3
Williamsburg, Virginia 23185
757 220 0500 • FAX 757 903 2794

NY NW Ext. Agreement No. 062-FY 2017 PRINT FILE NO. N-12448