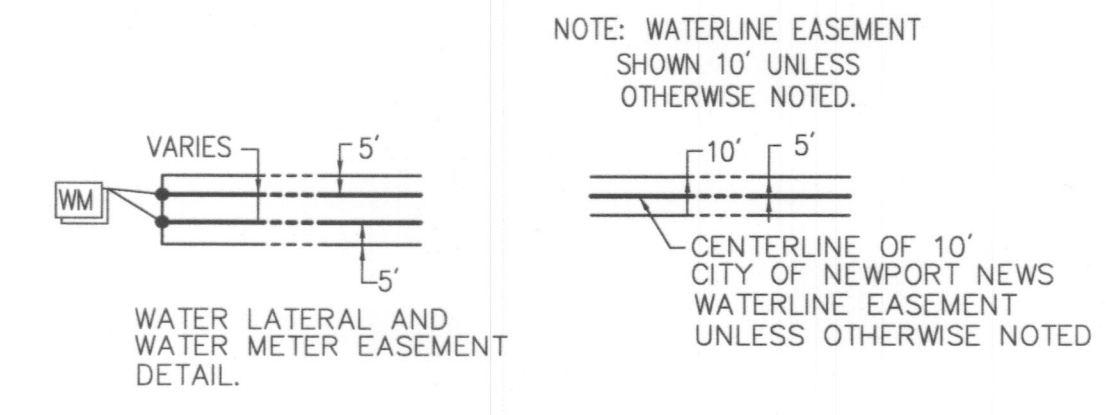
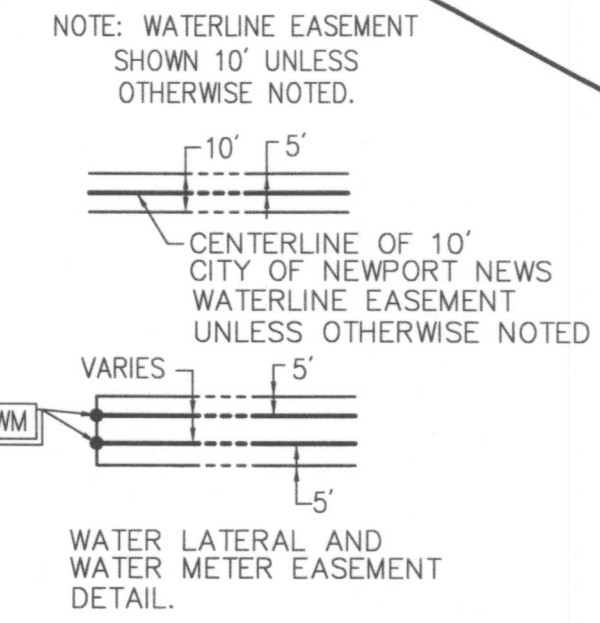
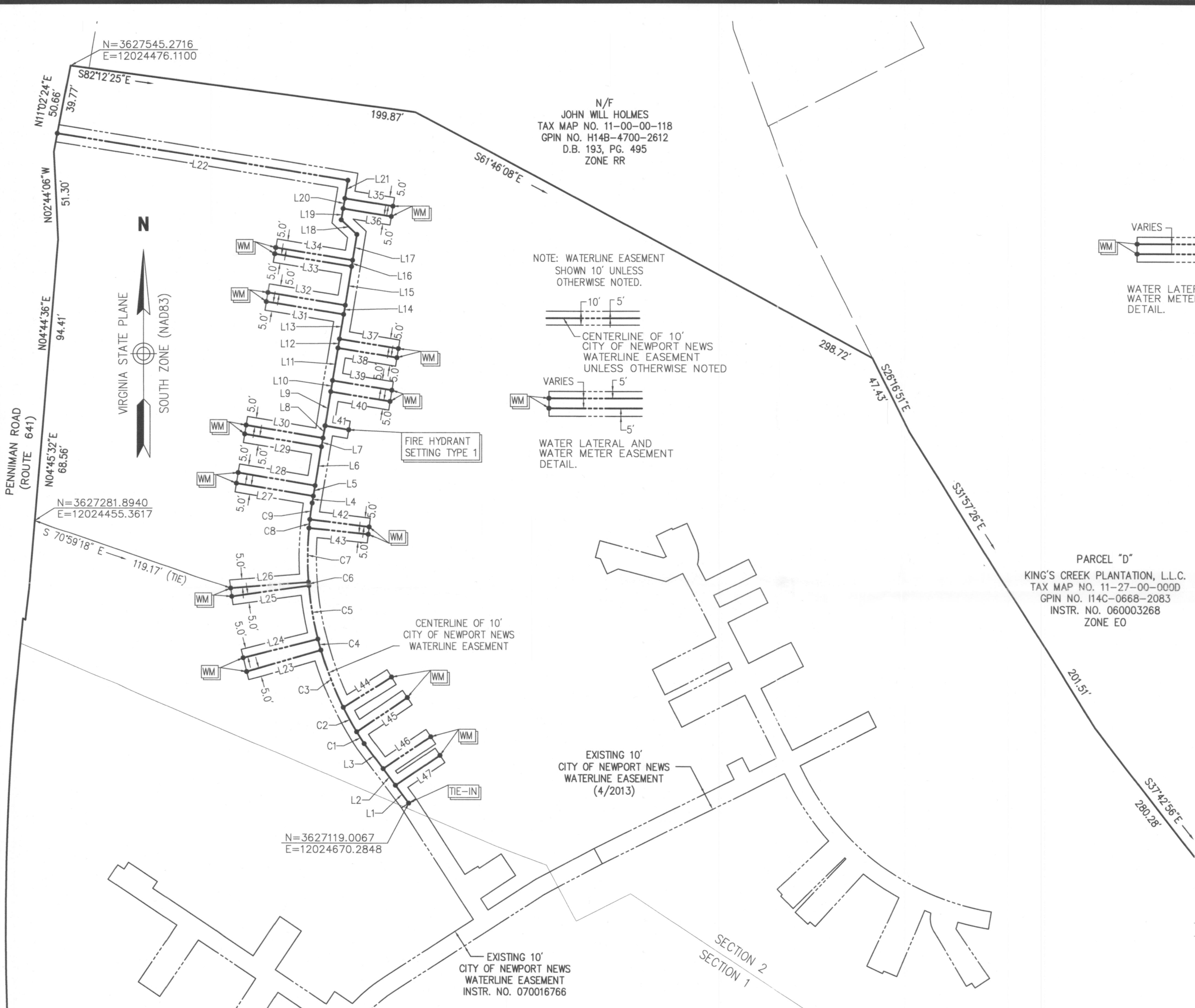
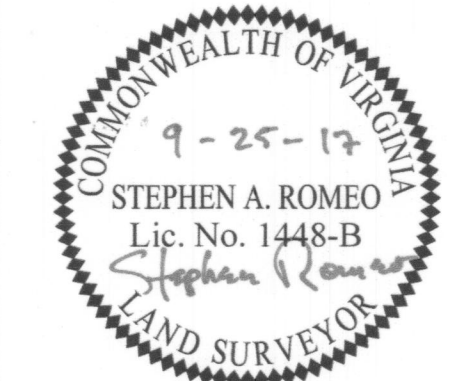


170020878

Saved Friday, September 22, 2017 9:08:29 AM CORSOORNE Plotted Monday, September 25, 2017 7:55:12 AM Orsborne, Christopher. \\VHB\PROJ\WILLIAMS\BUREAU\33306.00\CAD\SR\PLANSET\3330600-SPH-PH2-WLEASE



TO THE BEST OF MY KNOWLEDGE AND BELIEF, THIS PLAT COMPLIES WITH THE APPLICABLE REGULATIONS ESTABLISHED BY THE COMMONWEALTH OF VIRGINIA BOARD FOR ARCHITECTS, PROFESSIONAL ENGINEERS, LAND SURVEYORS, CERTIFIED INTERIOR DESIGNERS AND LANDSCAPE ARCHITECTS.



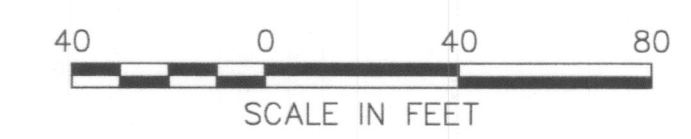
PLAT OF
WATER MAIN EASEMENT
PROJECTING (ON/ACROSS) LAND OF
KING'S CREEK PLANTATION, LLC.
TO BE CONVEYED TO
CITY OF NEWPORT NEWS
SHEET 2 OF 2

BRUTON DISTRICT, YORK COUNTY, VIRGINIA
DATE: 9/25/17 SCALE: 1"=40'

NOTE:
CENTERLINE OF MAIN WATER LINE SHOWN BASED ON FIELD LOCATION OF ABOVE GROUND FEATURES PERFORMED BY VHB DURING SEPTEMBER 2017 AND RECORD DRAWINGS PROVIDED BY C.A. BARRS.

SERVICE LINES AND EASEMENTS AROUND WATER METERS SHOWN ON THIS PLAT ARE BASED ON APPROVED SITE PLAN AND CITY OF NEWPORT NEWS KING'S CREEK PLANTATION "SPH" THE ESTATES PLAN SHEETS 2 AND 3 OF 7 DATED 7-27-2006, DWG. FILE NO. H-7512-2 AND PRINT FILE NO. N-11401-2.

WATER METERS NOT YET SET.



vhb Transportation Land Development Environmental Services
351 McLaws Circle, Suite 3
Williamsburg, Virginia 23185
757 220 0500 • FAX 757 903 2794

PROJECT NO: 34141.00	DRAWN BY: CRO	CHECKED BY: SAR
----------------------	---------------	-----------------

N:\WWW\Ext. AGREEMENT 062-FY2017\PRINTABLE NO. N-12448