

PLAT OF SUBDIVISION ARBORDALE TOWNHOMES

BRUTON DISTRICT
YORK COUNTY, VIRGINIA

Date: 05/03/18 Scale: 1"=30' Proj. No.: W10466-00 Proj. Contacts: JAG/SJB



5248 Olds Towne Road, Suite 1
Williamsburg, Virginia 23188
Phone: (757) 253-0040
Fax: (757) 220-8994
www.aesva.com

Hampton Roads | Central Virginia | Middle Peninsula

SHEET 5 OF 5



20 FEB 26 PM 2:07

LEGEND

- MATCHLINE
- EX. RIGHT OF WAY LINE
- RIGHT OF WAY LINE
- EX. PROPERTY LINE
- PROPERTY LINE
- BUILDING SETBACK LINE
- SIGHT EASEMENT LINE
- EASEMENT LINE
- EX. EASEMENT LINE
- IRF IRON ROD FOUND
- IRON ROD SET
- PROPERTY CORNER
- CONCRETE MONUMENT FOUND
- RIGHT-OF-WAY MONUMENT SET
- CONCRETE MONUMENT PER PREVIOUS PLAT
- ROD PER PREVIOUS PLAT
- INSTR. INSTRUMENT
- N/F NOW OR FORMERLY
- B.S.L. BUILDING SETBACK LINE
- CL CENTERLINE
- ESMT EASEMENT
- H.O.A. HOMEOWNER'S ASSOCIATION

NOTE:
SEE SHEET 2 FOR CURVE TABLES.

APPROVED:
BY YORK COUNTY BOARD OF SUPERVISORS

BY: *Sharon Kessel* PLAT APPROVING AGENT

DATE: FEBRUARY 18, 2020

STATE OF VIRGINIA
COUNTY OF YORK

IN THE CLERK'S OFFICE OF THE CIRCUIT COURT FOR THE COUNTY OF YORK-POQUOSON, THE 26th DAY OF February, 2020.

THIS MAP WAS PRESENTED AND ADMITTED TO RECORD AS THE LAW DIRECTS, AS INSTRUMENT NO. 200003426

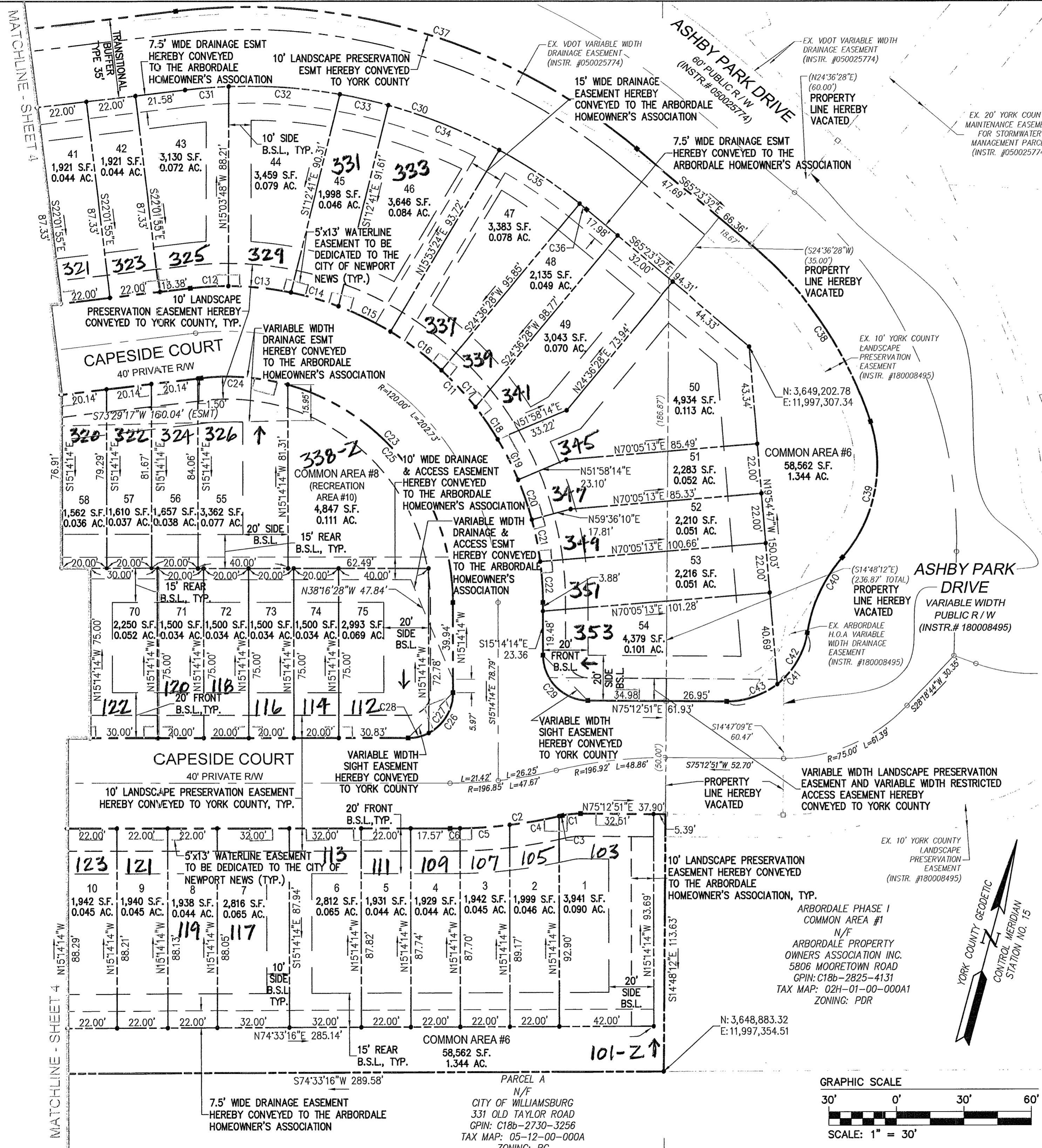
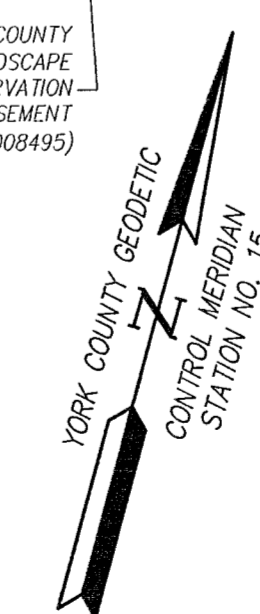
TESTE: *Kristen N. Nelson* CLERK

BY: *Megan Bowen De*

GRAPHIC SCALE



SCALE: 1" = 30'



PARCEL A
N/F
CITY OF WILLIAMSBURG
331 OLD TAYLOR ROAD
GPIN: C18b-2730-3256
TAX MAP: 05-12-00-000A1
ZONING: RC