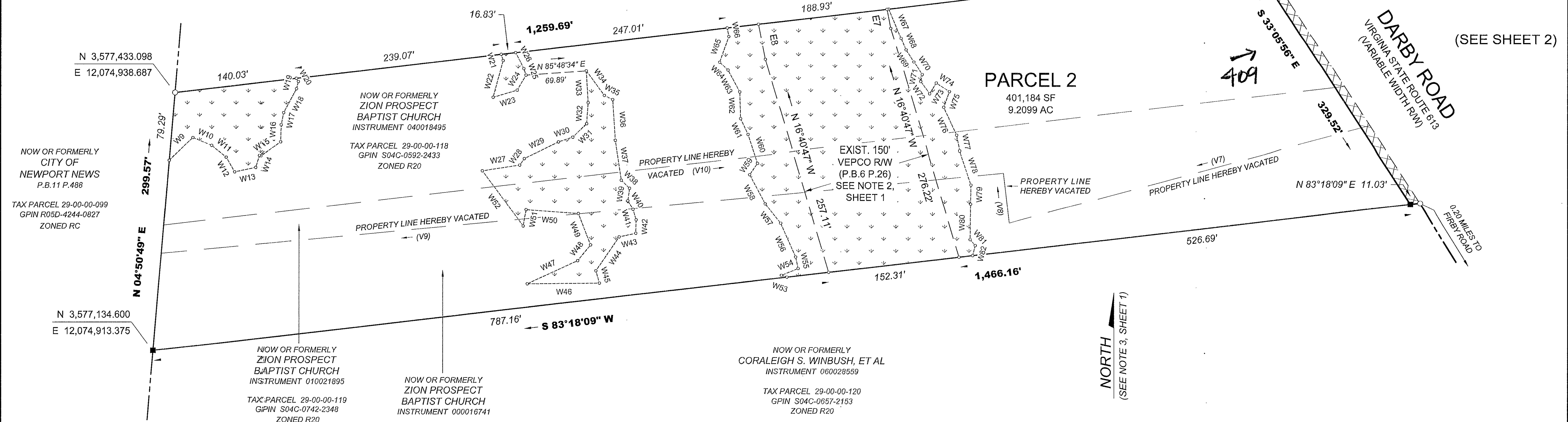


LEGEND

- PROPERTY / EASEMENT LINE SEGMENT
- STEEL PIN / PIPE FOUND
- STEEL PIN SET
- STEEL PIN / PIPE IN CONCRETE FOUND
- STEEL PIN IN CONCRETE SET
- ▭ JURISDICTIONAL WETLANDS U.S. ARMY CORPS OF ENGINEERS PROJECT NO. NAO-2010-0021, POQUOSON RIVER
- ▭ 10' STRIP OF LAND HEREBY DEDICATED TO PUBLIC USE FOR RIGHT-OF-WAY PURPOSES. AREA = 3,275 SF / 0.0752 AC



APPROVED
 YORK COUNTY BOARD OF SUPERVISORS
 BY: *[Signature]* PLAT APPROVING AGENT
 DATE: MARCH 6, 2020

COMMONWEALTH OF VIRGINIA
 COUNTY OF YORK
 IN THE CLERK'S OFFICE OF THE CIRCUIT COURT FOR THE COUNTY OF YORK-POQUOSON VIRGINIA, THE 06th DAY OF March, 2020 THIS PLAT WAS PRESENTED AND ADMITTED TO RECORD AS THE LAW DIRECTS AS INSTRUMENT NUMBER 200004255
 TESTE: **KRISTEN N. NELSON, CLERK**
 CLERK
 BY: *[Signature]*

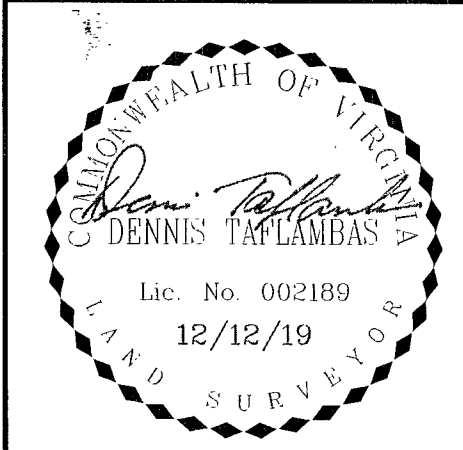
JURISDICTIONAL WETLANDS LINE TABLE		
LINE	BEARING	DISTANCE
W9	S 45°53'53" W	38.30'
W10	N 66°45'39" W	23.62'
W11	N 51°18'25" W	21.71'
W12	N 30°43'42" W	19.31'
W13	S 78°25'04" W	24.88'
W14	S 18°08'31" W	14.17'
W15	S 54°21'19" W	27.99'
W16	S 01°57'03" W	19.73'
W17	S 11°34'45" W	14.33'
W18	S 28°17'29" W	31.39'
W19	S 14°34'27" W	8.62'
W20	N 31°53'19" W	4.54'
W21	N 17°08'32" W	7.61'
W22	N 15°11'58" E	44.24'
W23	S 73°23'29" W	29.17'
W24	S 30°25'30" W	20.40'
W25	S 18°33'02" E	7.98'
W26	S 27°39'23" E	20.84'
W27	N 81°13'53" E	43.77'
W28	N 36°19'47" E	9.31'
W29	N 63°58'58" E	44.05'
W30	N 71°20'16" E	17.40'
W31	N 45°43'45" E	22.33'
W32	N 04°03'38" E	24.31'
W33	N 03°19'04" W	37.06'
W34	S 36°13'04" E	35.35'
W35	S 63°13'36" E	10.87'

JURISDICTIONAL WETLANDS LINE TABLE		
LINE	BEARING	DISTANCE
W36	S 03°40'36" E	47.14'
W37	S 08°36'02" E	46.36'
W38	S 46°19'10" E	13.47'
W39	S 07°51'02" W	14.54'
W40	S 31°29'18" E	11.48'
W41	S 16°25'49" E	12.72'
W42	S 01°29'18" W	15.58'
W43	S 77°29'21" W	19.83'
W44	S 34°14'15" W	47.83'
W45	S 15°53'59" E	14.82'
W46	S 89°18'01" W	83.50'
W47	N 65°11'32" E	64.23'
W48	N 39°04'45" E	23.73'
W49	N 21°17'28" W	39.16'
W50	N 85°56'50" W	60.58'
W51	S 10°12'28" W	19.17'
W52	N 36°44'17" W	79.25'
W53	N 71°54'28" W	6.62'
W54	N 67°40'18" E	20.85'
W55	N 12°06'28" W	13.71'
W56	N 23°43'30" W	42.96'
W57	N 39°27'02" W	28.81'
W58	N 28°14'07" W	38.12'
W59	N 34°52'51" E	15.85'
W60	N 18°09'31" W	35.13'
W61	N 25°14'53" W	20.24'
W62	N 01°48'05" W	30.87'

JURISDICTIONAL WETLANDS LINE TABLE		
LINE	BEARING	DISTANCE
W63	N 28°12'03" W	28.89'
W64	N 47°06'42" W	13.30'
W65	N 19°40'26" E	31.56'
W66	N 10°30'23" W	10.04'
W67	N 22°48'51" W	37.19'
W68	N 22°48'51" W	14.82'
W69	N 32°26'13" W	16.89'
W70	N 32°26'13" W	17.99'
W71	N 11°53'29" E	8.09'
W72	N 36°01'59" W	17.68'
W73	S 31°19'46" W	14.72'
W74	N 56°28'03" W	18.32'
W75	N 19°56'14" E	19.34'
W76	N 25°04'14" W	35.46'

EXISTING 150' VEPCO RIGHT-OF-WAY EASEMENT LINE TABLE		
LINE	BEARING	DISTANCE
W77	N 11°19'29" W	17.90'
W78	N 18°42'26" W	40.69'
W79	N 01°01'22" E	22.11'
W80	N 00°44'32" E	40.88'
W81	N 40°50'35" W	9.15'
W82	N 14°27'32" E	12.10'

VACATED PROPERTY LINE TABLE		
LINE	BEARING	DISTANCE
V7	S 75°04'39" W	433.02'
V8	N 06°41'51" W	57.70'
V9	S 84°29'09" W	979.40'
V10	N 83°18'09" E	1,377.25'



DKT Associates
 LAND SURVEYORS
 1100 GRANBY STREET
 SUITE 100
 NORFOLK, VA 23510
 DKTASSOCIATES.COM TEL (757) 588-5888

GRAPHIC SCALE 1" = 80'
 0 40 80 160 320

DATE	DESCRIPTION
12/12/19	REVISED PER COUNTY / CLIENT COMMENTS
10/23/19	REVISED PER COUNTY / CLIENT COMMENTS
01/17/19	REVISED PER COUNTY / CLIENT COMMENTS
02/27/18	REVISED PER COUNTY / CLIENT COMMENTS
08/04/17	REVISED PER COUNTY / CLIENT COMMENTS
03/24/17	REVISED PER COUNTY / CLIENT COMMENTS

PROPERTY LINE VACATION, RIGHT-OF-WAY DEDICATION AND EASEMENT DEDICATION PLAT OF

PROPERTIES OF ZION PROSPECT BAPTIST CHURCH

YORKTOWN, VIRGINIA DECEMBER 12, 2019

BETHEL DISTRICT YORK COUNTY, VIRGINIA

JOB:	5361	SCALE:	1" = 80'
FB:	83	SIZE:	ARCH C
DRAWN:	JSO	REVISED:	12/12/19
CHECK:	DT	SHEET:	3 OF 3