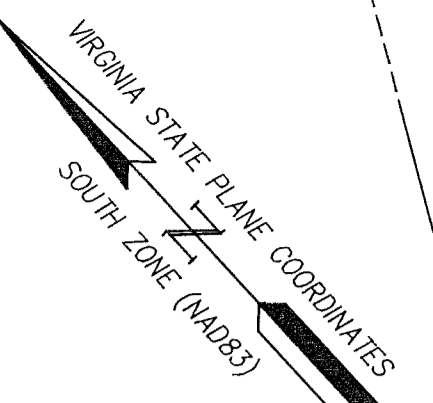
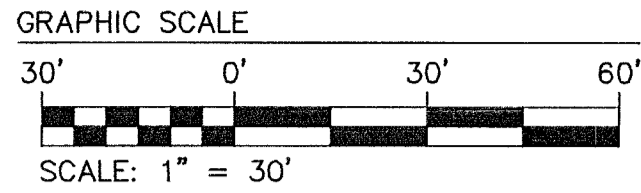


THE DIGGES COMPANY
1540 PENNIMAN ROAD
(INSTR. #040011528)
GPIN: H14d-2530-0680
TAX MAP #11-00-00-095
ZONED IL



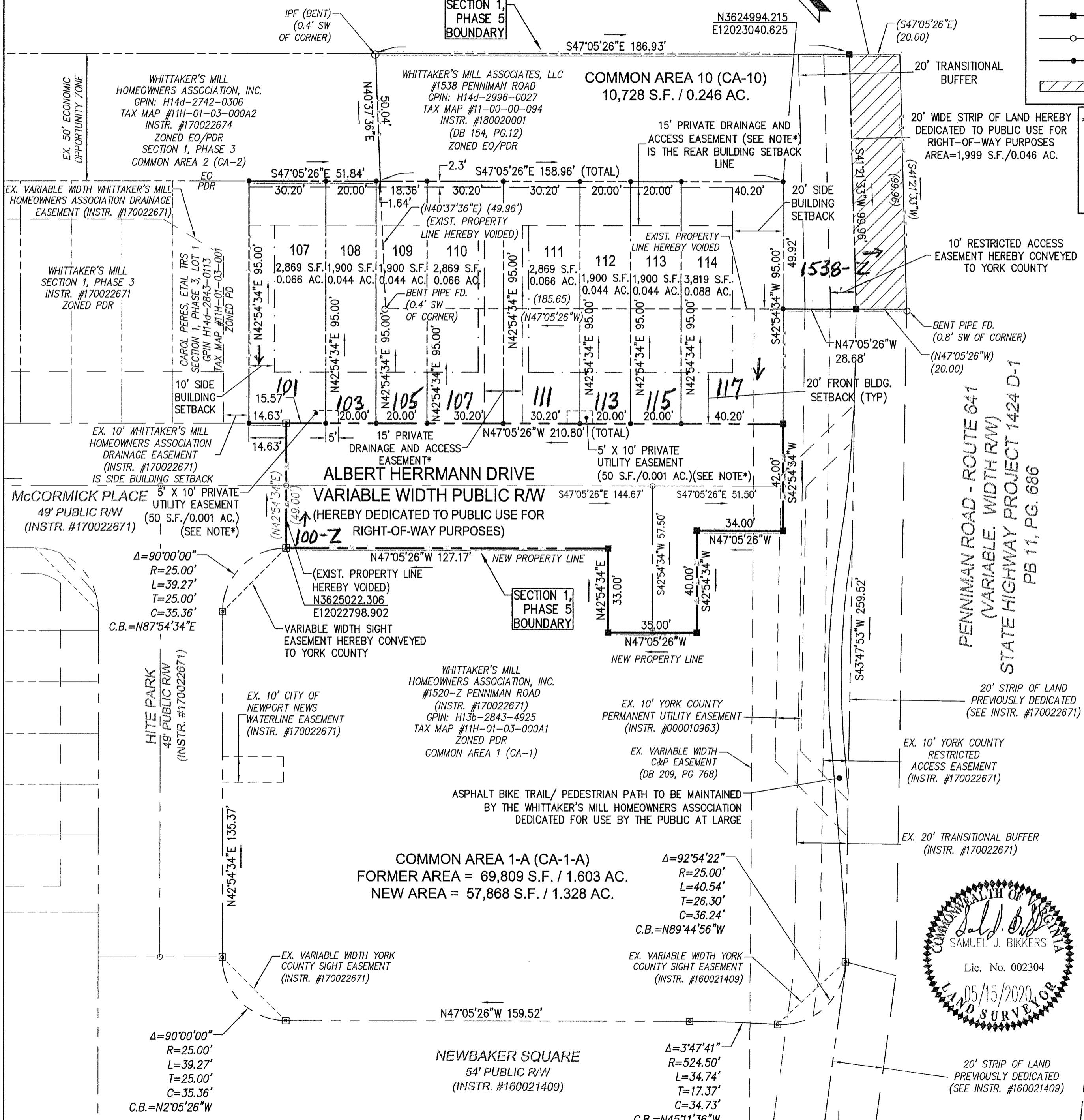
LEGEND

- PROPERTY LINE
- RIGHT-OF-WAY LINE
- BUILDING SETBACK LINE
- PRIVATE UTILITY EASEMENT
- PRIVATE DRAINAGE EASEMENT
- CMF
- MONUMENT FOUND
- MONUMENT SET (PER SEC. 1, PH. 3 PLAT)
- MONUMENT SET
- PIPE FOUND
- IRON ROD SET
- EXISTING RIGHT-OF-WAY HEREBY DEDICATED TO PUBLIC USE FOR RIGHT-OF-WAY PURPOSES

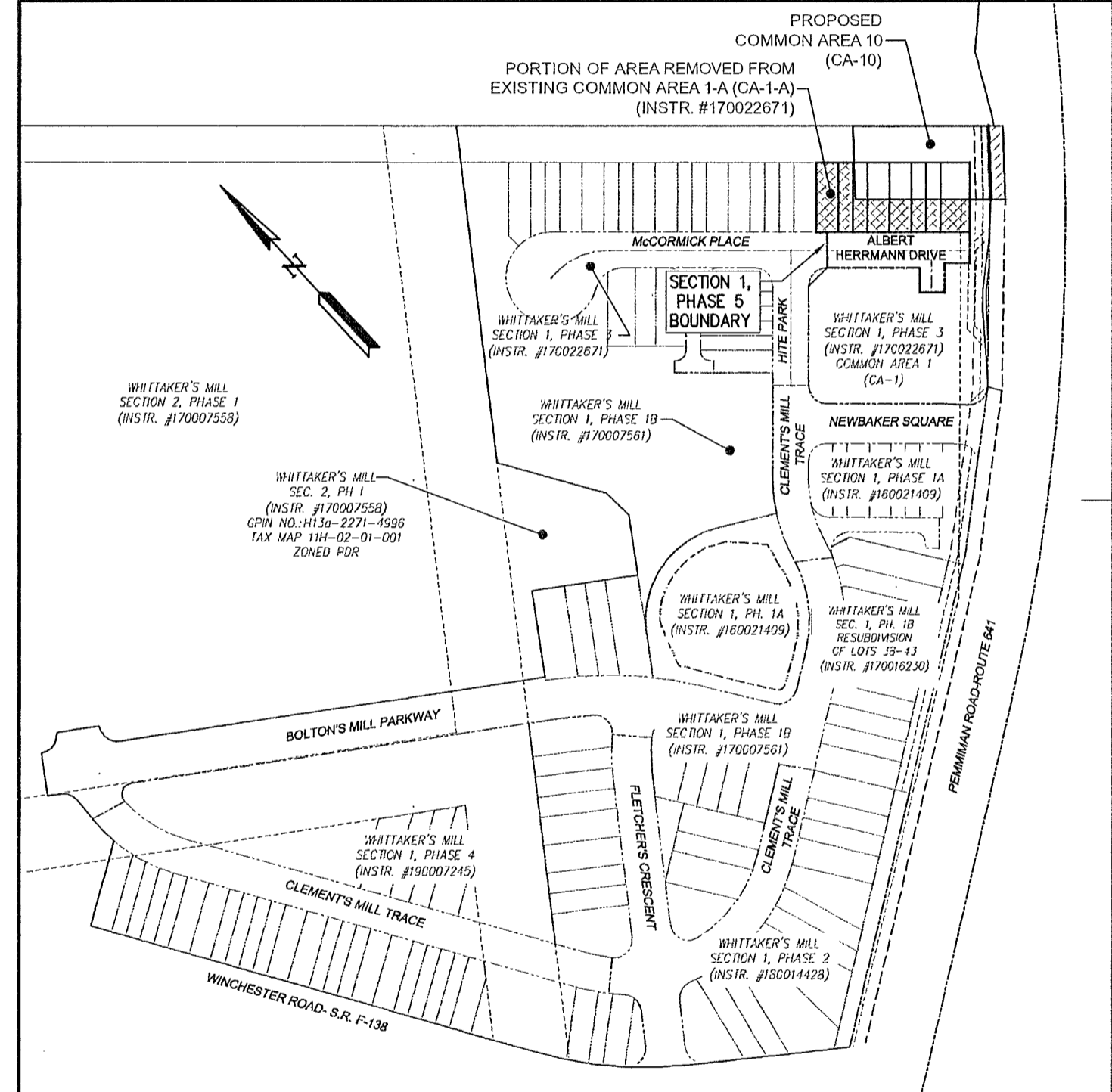
RESUBDIVISION OF WHITTAKER'S MILL SINGLE FAMILY TOWNHOMES SECTION 1, PHASE 3 AND PLAT OF SUBDIVISION OF WHITTAKER'S MILL SINGLE FAMILY TOWNHOMES SECTION 1, PHASE 5

BRUTON DISTRICT COUNTY OF YORK VIRGINIA

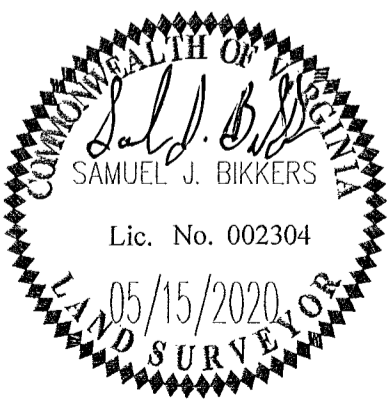
Date: 10-29-19 Scale: 1"=30' Proj. No.: 7804-08 Proj. Contacts: TRS/SJB



*NOTE: ALL PRIVATE UTILITY EASEMENTS AND PRIVATE DRAINAGE EASEMENTS AND PRIVATE ACCESS EASEMENTS HEREBY CONVEYED TO THE WHITTAKER'S MILL HOMEOWNERS ASSOCIATION



KEY MAP SCALE: 1"=200'



APPROVED:
YORK COUNTY BOARD OF SUPERVISORS
BY: *Janet Kasal* PLAT APPROVING AGENT
DATE: JUNE 4, 2020

STATE OF VIRGINIA
COUNTY OF YORK

IN THE CLERK'S OFFICE OF THE CIRCUIT COURT FOR THE COUNTY OF YORK—POQUOSON THE 5th DAY OF June, 2020

THIS MAP WAS PRESENTED AND ADMITTED TO RECORD AS THE LAW DIRECTS, AS INSTRUMENT NO. 200009006

TESTE: KRISTEN N. NELSON, CLERK CLERK
BY: *Megan Bauer* OC

20 JUN 5 2020