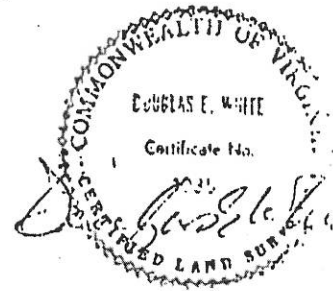
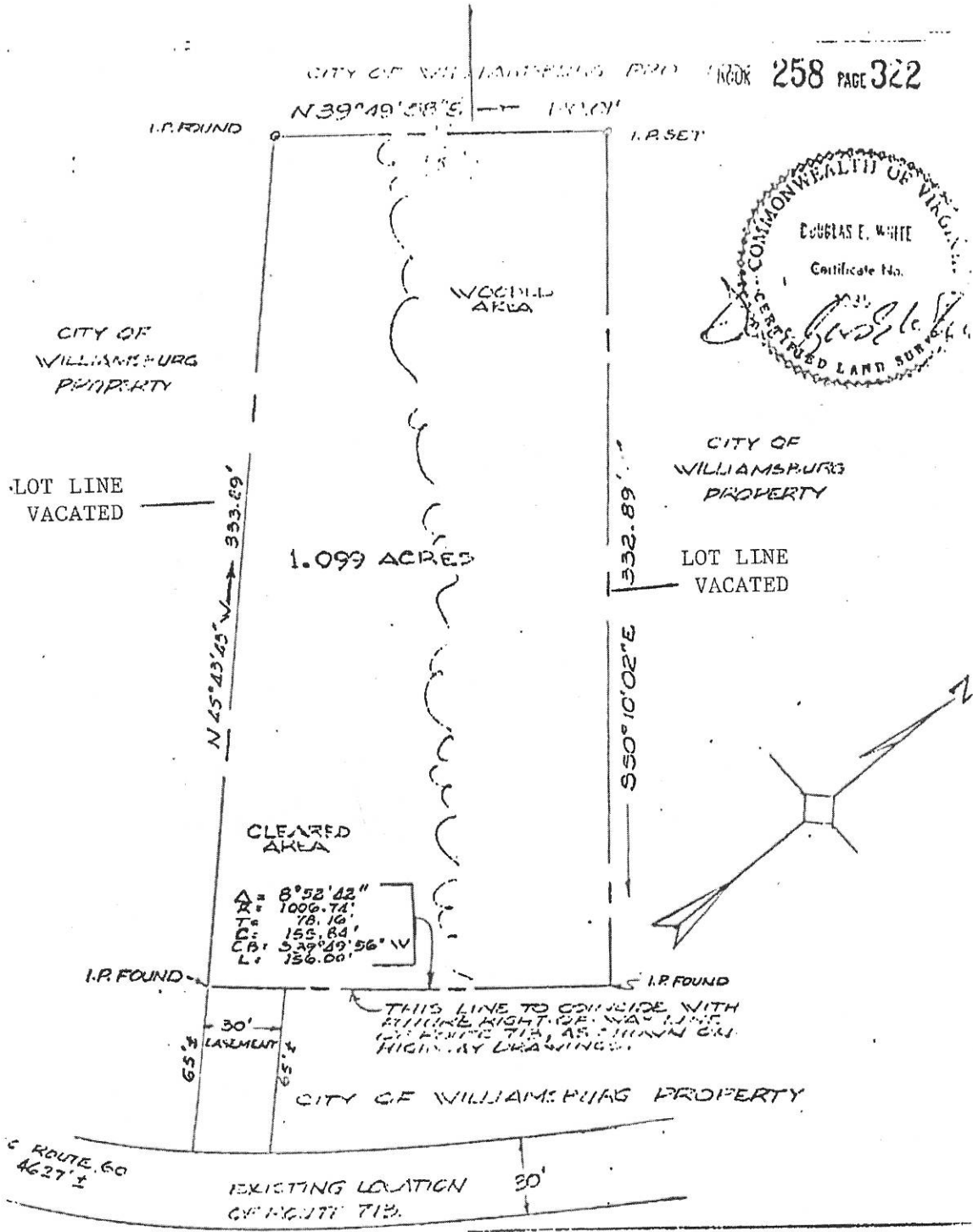


LOT LINE VACATED

CITY OF WILLIAMSBURG PRO BOOK 258 PAGE 322



$\Delta = 8^{\circ}52'42''$
 $R = 1000.74'$
 $T = 78.16'$
 $D = 155.84'$
 $CB = 539^{\circ}49'56''W$
 $L = 156.00'$

THIS LINE TO CONFORM WITH
 PLUMB RIGHT OF WAY LINE
 OF ROUTE 712, AS SHOWN ON
 HIGHWAY DRAWINGS.

PLAT OF PROPERTY TO BE CONVEYED
 TO THE WILLIAMSBURG S.P.C.A.
 FROM THE CITY OF WILLIAMSBURG.

YORK COUNTY, VA. BRUTON DIST.
 SCALE 1" = 50' JULY 31, 1975.

180 108
 801
 12.5

6-AC