

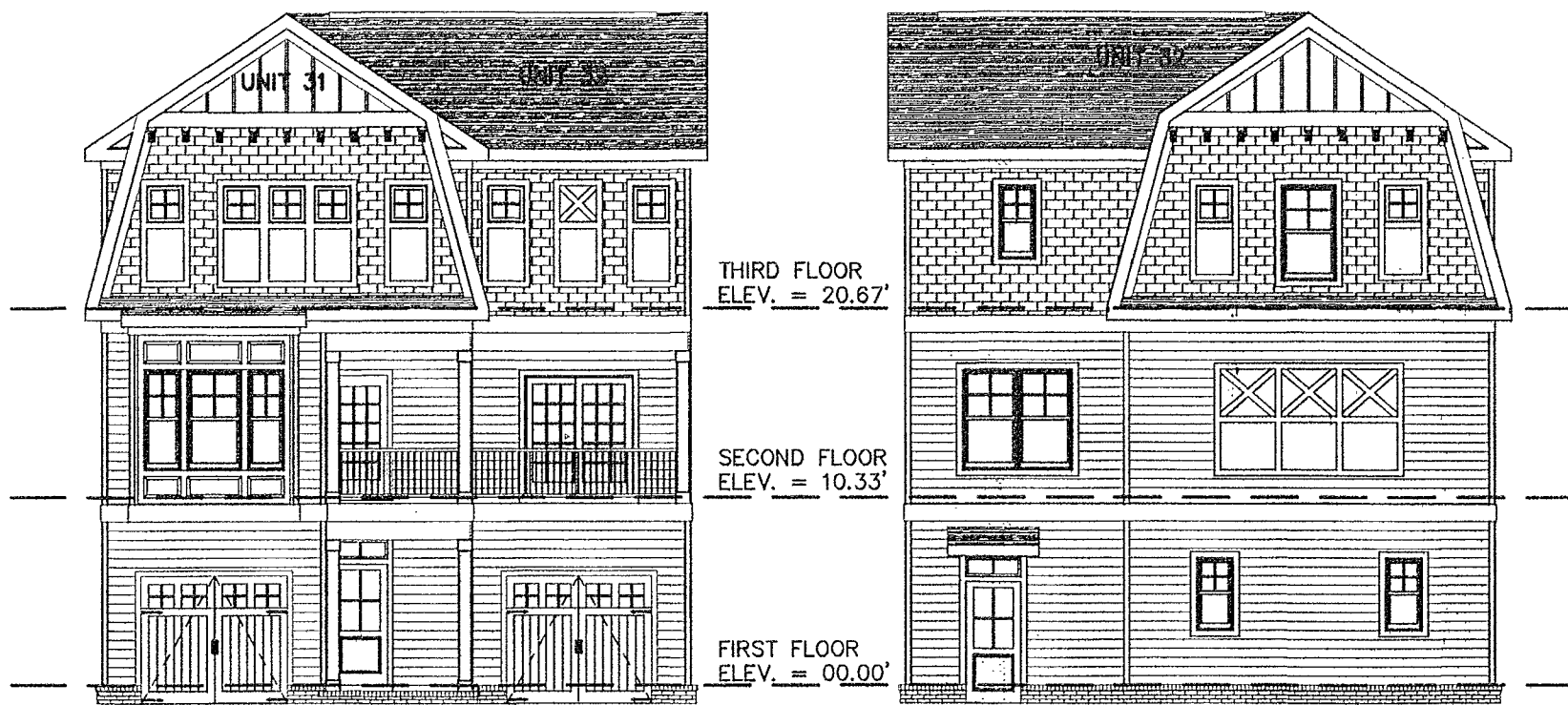
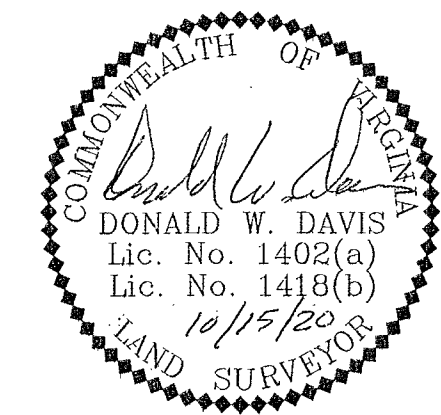
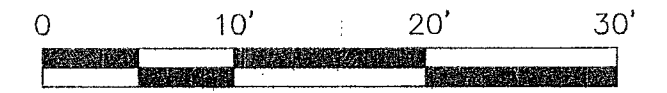
PHASE SIXTEEN – BUILDING TWENTY FIVE DETAIL
(UNITS 31 & 32)

PHASE SEVENTEEN – BUILDING TWENTY SIX DETAIL
(UNITS 33 & 34)

CONDOMINIUM PLAT
OF
PHASE SIXTEEN
AND
PHASE SEVENTEEN
MAINSTAY AT
COMMONWEALTH GREEN
SECTION TWO

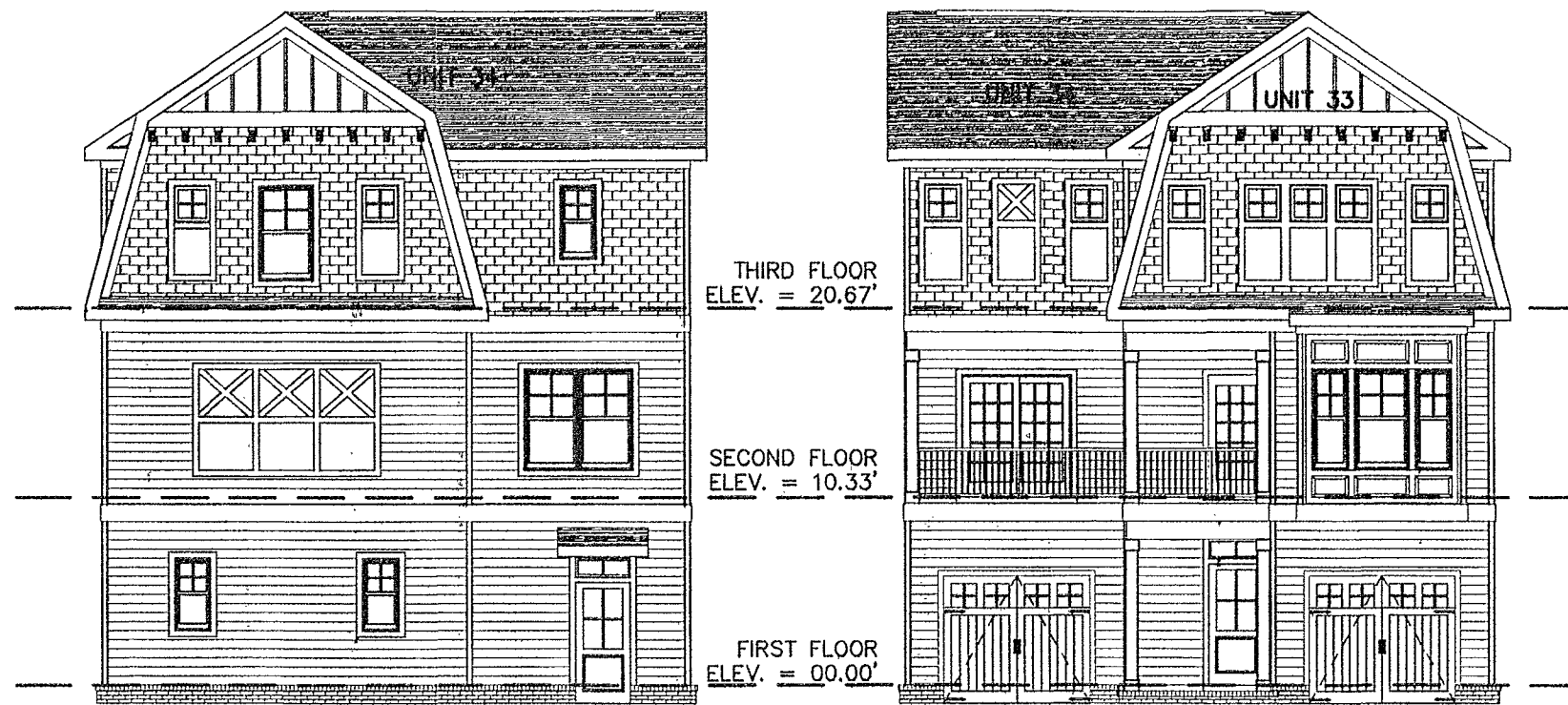
BETHEL MAGISTERIAL DISTRICT
COUNTY OF YORK, VIRGINIA
SCALE: 1"=10' DATE: OCTOBER 15, 2020
SHEET 6 OF 6

DAVIS & ASSOCIATES, P.C.
LAND SURVEYORS AND PLANNERS
3630 GEORGE WASHINGTON MEMORIAL HIGHWAY
YORKTOWN, VIRGINIA 23693
(757)867-8583



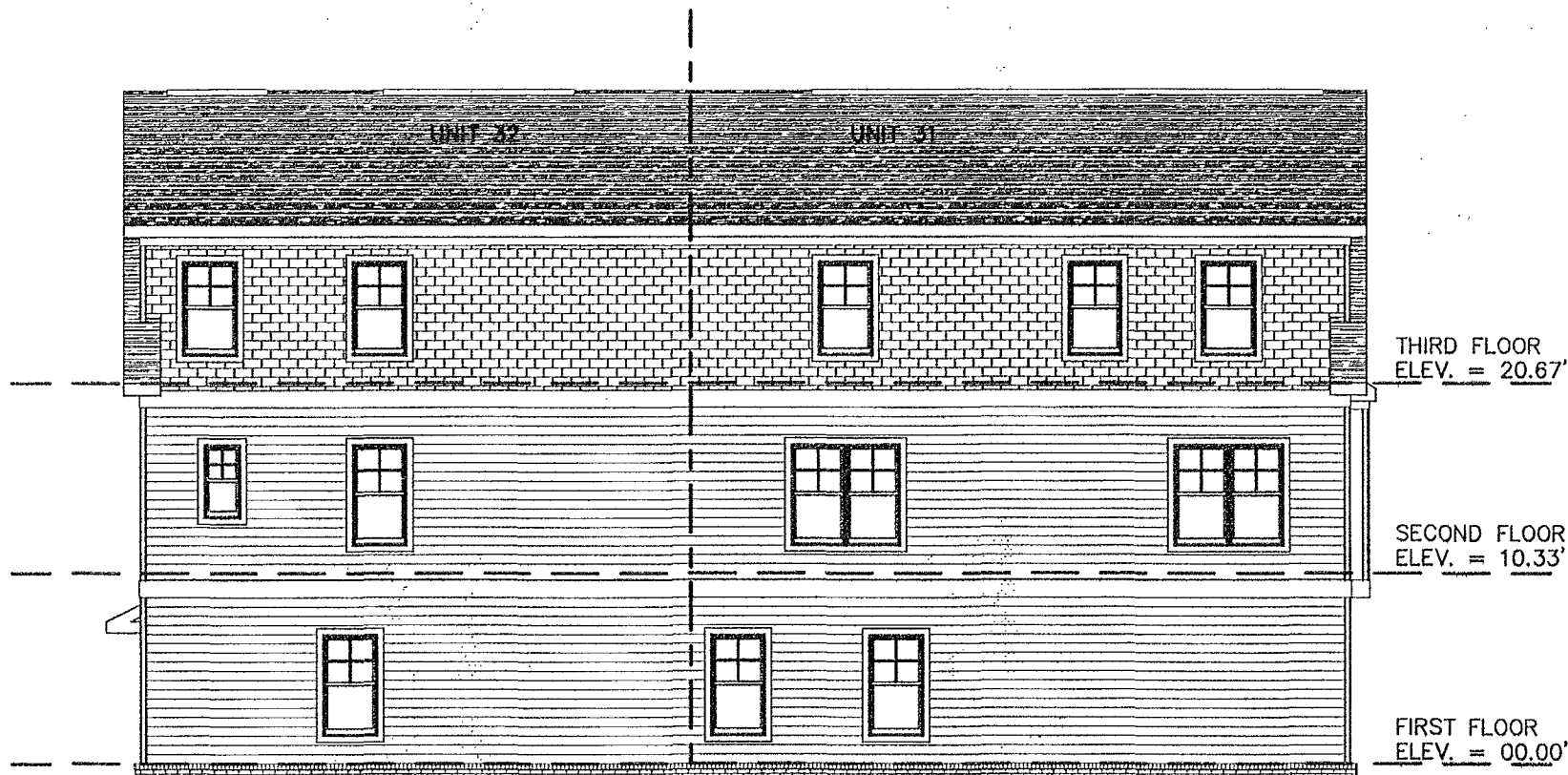
FRONT ELEVATION
(PRIVATE LANE SIDE)

REAR ELEVATION
(PUBLIC STREET SIDE)

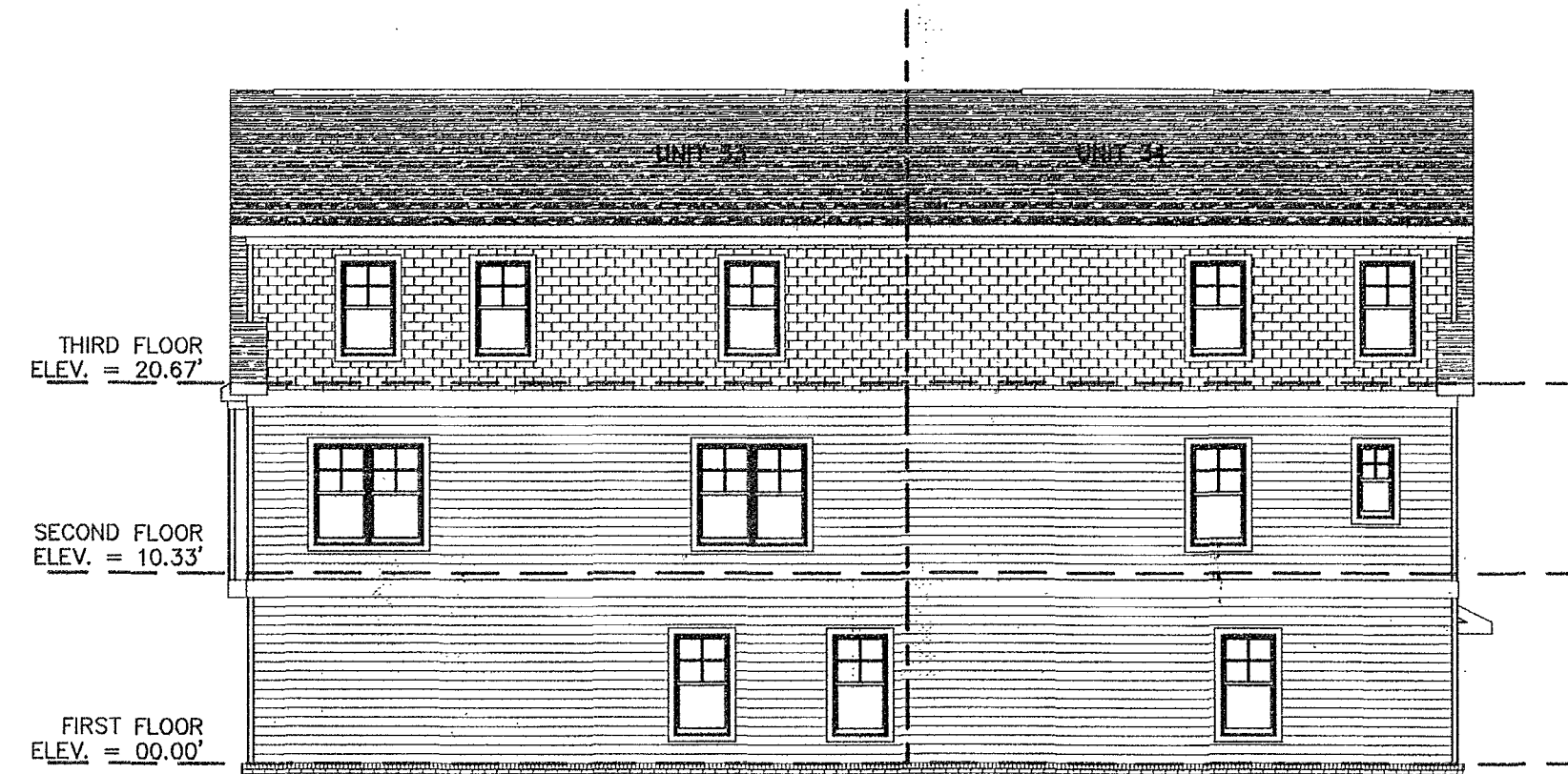


REAR ELEVATION
(PUBLIC STREET SIDE)

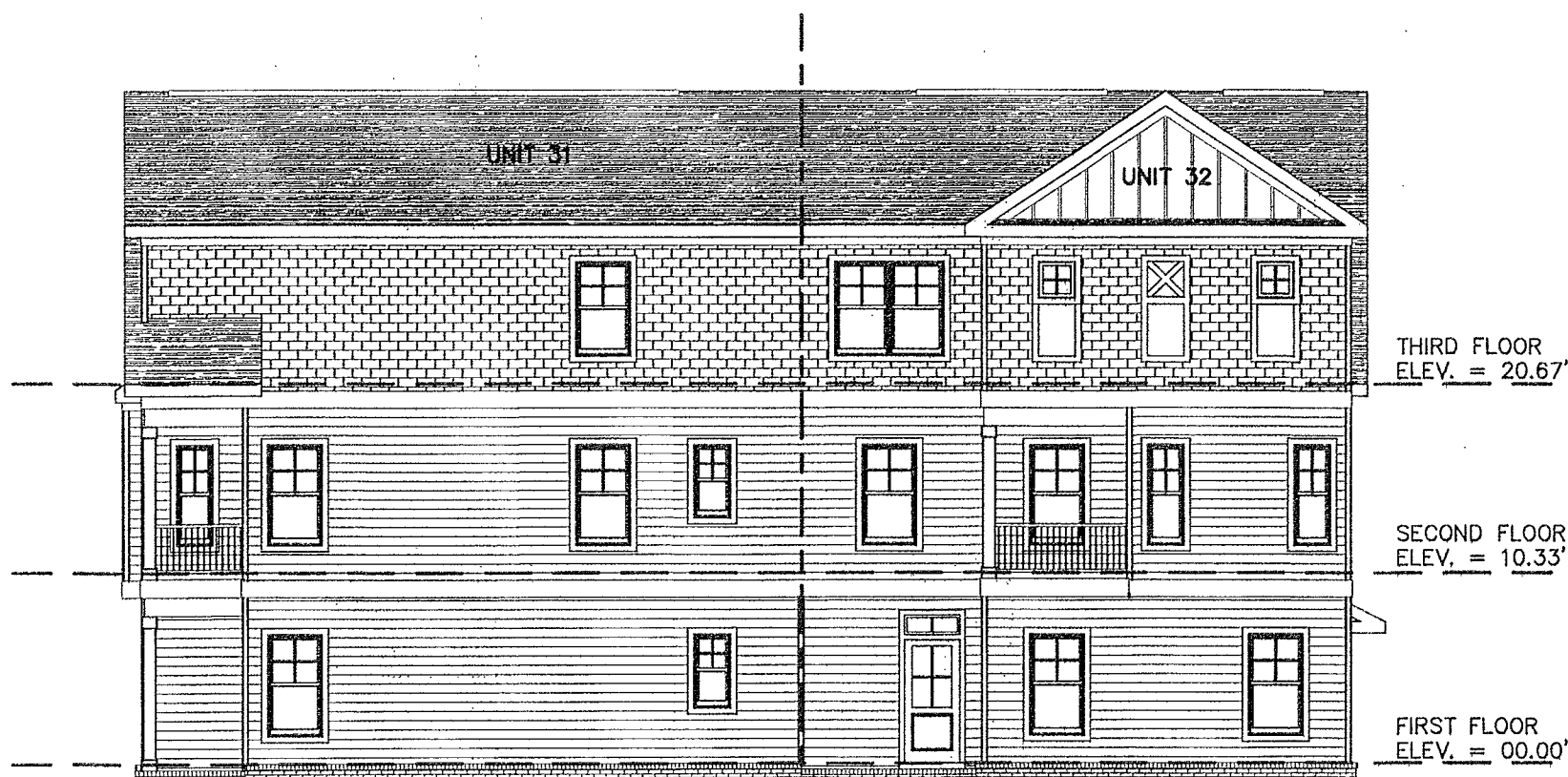
FRONT ELEVATION
(PRIVATE LANE SIDE)



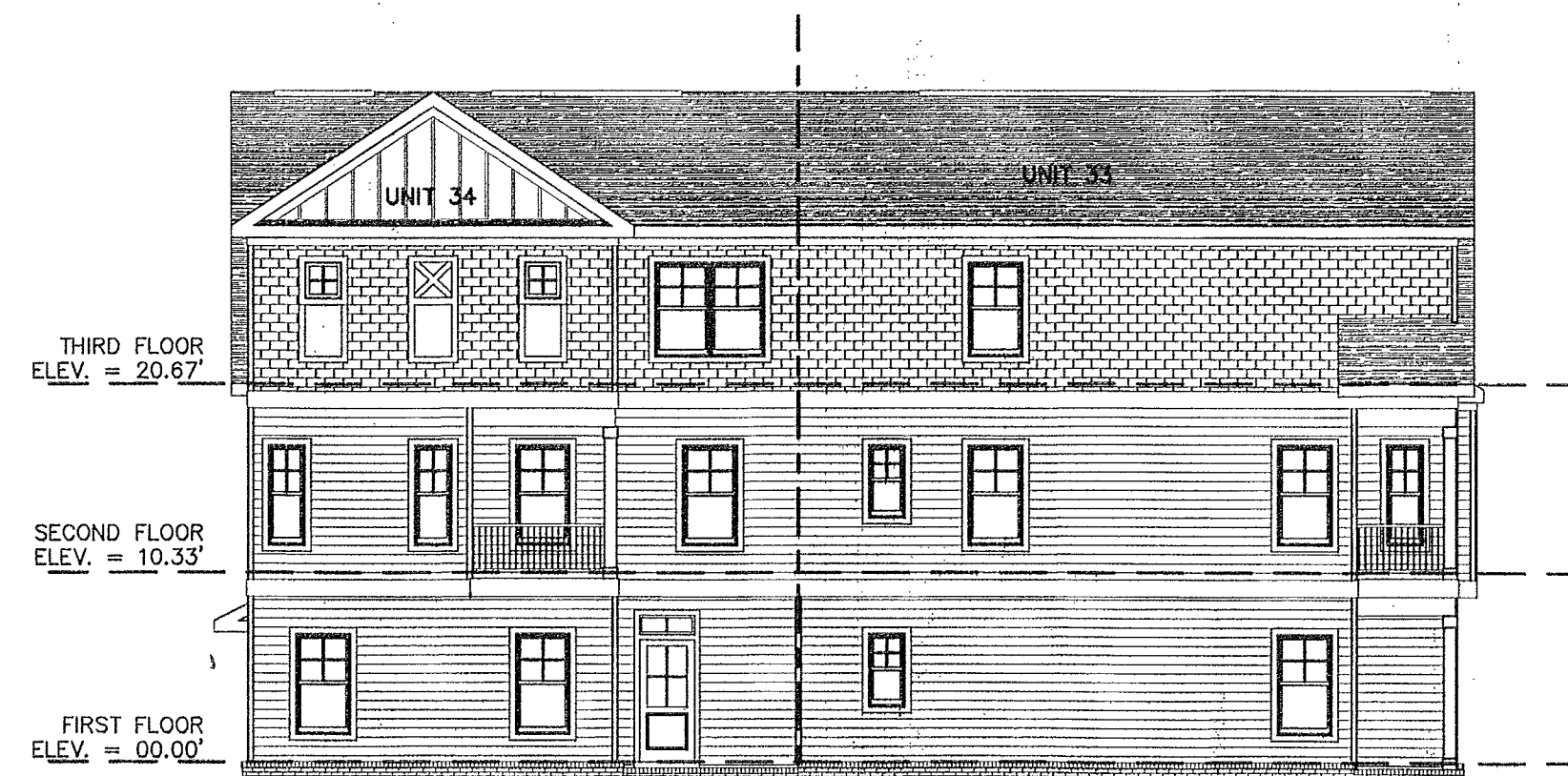
LEFT SIDE ELEVATION



RIGHT SIDE ELEVATION



RIGHT SIDE ELEVATION



LEFT SIDE ELEVATION

APPROVED
YORK COUNTY BOARD OF SUPERVISORS
BY: Steven Kassel
PLAT APPROVING AGENT
DATE: NOVEMBER 19, 2020

STATE OF VIRGINIA
COUNTY OF YORK
IN THE CLERK'S OFFICE OF THE YORK –
POQUOSON CIRCUIT COURT THIS 20th
DAY OF November 2020, THIS MAP WAS
PRESENTED AND ADMITTED TO RECORD AS
THE LAW DIRECTS AS INSTRUMENT #200020615
TESTE: Thomas M. Nelson, CLERK
CLERK
BY: Antonio Weber, Esq.