

NOTES:

1. THE PURPOSE OF THIS SHEET IS TO SHOW THE PRIVATE UTILITY AND ACCESS EASEMENTS RECORDED IN INSTRUMENT NO. 190009779 AND TO VACATE OR RELOCATE THEM AS NECESSARY AS TO PARCELS 1, 3 AND 6 ONLY.
2. REFER TO THE "KELTON STATION, FIRST AMENDMENT TO DECLARATION OF EASEMENTS, MAINTENANCE AGREEMENT AND COVENANT TO SHARE COSTS" (RECORDED CONCURRENTLY WITH THE "PLAT OF RESUBDIVISION, KELTON STATION, PARCEL 3 AND PARCEL 6") REGARDING THE RELOCATION OF EXISTING PRIVATE EASEMENTS, VACATION OF EXISTING PRIVATE EASEMENTS, AND NEW PRIVATE EASEMENTS, AS DEPICTED ON SHEET 4 OF 4.

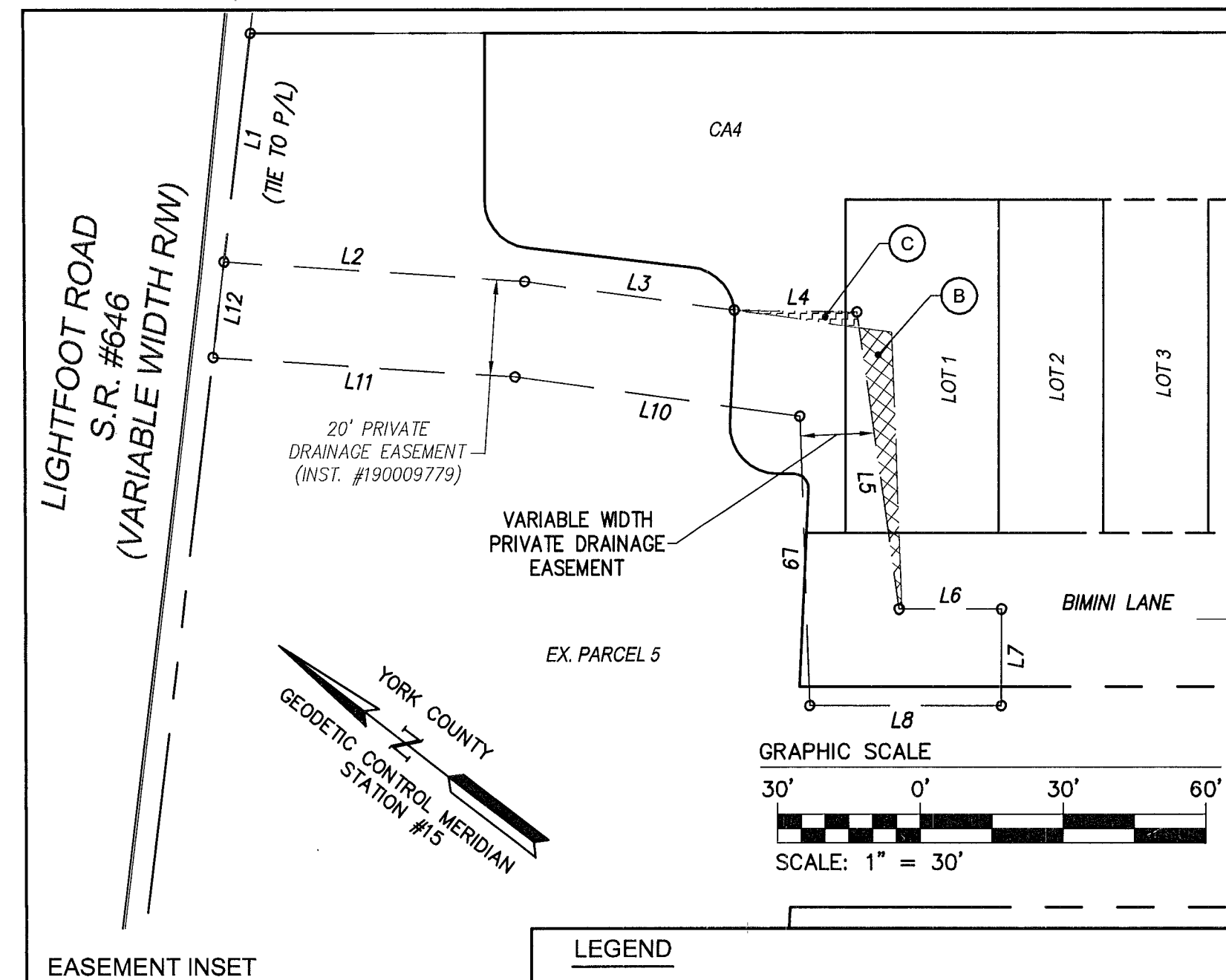
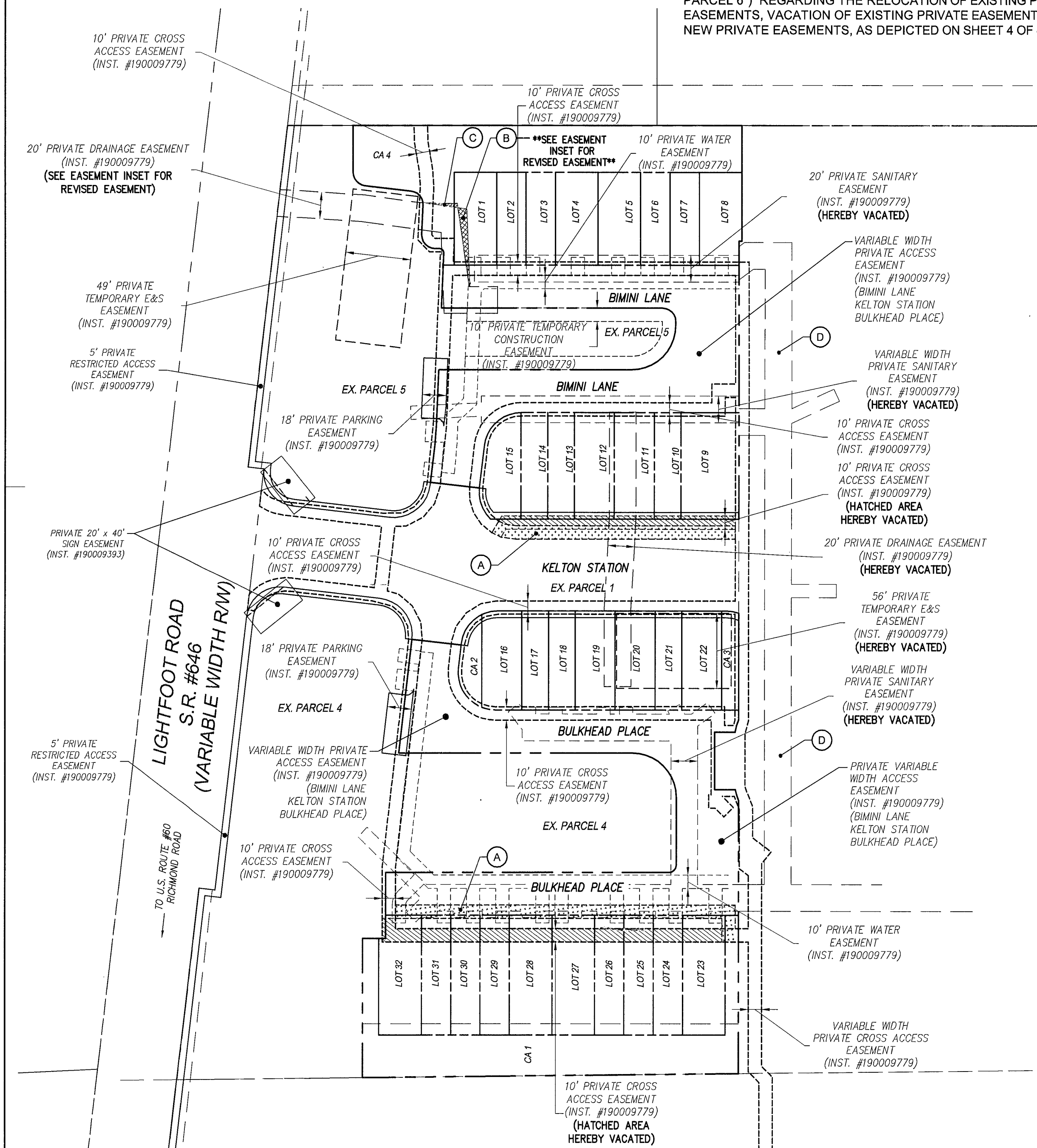


PLAT OF RESUBDIVISION
KELTON STATION
PARCEL 3 AND PARCEL 6

BRUTON DISTRICT YORK COUNTY VIRGINIA
Date: 06/15/2020 Scale: 1"=60' Proj. No.: W10528-02 Proj. Contacts: SJB/JFS

AES
CONSULTING ENGINEERS
5248 Olde Towne Road, Suite 1
Williamsburg, Virginia 23188
Phone: (757) 253-0040
Fax: (757) 220-8994
www.aesva.com

SHEET 4 OF 4



EASEMENT INSET

LEGEND

- (A) [Hatched pattern] RELOCATED 10' PRIVATE CROSS ACCESS EASEMENT CENTERED ON THE SIDEWALK
- (B) [Cross-hatched pattern] A PORTION OF PRIVATE DRAINAGE EASEMENT HEREBY VACATED
- (C) [Diagonal line pattern] ADDITIONAL PRIVATE DRAINAGE EASEMENT
- (D) [Dotted pattern] 20' UTILITY EASEMENT TO BE CONVEYED TO YORK COUNTY PER "PLAT SHOWING YORK COUNTY UTILITY EASEMENTS, BRUTON DISTRICT, YORK COUNTY, VIRGINIA" DATED SEPTEMBER 18, 2020 (TO BE RECORDED BY SEPARATE INSTRUMENT)

LINE	BEARING	LENGTH
L1	S59°03'43"W	48.11'
L2	S33°46'49"E	63.14'
L3	S29°45'23"E	44.34'
L4	S36°42'20"E	25.77'
L5	S44°16'07"W	62.81'
L6	S37°33'26"E	21.39'
L7	S52°26'37"W	20.00'
L8	N37°33'23"W	40.16'
L9	N50°21'31"E	60.53'
L10	N29°45'23"W	60.23'
L11	N33°46'49"W	63.43'
L12	N59°03'43"E	20.02'

APPROVED:
BY YORK COUNTY BOARD OF SUPERVISORS
BY: Sharon Kassel PLAT APPROVING AGENT
DATE: DECEMBER 22, 2020
STATE OF VIRGINIA
COUNTY OF YORK
IN THE CLERK'S OFFICE OF THE CIRCUIT COURT FOR THE COUNTY OF YORK-POQUOSON, THE 25th DAY OF December, 2020
THIS MAP WAS PRESENTED AND ADMITTED TO RECORD AS THE LAW DIRECTS, AS INSTRUMENT NO. 200022939
TESTE: Kristen N. Nelson CLERK
BY: Melissa Bowen

S:\038\10528 - Lightfoot Apartments\Survey\Plan\Plan\W10528-02 Town Ship.plt SHEET 4.dwg, 12/10/2020, 3:37:14 PM, bmk.dwg