

LINE	BEARING	LENGTH
L1	N66°04'12"W	299.21'
L2	N46°31'25"W	64.86'
L3	N26°31'34"W	119.28'
L4	N11°02'08"W	196.39'
L5	N51°00'36"E	81.51'
L6	N20°30'46"E	20.05'
L7	N17°59'20"E	32.07'
L8	N1°42'04"E	296.85'
L9	S79°56'04"E	318.29'
L10	N44°53'22"E	175.59'
L11	N6°38'30"E	241.52'
L12	N22°05'36"E	282.75'
L13	N10°00'55"E	281.89'
L14	N17°19'44"W	374.43'
L15	N36°22'29"E	91.21'

LINE	BEARING	LENGTH
L16	S69°33'44"E	93.40'
L17	S26°29'28"E	169.33'
L18	S6°54'16"W	219.92'
L19	S18°21'03"E	275.88'
L20	S23°42'00"E	169.70'
L21	S75°16'05"E	266.67'
L22	S40°19'12"E	393.59'
L23	N89°19'59"E	125.19'
L24	S14°44'21"E	1559.43'
L25	S14°34'56"E	375.43'
L26	S14°47'06"E	192.93'
L27	S75°02'55"W	200.00'
L28	S14°45'54"E	546.17'
L29	S14°45'54"E	10.13'
L30	S66°00'50"W	42.88'

LINE	BEARING	LENGTH
L31	N27°58'39"W	36.21'
L32	N27°48'10"W	40.54'
L33	N27°34'38"W	20.55'
L34	S54°51'26"W	163.32'
L35	N46°25'05"W	221.34'
L36	N32°53'57"E	164.48'
L37	S44°27'19"W	144.16'
L38	N46°25'05"W	212.28'
L39	N43°35'11"E	18.40'
L40	N43°41'50"E	50.00'
L41	N85°52'39"E	185.69'
L42	N1°20'23"E	65.98'
L43	N0°38'28"W	58.90'
L44	N6°22'42"W	62.74'
L45	N9°30'39"W	21.26'

LINE	BEARING	LENGTH
L46	N13°17'36"W	304.16'
L47	S89°47'10"E	4.88'
L48	N26°52'45"E	50.00'
L49	N26°52'50"E	94.31'
L50	N63°07'08"W	32.58'
L51	N79°03'51"W	120.86'
L52	S0°12'55"W	97.47'
L53	N0°53'06"W	5.00'
L54	S89°06'54"W	50.00'
L55	S0°53'06"E	24.33'
L56	S87°34'30"W	8.06'
L57	N6°21'15"W	606.07'
L58	S88°25'51"W	177.78'
L59	N1°34'09"W	88.91'
L60	S88°25'51"W	50.00'

LINE	BEARING	LENGTH
L61	S1°34'09"E	88.21'
L62	S88°25'51"W	221.32'
L63	S60°58'48"W	143.01'

1 N/F HAMPTON ROADS SANITATION DISTRICT D.B. 283, PG. 610 TAX ID: 30-00-00-182C GPIN: T04d-3038-1547 ZONED RR

2 N/F ROBERT CAROL EMERSON, ET UX D.B. 276, PG. 428 P.B. 5, PG. 29 TAX ID: 30-00-00-183A GPIN: T04d-3318-1713 ZONED RR

3 N/F ROBERT CAROL EMERSON, ET UX INSTR. #00007475 P.B. 5, PG. 29 TAX ID: 30-00-00-183 GPIN: T04d-3316-1939 ZONED RR

4 N/F McDONALD BLUFFS HOMEOWNERS' ASSOCIATION, INC. INSTR. #020003640 COMMON AREA 2 McDONALD BLUFFS SUBDIVISION P.B. 13, PG. 17 TAX ID: 30-97-00-000A2 GPIN: T04a-1120-3533 ZONED R20

5 LOT 6 McDONALD BLUFFS SUBDIVISION P.B. 13, PG. 17 TAX ID: 30-97-00-006 GPIN: T04a-1100-3662 ZONED R20

PLAT OF SUBDIVISION
SMITH FARM ESTATES
PHASE 1B

BETHEL DISTRICT
YORK COUNTY, VIRGINIA

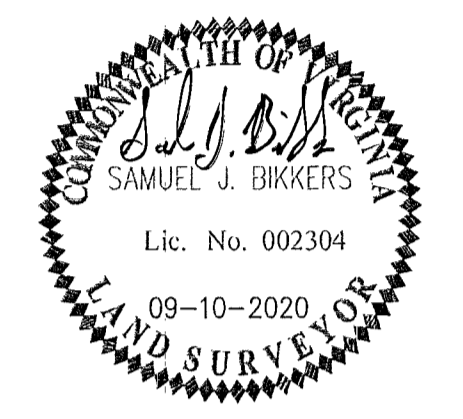
Date: 09/10/2020 Scale: 1"=200' Proj. No.: W10415-02 Proj. Contacts: SJB / PET

AES
CONSULTING ENGINEERS

5248 Old Towne Road, Suite 1
Williamsburg, Virginia 23188
Phone: (757) 253-0040
Fax: (757) 220-8994
www.aesva.com

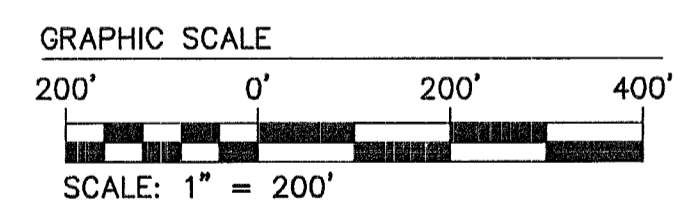
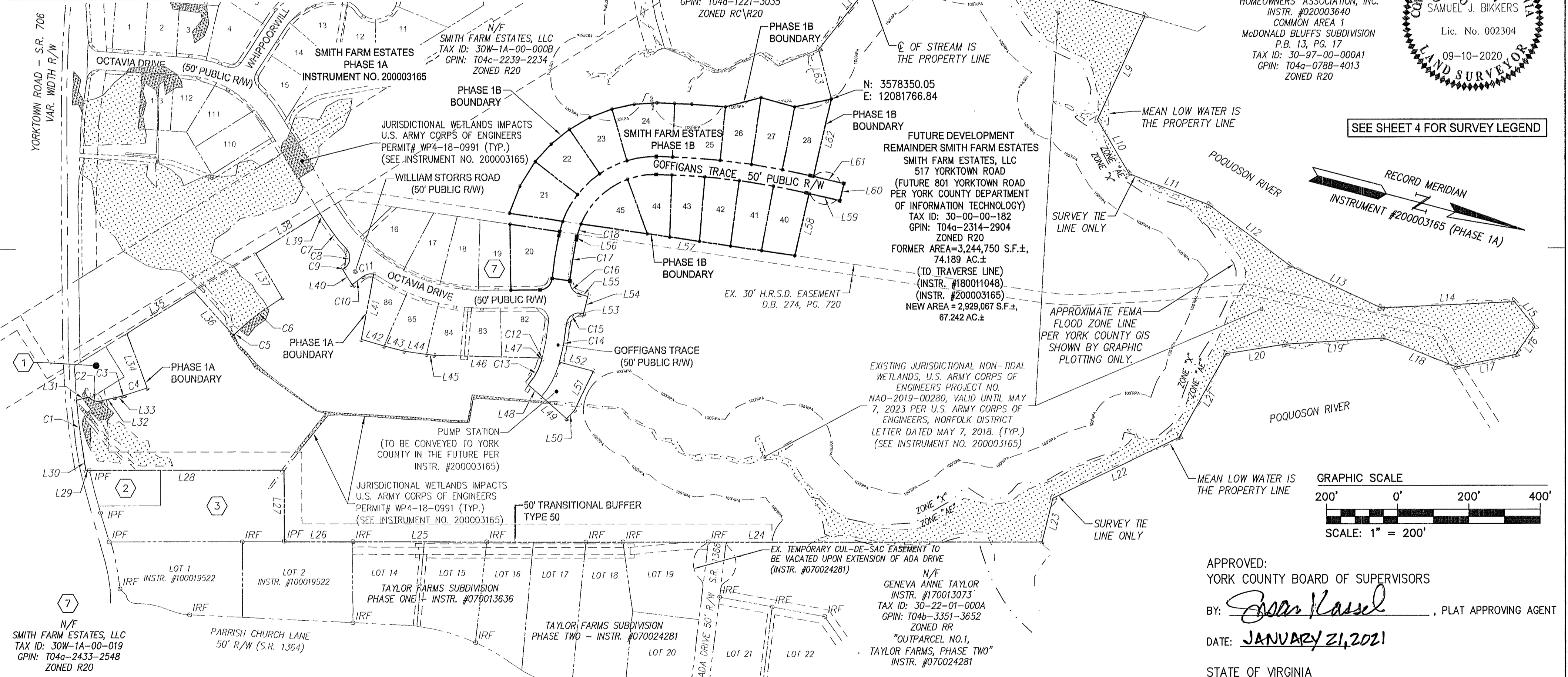
Hampton Roads | Central Virginia | Middle Peninsula

SHEET 2 OF 4



6 N/F McDONALD BLUFFS HOMEOWNERS' ASSOCIATION, INC. INSTR. #020003640 COMMON AREA 1 McDONALD BLUFFS SUBDIVISION P.B. 13, PG. 17 TAX ID: 30-97-00-000A1 GPIN: T04a-0788-4013 ZONED R20

SEE SHEET 4 FOR SURVEY LEGEND



CURVE #	DELTA	RADIUS	LENGTH	TANGENT	CHORD	CHORD BEARING
C1	4°14'45"	2085.00'	154.51'	77.29'	154.47'	S68°08'12"W
C2	63°44'02"	33.00'	36.71'	20.51'	34.84'	N4°03'51"E
C3	2°28'07"	200.00'	8.62'	4.31'	8.62'	N28°48'42"W
C4	5°05'48"	745.00'	66.27'	33.16'	66.25'	N32°35'40"W
C5	1°00'20"	745.00'	13.08'	6.54'	13.08'	N57°36'13"W
C6	12°33'42"	725.00'	158.95'	79.80'	158.63'	N51°49'32"W

CURVE #	DELTA	RADIUS	LENGTH	TANGENT	CHORD	CHORD BEARING
C7	11°36'20"	525.00'	106.34'	53.35'	106.16'	N37°47'01"E
C8	99°58'49"	35.00'	61.07'	41.70'	53.62'	N81°58'15"E
C9	1°44'11"	175.00'	5.30'	2.65'	5.30'	S47°10'15"E
C10	9°19'40"	225.00'	36.63'	18.36'	36.59'	N50°58'00"W
C11	53°51'31"	35.00'	32.90'	17.78'	31.70'	N28°42'05"W
C12	0°06'15"	642.39'	1.17'	0.58'	1.17'	S89°50'17"E

CURVE #	DELTA	RADIUS	LENGTH	TANGENT	CHORD	CHORD BEARING
C13	25°51'14"	175.00'	78.97'	40.17'	78.30'	S76°02'42"E
C14	8°55'25"	692.39'	107.84'	54.03'	107.73'	S85°34'25"W
C15	98°00'12"	35.00'	59.87'	40.27'	52.83'	N49°53'12"W
C16	81°28'26"	35.00'	49.77'	30.14'	45.68'	S39°51'07"W
C17	6°59'10"	961.26'	117.21'	58.68'	117.13'	S84°04'55"W
C18	9°30'57"	225.00'	37.37'	18.73'	37.33'	N86°52'12"W

APPROVED:
YORK COUNTY BOARD OF SUPERVISORS

BY: *Joan Kassel*, PLAT APPROVING AGENT

DATE: JANUARY 21, 2021

STATE OF VIRGINIA
COUNTY OF YORK

IN THE CLERK'S OFFICE OF THE CIRCUIT COURT FOR THE COUNTY OF YORK-POQUOSON THE 21 DAY OF January, 2021.

THIS MAP WAS PRESENTED AND ADMITTED TO RECORD AS THE LAW DIRECTS, AS INSTRUMENT NO. 210001469

TESTE: _____, CLERK

BY: *Leah Ky DC*

S:\035514\15102 - Smith Farms\11 Yorktown Road\Survey\Plan\Phase1B.dwg, 10/14/2020 9:02:27 AM, hawkins