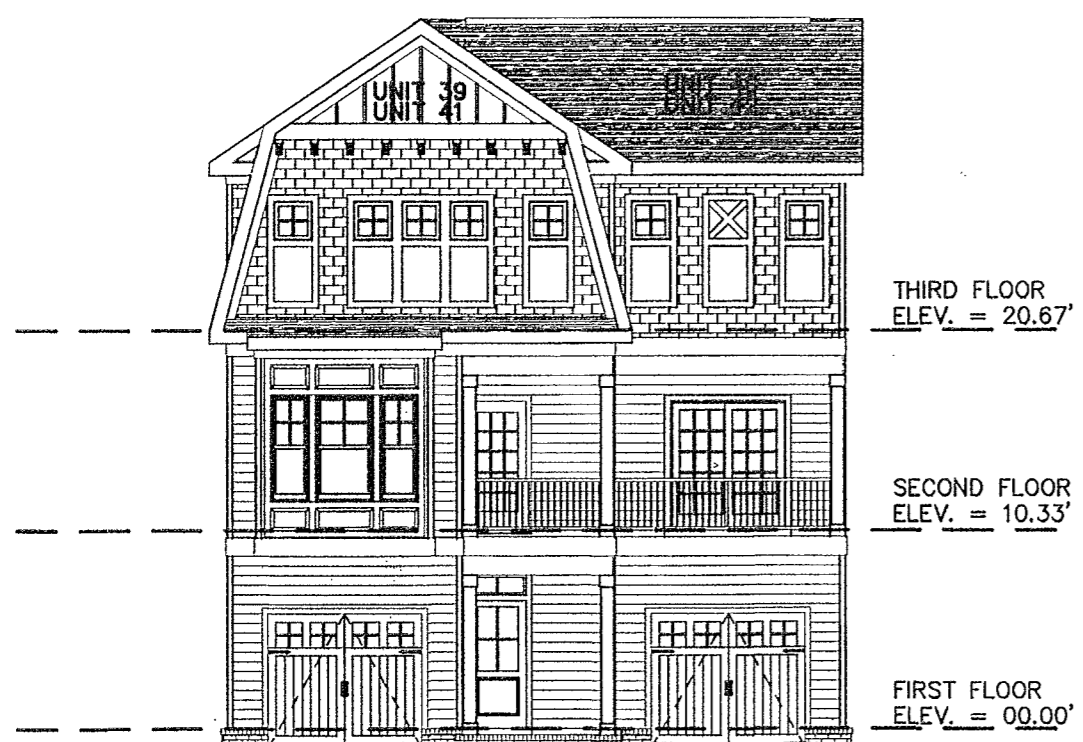
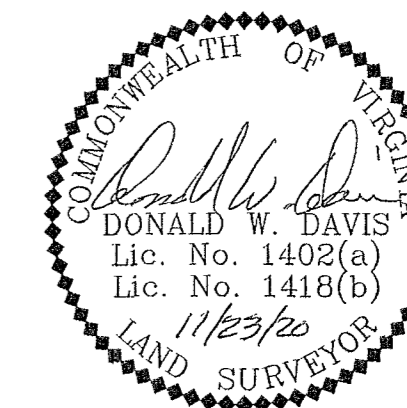


PHASE TWENTY – BUILDING TWENTY NINE DETAIL (UNITS 39 & 40)
 PHASE TWENTY ONE – BUILDING THIRTY DETAIL (UNITS 41 & 42)

CONDOMINIUM PLAT
 OF
 PHASE TWENTY
 AND
 PHASE TWENTY ONE
 MAINSTAY AT
 COMMONWEALTH GREEN
 SECTION TWO

BETHEL MAGISTERIAL DISTRICT
 COUNTY OF YORK, VIRGINIA
 SCALE: 1"=10' DATE: NOVEMBER 23, 2020
 SHEET 6 OF 6

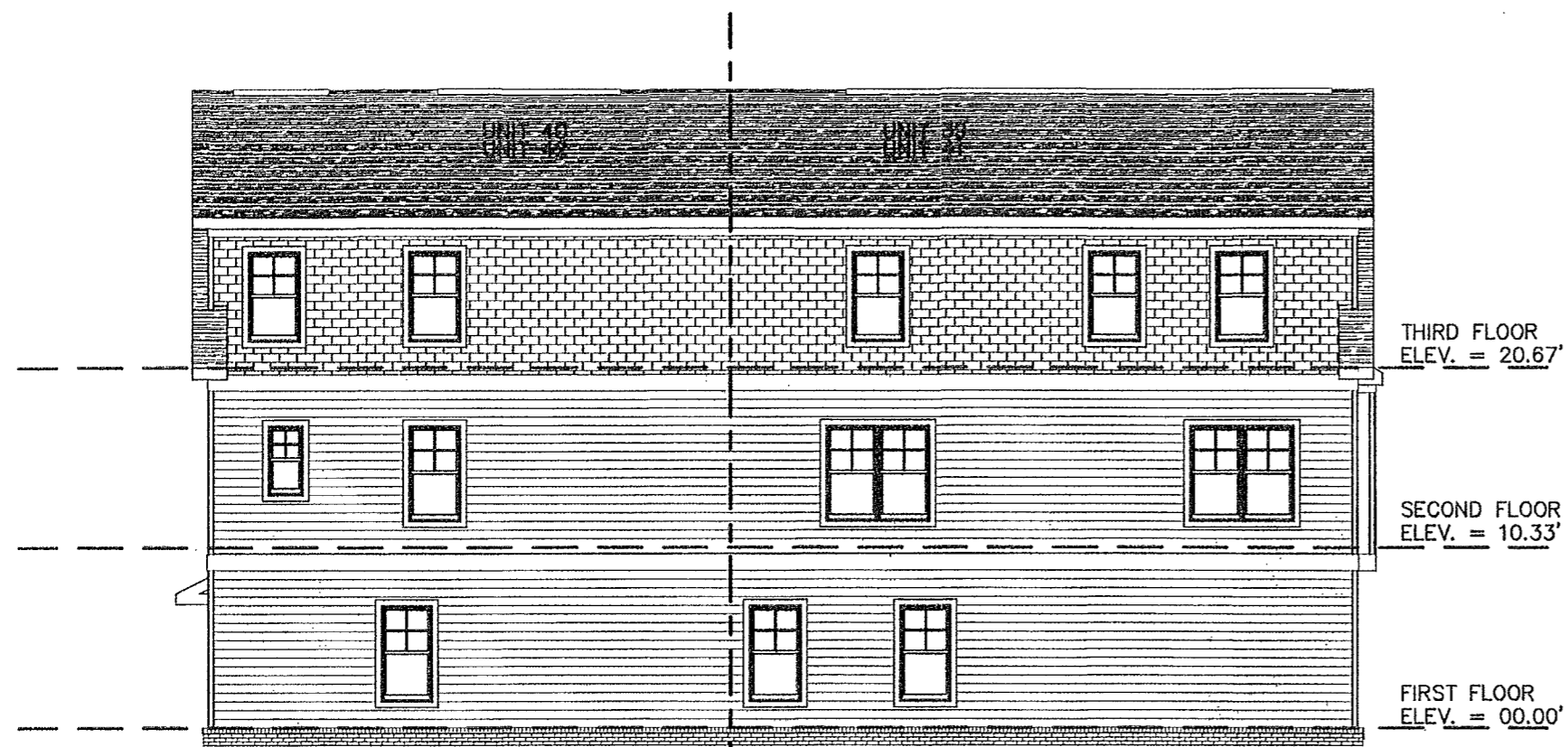
DAVIS & ASSOCIATES, P.C.
 LAND SURVEYORS AND PLANNERS
 3630 GEORGE WASHINGTON MEMORIAL HIGHWAY
 YORKTOWN, VIRGINIA 23693
 (757)867-8583



FRONT ELEVATION
 (PRIVATE LANE SIDE)



REAR ELEVATION
 (PUBLIC STREET SIDE)



LEFT SIDE ELEVATION



RIGHT SIDE ELEVATION

APPROVED
 YORK COUNTY BOARD OF SUPERVISORS
 BY: Jessie Kassel
 PLAT APPROVING AGENT
 DATE: FEBRUARY 2, 2021

STATE OF VIRGINIA
 COUNTY OF YORK
 IN THE CLERK'S OFFICE OF THE YORK -
 POQUOSON CIRCUIT COURT THIS 8
 DAY OF February, 2021, THIS MAP WAS
 PRESENTED AND ADMITTED TO RECORD AS
 THE LAW DIRECTS AS INSTRUMENT # 210002594
 TESTE: Kristen N. Nelson
 CLERK
 BY: Leah King DC