

CURVE TABLE						
CURVE #	DELTA	RADIUS	LENGTH	TANGENT	CHORD	CHORD BEARING
C19	32°20'39"	57.00'	32.18'	16.53'	31.75'	N2°38'17"W
C20	32°13'06"	57.00'	32.05'	16.46'	31.63'	N29°38'36"E
C21	31°52'32"	57.00'	31.71'	16.28'	31.30'	N61°41'25"E
C22	31°45'25"	57.00'	31.59'	16.21'	31.19'	S86°29'36"E
C23	52°07'47"	57.00'	51.86'	27.88'	50.09'	S44°33'00"E
C24	86°48'52"	57.00'	86.37'	53.92'	78.34'	S24°55'20"W
C25	14°45'06"	57.00'	14.68'	7.38'	14.64'	S75°42'19"W
C26	50°56'44"	29.50'	26.23'	14.05'	25.37'	N57°36'30"E
C27	117°45'03"	24.50'	50.35'	40.57'	41.95'	N26°44'24"W

CURVE TABLE						
CURVE #	DELTA	RADIUS	LENGTH	TANGENT	CHORD	CHORD BEARING
C28	86°25'18"	24.50'	36.95'	23.02'	33.55'	S51°10'27"W
C29	53°32'55"	24.50'	22.90'	12.36'	22.07'	N67°36'38"E
C30	32°52'22"	24.50'	14.06'	7.23'	13.86'	N24°24'00"E
C31	92°34'03"	24.50'	39.58'	25.62'	35.42'	S39°19'53"E
C32	88°49'53"	24.50'	37.98'	24.01'	34.29'	N49°58'08"E
C33	18°25'29"	225.00'	72.35'	36.49'	72.04'	N14°45'53"E
C34	18°25'22"	175.00'	56.27'	28.38'	56.03'	N14°45'53"E
C35	88°38'08"	21.00'	32.49'	20.51'	29.34'	N38°45'52"W

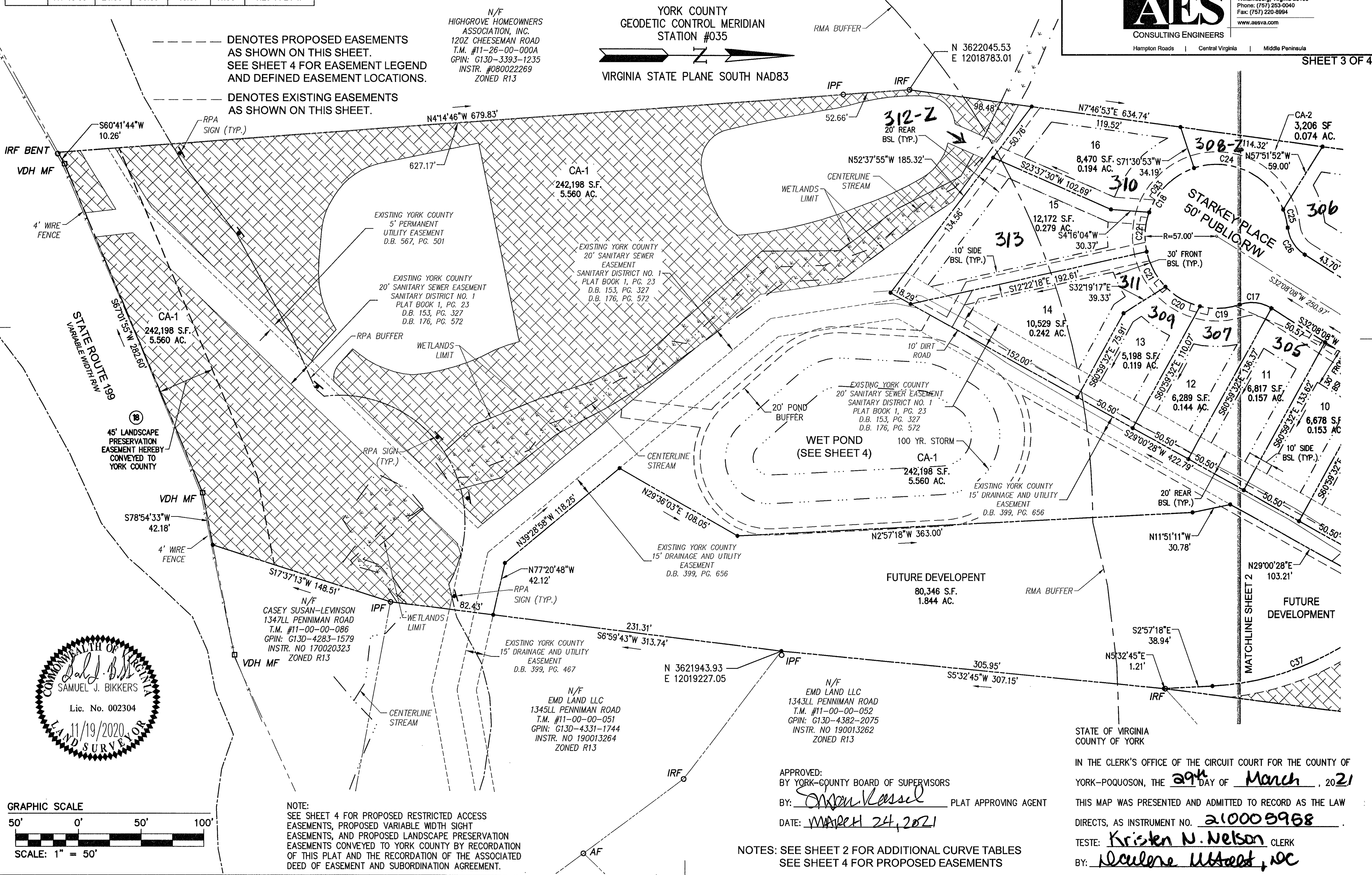
CURVE TABLE						
CURVE #	DELTA	RADIUS	LENGTH	TANGENT	CHORD	CHORD BEARING
C36	19°29'35"	175.00'	59.54'	30.06'	59.25'	N51°14'45"W
C37	58°02'14"	225.00'	227.91'	124.82'	218.29'	S31°58'25"E

**PLAT OF SUBDIVISION
CARRINGTON MEADOWS
PHASE I**

BRUTON DISTRICT YORK COUNTY VIRGINIA
 Date: 06/26/2020 Scale: 1" = 50' Proj. No.: W10537-01 Proj. Contacts: SJB/JFS

AES
CONSULTING ENGINEERS
 5248 Old Towne Road, Suite 1
 Williamsburg, Virginia 23188
 Phone: (757) 253-0040
 Fax: (757) 220-8994
 www.aesva.com

SHEET 3 OF 4

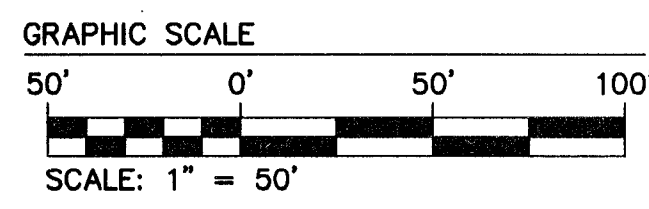
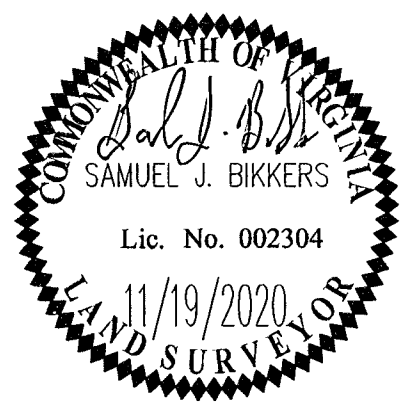


--- DENOTES PROPOSED EASEMENTS AS SHOWN ON THIS SHEET. SEE SHEET 4 FOR EASEMENT LEGEND AND DEFINED EASEMENT LOCATIONS.
 - - - DENOTES EXISTING EASEMENTS AS SHOWN ON THIS SHEET.

N/F HIGHGROVE HOMEOWNERS ASSOCIATION, INC.
 1202 CHEESEMAN ROAD
 T.M. #11-26-00-000A
 GPIN: G13D-3393-1235
 INSTR. #080022269
 ZONED R13

YORK COUNTY GEODETIC CONTROL MERIDIAN STATION #035
 VIRGINIA STATE PLANE SOUTH NAD83

FOREST/OPEN SPACE BMP (AREA= 150,775 S.F.± OR 3.46 AC.±) SEE GENERAL NOTE #14
 DENOTES WETLANDS (AREA= 15,830 S.F.± OR 0.363 AC.±) SEE GENERAL NOTE #20



NOTE: SEE SHEET 4 FOR PROPOSED RESTRICTED ACCESS EASEMENTS, PROPOSED VARIABLE WIDTH SIGHT EASEMENTS, AND PROPOSED LANDSCAPE PRESERVATION EASEMENTS CONVEYED TO YORK COUNTY BY RECORDATION OF THIS PLAT AND THE RECORDATION OF THE ASSOCIATED DEED OF EASEMENT AND SUBORDINATION AGREEMENT.

APPROVED: BY YORK-COUNTY BOARD OF SUPERVISORS
 BY: *Erin Kassel* PLAT APPROVING AGENT
 DATE: MARCH 24, 2021

NOTES: SEE SHEET 2 FOR ADDITIONAL CURVE TABLES
 SEE SHEET 4 FOR PROPOSED EASEMENTS

STATE OF VIRGINIA COUNTY OF YORK
 IN THE CLERK'S OFFICE OF THE CIRCUIT COURT FOR THE COUNTY OF YORK-POQUOSON, THE 29th DAY OF March, 2021
 THIS MAP WAS PRESENTED AND ADMITTED TO RECORD AS THE LAW DIRECTS, AS INSTRUMENT NO. 210009968
 TESTE: Kristen N. Nelson CLERK
 BY: Deulene Ufford, JCC

S:\CIB\10537-01-Approved Property\Approved Property\Plat\W10537-01_Site_Plat.dwg, 11/19/2020 12:42:18 PM, mark.kass