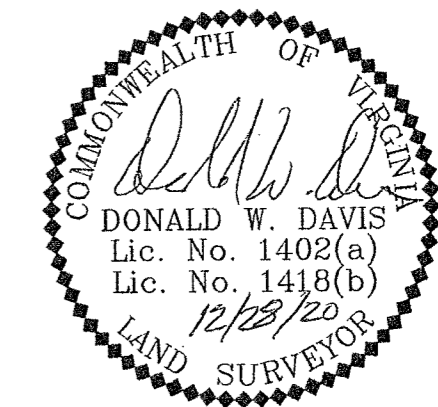


PHASE TWENTY TWO – BUILDING THIRTY ONE DETAIL (UNITS 43 & 44)

CONDOMINIUM PLAT  
OF  
PHASE TWENTY TWO  
MAINSTAY AT  
COMMONWEALTH GREEN  
SECTION TWO

BETHEL MAGISTERIAL DISTRICT  
COUNTY OF YORK, VIRGINIA  
SCALE: 1"=10' DATE: DECEMBER 28, 2020  
SHEET 6 OF 6

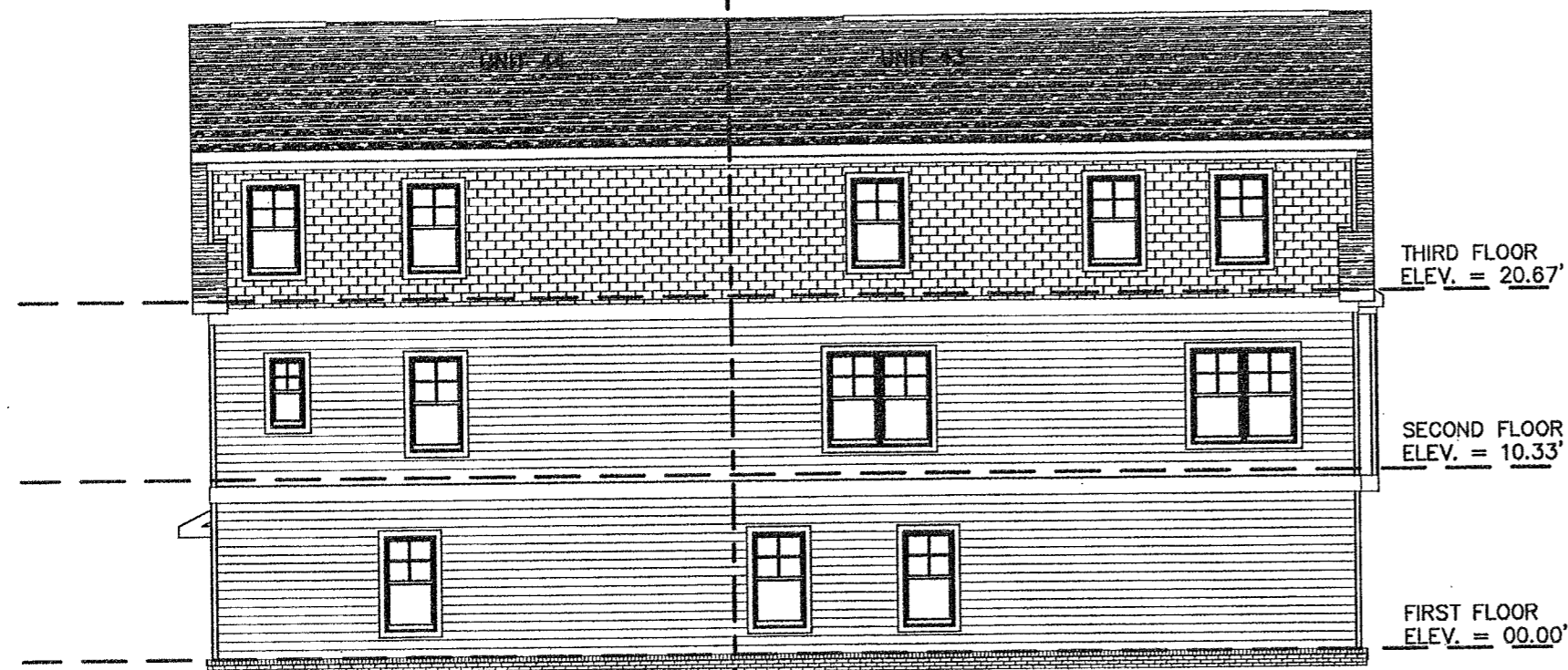
DAVIS & ASSOCIATES, P.C.  
LAND SURVEYORS AND PLANNERS  
3630 GEORGE WASHINGTON MEMORIAL HIGHWAY  
YORKTOWN, VIRGINIA 23693  
(757)867-8583



FRONT ELEVATION  
(PRIVATE LANE SIDE)



REAR ELEVATION  
(PUBLIC STREET SIDE)



LEFT SIDE ELEVATION



RIGHT SIDE ELEVATION

APPROVED  
YORK COUNTY BOARD OF SUPERVISORS  
BY: Erin Kassel  
PLAT APPROVING AGENT  
DATE: APRIL 6, 2021

STATE OF VIRGINIA  
COUNTY OF YORK  
IN THE CLERK'S OFFICE OF THE YORK -  
POQUOSON CIRCUIT COURT THIS 6th  
DAY OF April 2021, THIS MAP WAS  
PRESENTED AND ADMITTED TO RECORD AS  
THE LAW DIRECTS AS INSTRUMENT # 210006954  
TESTE: KRISTEN N. NELSON, CLERK  
CLERK  
BY: Wendee Uttelt, DC