

LINE TABLE		
LINE #	BEARING	LENGTH
L1	N26°59'57"W	15.96'
L2	N63°00'03"E	40.00'
L3	S26°59'57"E	50.00'
L4	S72°02'49"W	64.46'
L5	S11°47'55"E	65.00'
L6	N26°59'57"W	35.17'
L7	S26°37'09"W	49.48'
L8	N28°32'23"E	44.02'
L9	N76°59'57"W	36.95'
L10	N13°09'24"W	41.20'

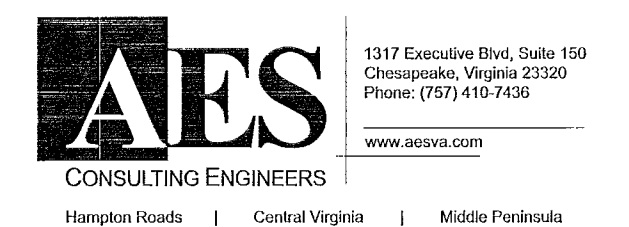
LINE TABLE		
LINE #	BEARING	LENGTH
L11	N6°29'47"E	44.08'
L12	S26°37'09"W	29.37'
L13	S26°37'09"W	20.10'
L14	S63°00'03"W	117.82'
L15	N26°59'56"W	50.00'
L16	N26°59'57"W	103.27'
L17	N63°00'03"E	157.71'
L18	S63°00'03"W	157.71'
L19	N26°59'57"W	121.36'

CURVE TABLE						
CURVE #	RADIUS	LENGTH	DELTA	TANGENT	CHORD	CHORD BEARING
C1	46.42'	15.65'	19°18'44"	7.90'	15.57'	N25°23'17"E
C2	61.42'	29.84'	27°50'06"	15.22'	29.54'	N1°48'52"E
C3	25.00'	42.20'	96°43'00"	28.12'	37.37'	N21°21'32"E
C4	1090.17'	110.44'	5°48'15"	55.27'	110.39'	N72°37'10"E
C5	879.00'	632.81'	41°14'53"	330.82'	619.23'	N81°02'05"W
C6	25.00'	34.99'	80°11'43"	21.05'	32.20'	S85°27'09"W
C7	275.00'	84.69'	17°38'45"	42.68'	84.36'	S54°10'40"W
C8	225.00'	69.29'	17°38'45"	34.92'	69.02'	N54°10'40"E
C9	25.00'	46.15'	105°45'56"	33.04'	39.87'	N7°31'40"W
C10	25.00'	35.91'	82°18'23"	21.85'	32.90'	S14°09'15"W

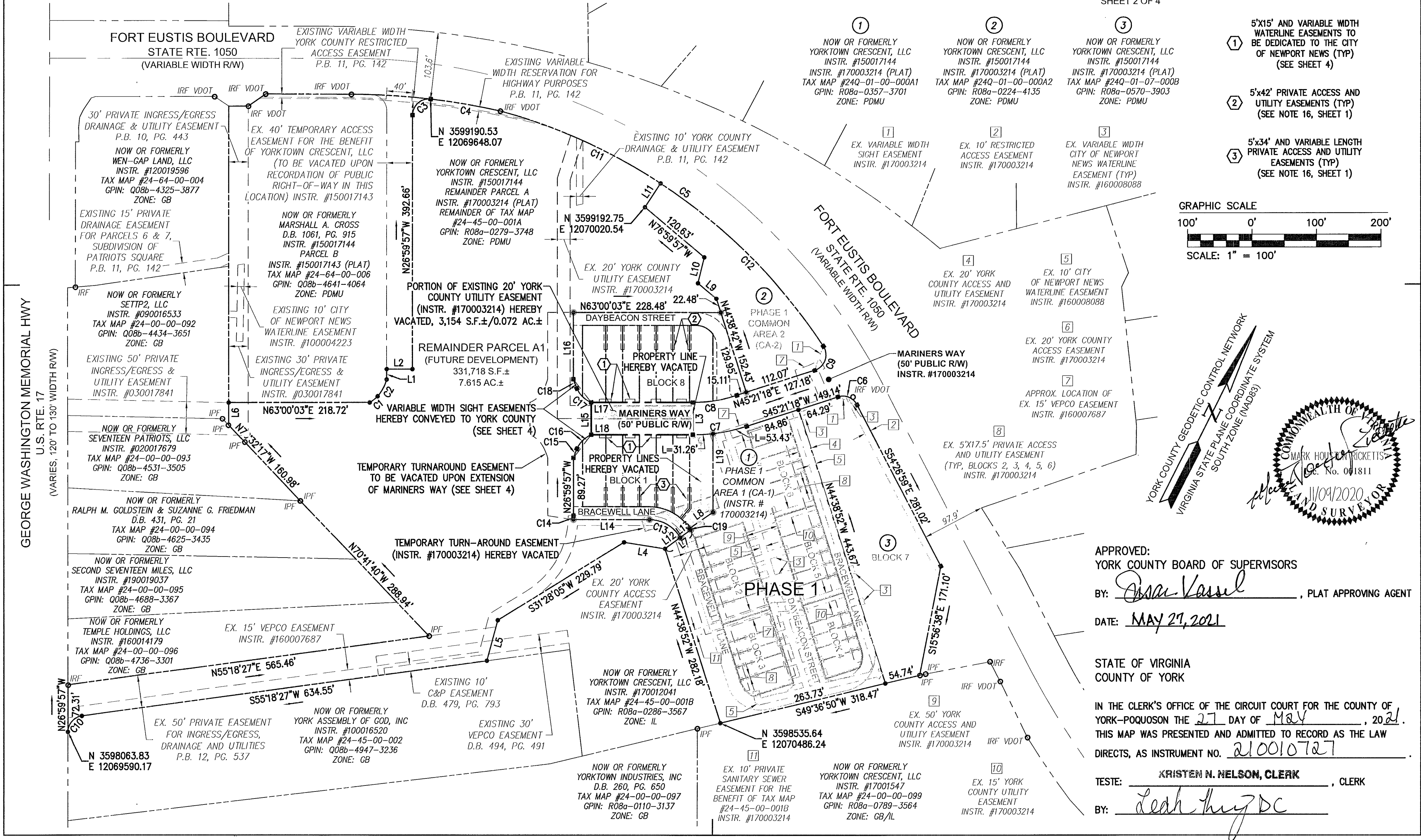
CURVE TABLE						
CURVE #	RADIUS	LENGTH	DELTA	TANGENT	CHORD	CHORD BEARING
C11	879.00'	273.52'	17°49'45"	137.88'	272.42'	S87°15'21"W
C12	879.00'	359.28'	23°25'09"	182.18'	356.79'	N72°07'12"W
C13	55.00'	58.02'	60°26'26"	32.04'	55.37'	N86°46'45"W
C14	145.00'	6.00'	2°22'18"	3.00'	6.00'	N25°48'49"W
C15	116.57'	15.17'	7°27'29"	7.60'	15.16'	N6°25'42"W
C16	42.00'	31.69'	43°14'10"	16.64'	30.95'	N18°55'07"E
C17	42.00'	31.69'	43°14'12"	16.64'	30.95'	N72°55'04"W
C18	116.57'	15.17'	7°27'29"	7.60'	15.16'	N47°34'13"W
C19	75.00'	2.90'	2°12'43"	1.45'	2.90'	S59°29'22"E

RESUBDIVISION OF
YORKTOWN CRESCENT, PHASE 1
AND
PLAT OF SUBDIVISION
YORKTOWN CRESCENT, PHASE 2

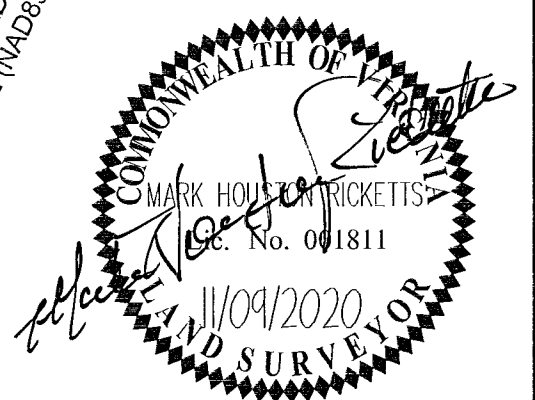
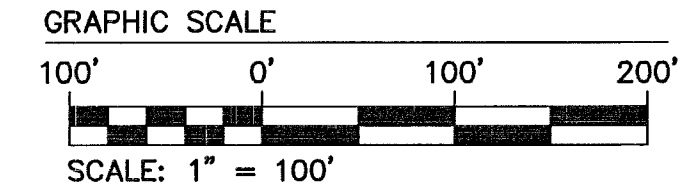
NELSON DISTRICT YORK COUNTY VIRGINIA
Date: 07/17/2020 Scale: 1" = 100' Proj. No.: H10028-05 Proj. Contacts: MHR



SHEET 2 OF 4



- ① 5'x15' AND VARIABLE WIDTH WATERLINE EASEMENTS TO BE DEDICATED TO THE CITY OF NEWPORT NEWS (TYP) (SEE SHEET 4)
- ② 5'x42' PRIVATE ACCESS AND UTILITY EASEMENTS (TYP) (SEE NOTE 16, SHEET 1)
- ③ 5'x34' AND VARIABLE LENGTH PRIVATE ACCESS AND UTILITY EASEMENTS (TYP) (SEE NOTE 16, SHEET 1)



APPROVED:
YORK COUNTY BOARD OF SUPERVISORS
BY: Janet Kassel, PLAT APPROVING AGENT
DATE: MAY 27, 2021
STATE OF VIRGINIA
COUNTY OF YORK
IN THE CLERK'S OFFICE OF THE CIRCUIT COURT FOR THE COUNTY OF YORK-POQUOSON THE 27 DAY OF MAY, 2021.
THIS MAP WAS PRESENTED AND ADMITTED TO RECORD AS THE LAW DIRECTS, AS INSTRUMENT NO. 210010727
TESTE: KRISTEN N. NELSON, CLERK, CLERK
BY: Leah Huy DC