

RESUBDIVISION OF YORKTOWN CRESCENT, PHASE 1 AND PLAT OF SUBDIVISION YORKTOWN CRESCENT, PHASE 2

NELSON DISTRICT YORK COUNTY VIRGINIA

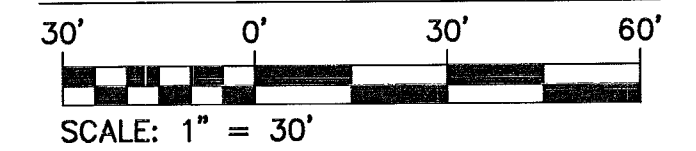
Date: 07/17/2020 Scale: 1" = 30' Proj. No.: H10028-05 Proj. Contacts: MHR



1317 Executive Blvd, Suite 150 Chesapeake, Virginia 23320 Phone: (757) 410-7436 www.aesva.com

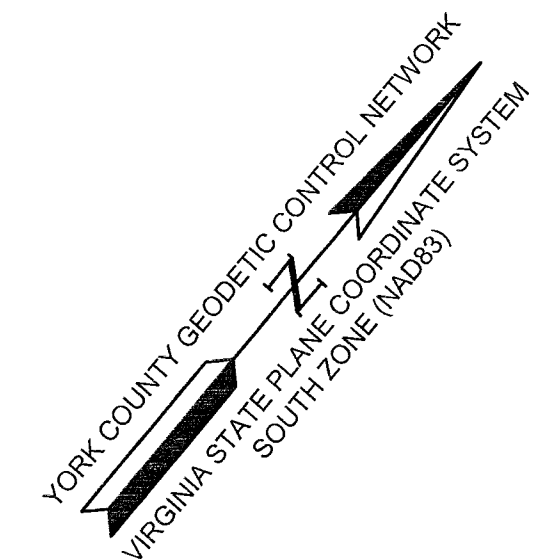
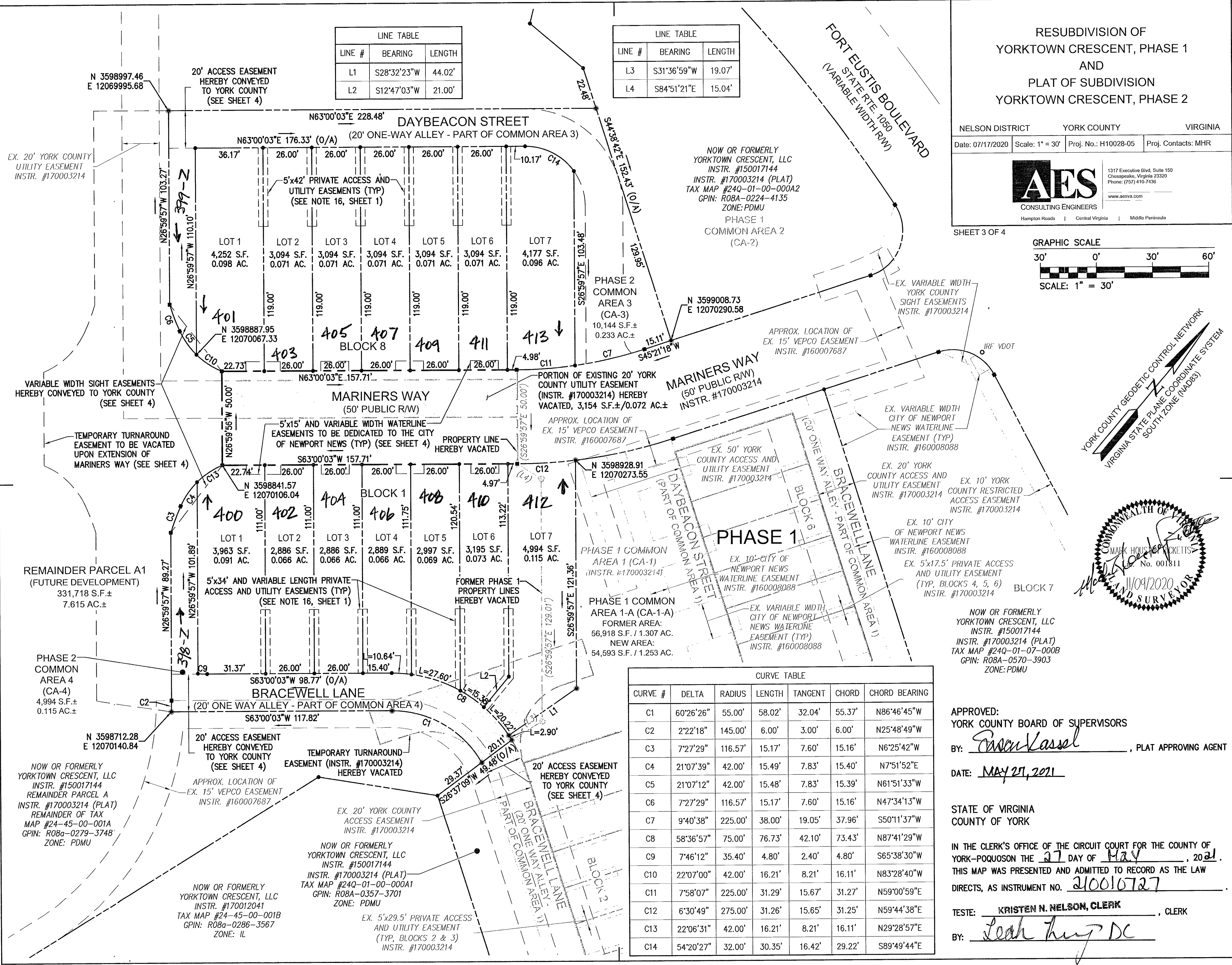
SHEET 3 OF 4

GRAPHIC SCALE



LINE TABLE		
LINE #	BEARING	LENGTH
L1	S28°32'23"W	44.02'
L2	S12°47'03"W	21.00'

LINE TABLE		
LINE #	BEARING	LENGTH
L3	S31°36'59"W	19.07'
L4	S84°51'21"E	15.04'



CURVE TABLE						
CURVE #	DELTA	RADIUS	LENGTH	TANGENT	CHORD	CHORD BEARING
C1	60°26'26"	55.00'	58.02'	32.04'	55.37'	N86°46'45"W
C2	2°22'18"	145.00'	6.00'	3.00'	6.00'	N25°48'49"W
C3	7°27'29"	116.57'	15.17'	7.60'	15.16'	N6°25'42"W
C4	21°07'39"	42.00'	15.49'	7.83'	15.40'	N7°51'52"E
C5	21°07'12"	42.00'	15.48'	7.83'	15.39'	N61°51'33"W
C6	7°27'29"	116.57'	15.17'	7.60'	15.16'	N47°34'13"W
C7	9°40'38"	225.00'	38.00'	19.05'	37.96'	S50°11'37"W
C8	58°36'57"	75.00'	76.73'	42.10'	73.43'	N87°41'29"W
C9	7°46'12"	35.40'	4.80'	2.40'	4.80'	S65°38'30"W
C10	22°07'00"	42.00'	16.21'	8.21'	16.11'	N83°28'40"W
C11	7°58'07"	225.00'	31.29'	15.67'	31.27'	N59°00'59"E
C12	6°30'49"	275.00'	31.26'	15.65'	31.25'	N59°44'38"E
C13	22°06'31"	42.00'	16.21'	8.21'	16.11'	N29°28'57"E
C14	54°20'27"	32.00'	30.35'	16.42'	29.22'	S89°49'44"E

APPROVED: YORK COUNTY BOARD OF SUPERVISORS BY: *Patricia Kassel*, PLAT APPROVING AGENT

DATE: MAY 27, 2021

STATE OF VIRGINIA COUNTY OF YORK

IN THE CLERK'S OFFICE OF THE CIRCUIT COURT FOR THE COUNTY OF YORK-POQUOSON THE 27 DAY OF May, 2021. THIS MAP WAS PRESENTED AND ADMITTED TO RECORD AS THE LAW DIRECTS, AS INSTRUMENT NO. 210010727

TESTE: KRISTEN N. NELSON, CLERK, CLERK BY: Leah King DC