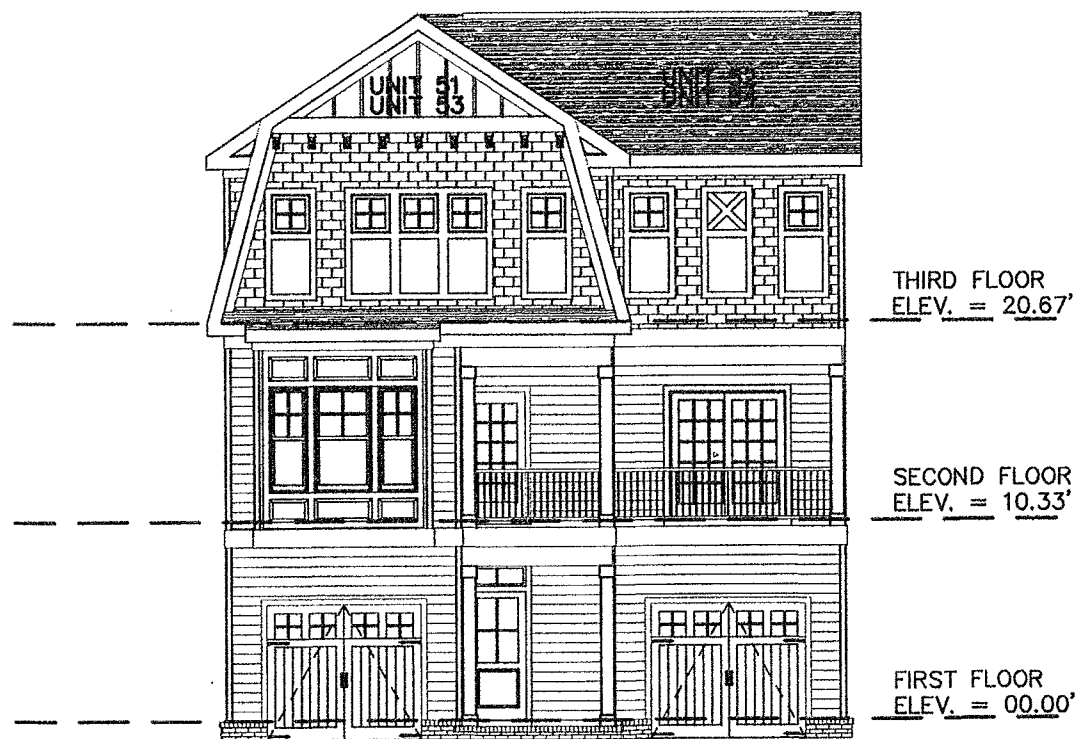
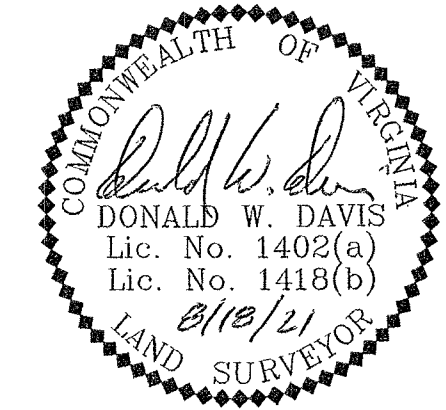


PHASE TWENTY SIX – BUILDING NINETEEN DETAIL (UNITS 51 & 52)
 PHASE TWENTY SEVEN – BUILDING TWENTY DETAIL (UNITS 53 & 54)

CONDOMINIUM PLAT
 OF
 PHASE TWENTY SIX
 AND
 PHASE TWENTY SEVEN
 MAINSTAY AT
 COMMONWEALTH GREEN
 SECTION TWO

BETHEL MAGISTERIAL DISTRICT
 COUNTY OF YORK, VIRGINIA
 SCALE: 1"=40' DATE: AUGUST 18, 2021
 SHEET 6 OF 6

DAVIS & ASSOCIATES, P.C.
 LAND SURVEYORS AND PLANNERS
 3630 GEORGE WASHINGTON MEMORIAL HIGHWAY
 YORKTOWN, VIRGINIA 23693
 (757)867-8583



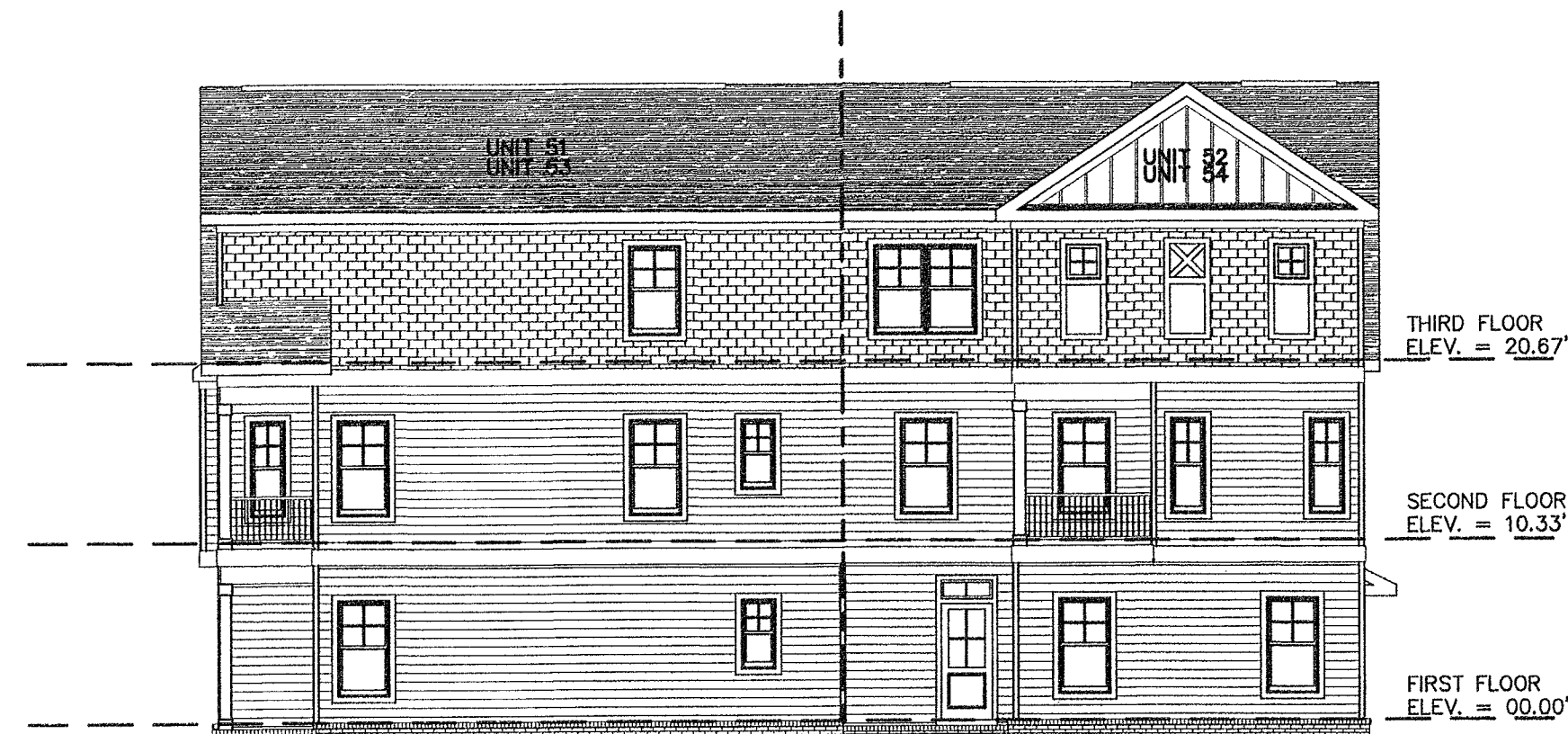
FRONT ELEVATION
 (PRIVATE LANE SIDE)



REAR ELEVATION
 (PUBLIC STREET SIDE)



LEFT SIDE ELEVATION



RIGHT SIDE ELEVATION

APPROVED
 YORK COUNTY BOARD OF SUPERVISORS
 BY: Jason Kassel
 PLAT APPROVING AGENT
 DATE: SEPTEMBER 21, 2021

STATE OF VIRGINIA
 COUNTY OF YORK
 IN THE CLERK'S OFFICE OF THE YORK -
 POQUOSON CIRCUIT COURT THIS 28th
 DAY OF September 2021, THIS MAP WAS
 PRESENTED AND ADMITTED TO RECORD AS
 THE LAW DIRECTS AS INSTRUMENT # 210019775

TESTE: Kristen N. Nelson
 CLERK
 BY: Naalene M. Heltzel, DE