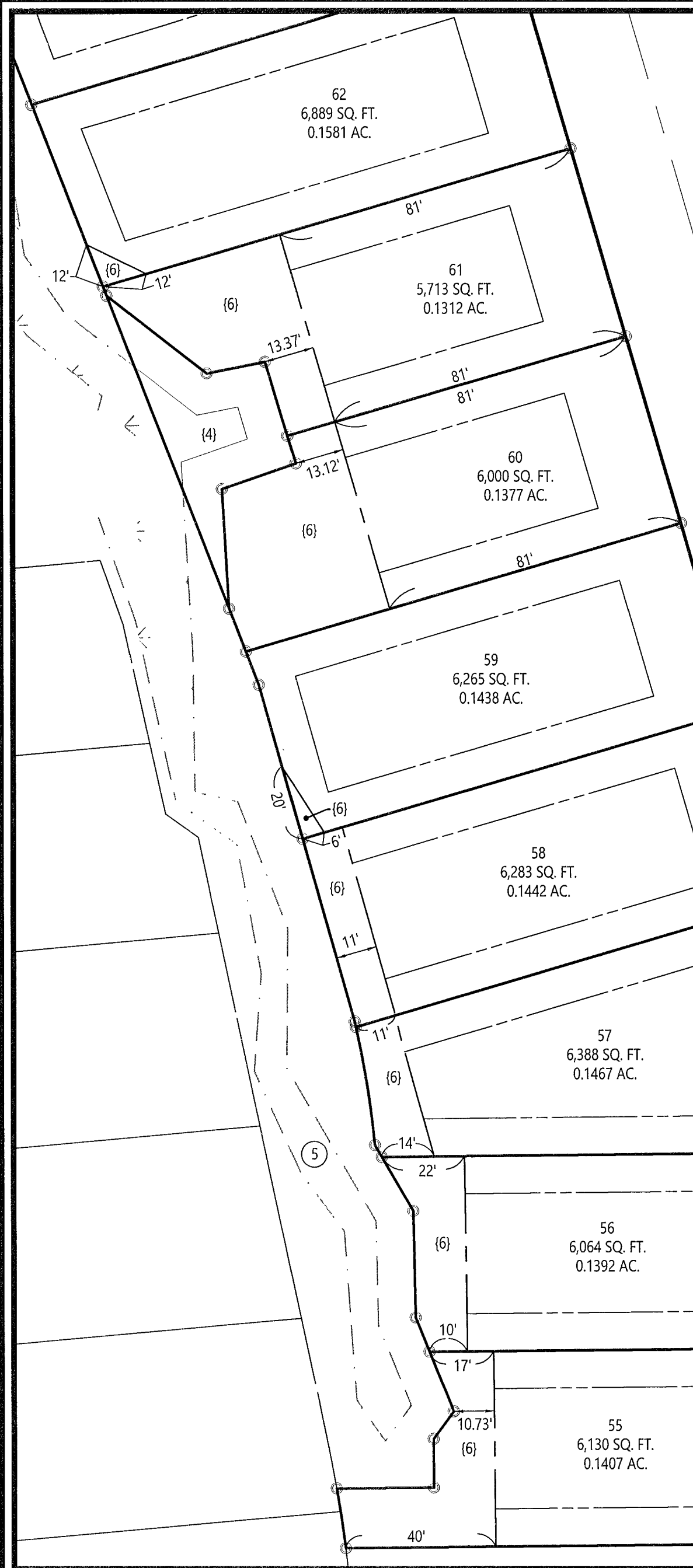
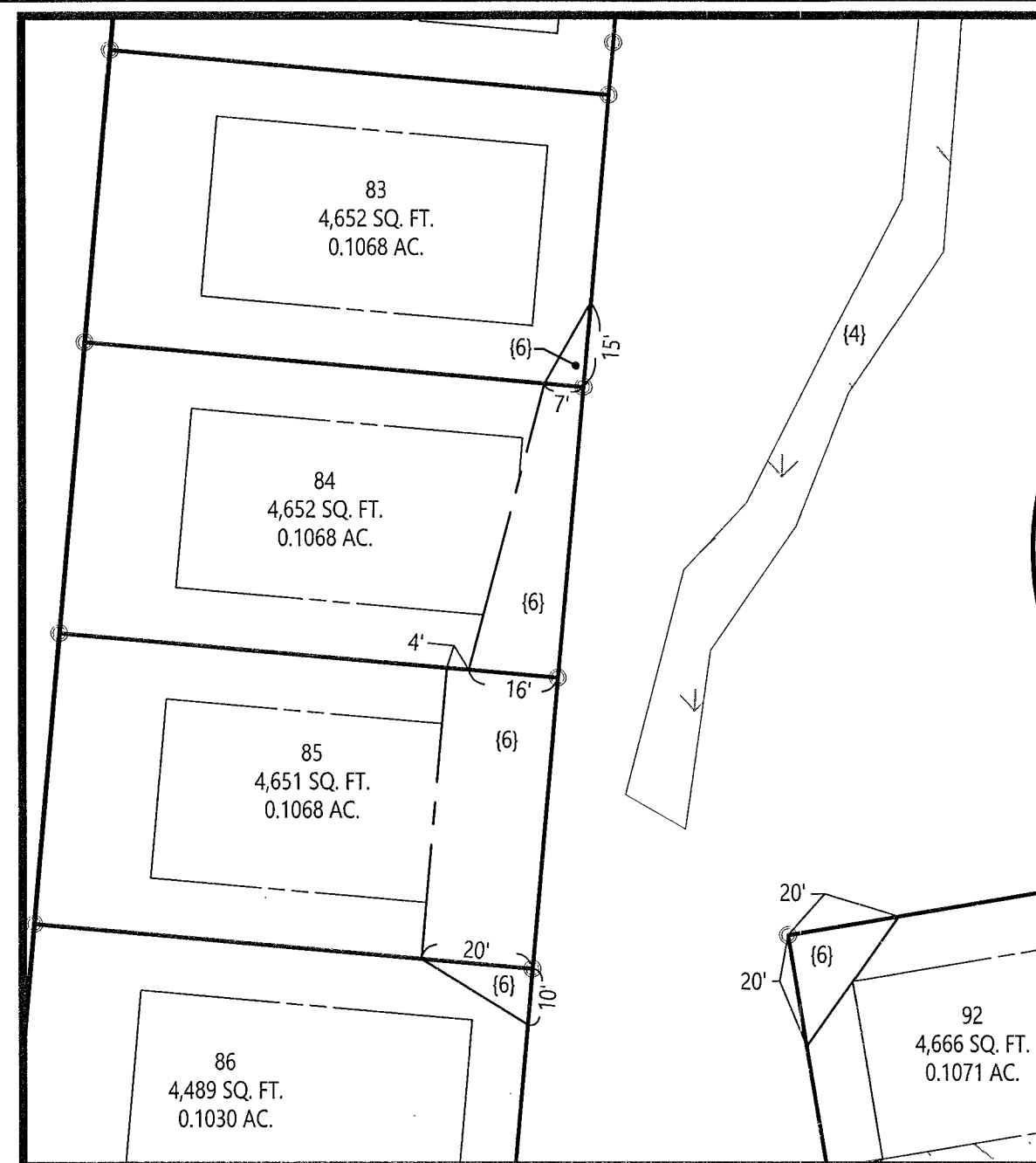


**PLAT OF CORRECTION
INSTRUMENT NO. 220013159
MARQUIS HILLS PHASE 3
BEING A
RESUBDIVISION OF PARCEL 12A
PROPERTY OF
MARQUIS SINGLE FAMILY
DEVELOPER, LLC.
BRUTON DISTRICT, YORK COUNTY, VIRGINIA
DATE: 8/31/2022
SHEET 14 OF 15**

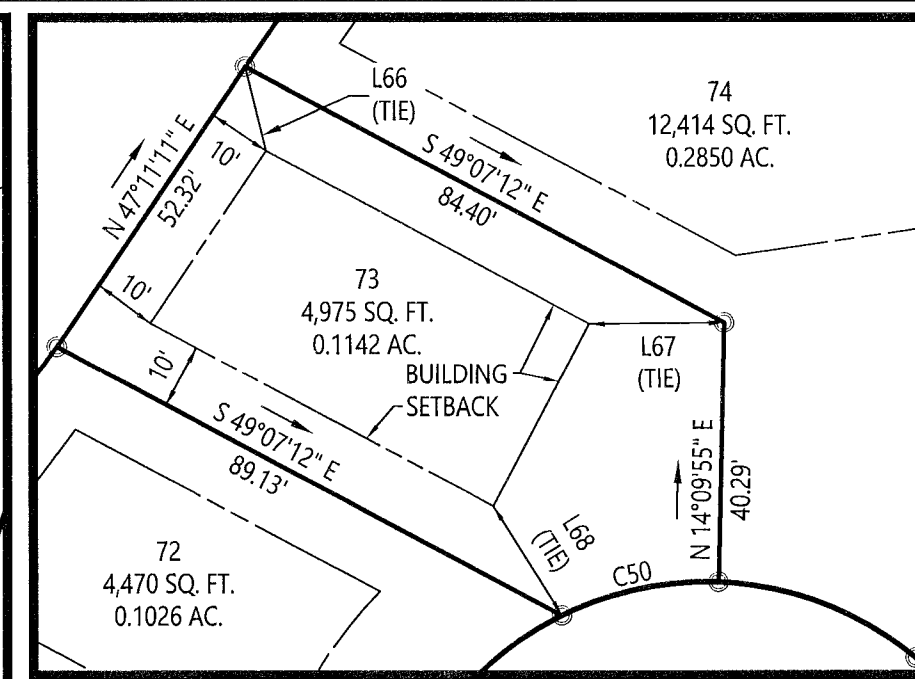


**INSET 1
1" = 30'**

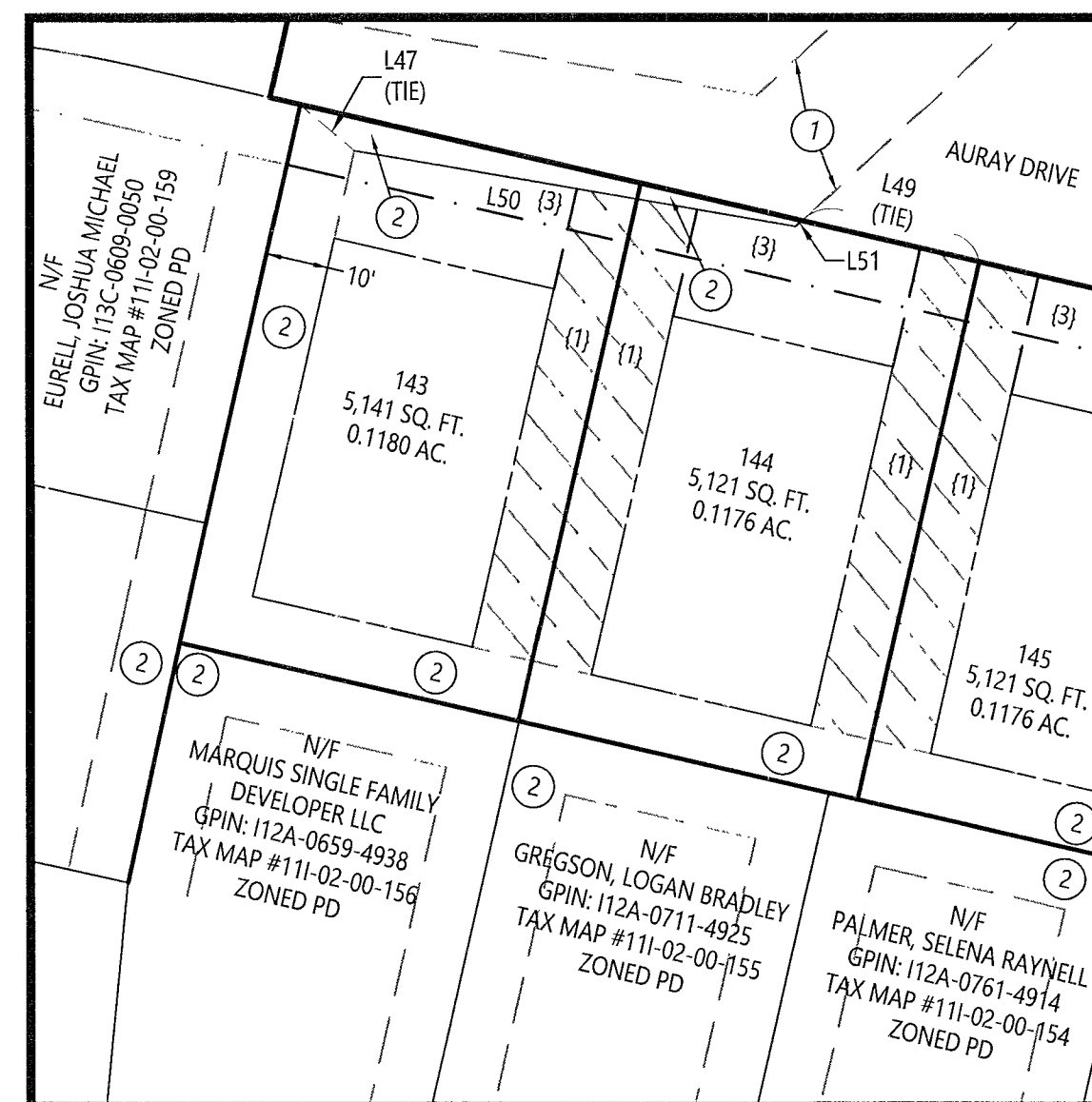


**INSET 2
1" = 30'**

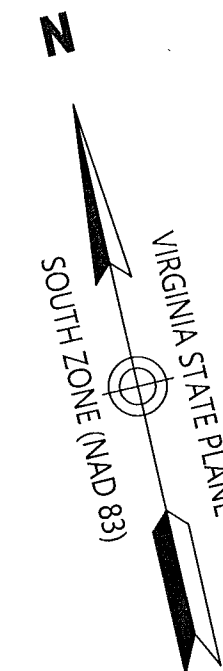
- ① PORTION OF EXISTING MARQUIS HILLS HOMEOWNERS ASSOCIATION, INC DRAINAGE EASEMENT INST. NO. 200010534 HEREBY EXTINGUISHED
- ② EXISTING MARQUIS HILLS HOMEOWNERS ASSOCIATION, INC DRAINAGE EASEMENT INST. NO. 200010534



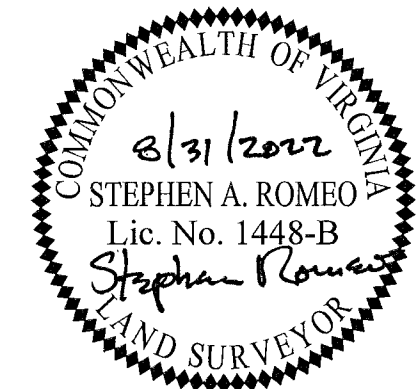
**INSET 3
1" = 30'**



**INSET 4
1" = 30'**



- LEGEND**
- ☐ CONCRETE MONUMENT TO BE SET
 - IRON ROD TO BE SET
 - △— CENTERLINE ROAD
 - — — PROPERTY LINE
 - — — BUILDING SETBACK LINE
 - — — FLOOD ZONE
 - — — WETLAND LINE
 - — — 100' RPA
 - — — RPA LIMITS
 - — — LANDSCAPE EASEMENT LINE
 - ▨ (diagonal lines) ① DRAINAGE EASEMENT HEREBY CONVEYED TO THE MARQUIS HILLS HOMEOWNERS' ASSOCIATION, INC.
 - ▨ (diagonal lines) ② 10' RESTRICTED ACCESS EASEMENT HEREBY CONVEYED TO YORK COUNTY
 - ▨ (diagonal lines) ③ 10' LANDSCAPE PRESERVATION EASEMENT HEREBY CONVEYED TO YORK COUNTY
 - ▨ (diagonal lines) ④ WETLAND CONSERVATION EASEMENT HEREBY CONVEYED TO YORK COUNTY
 - ▨ (diagonal lines) ⑤ VARIABLE WIDTH SIGHT EASEMENT HEREBY CONVEYED TO YORK COUNTY
 - ▨ (diagonal lines) ⑥ VARIABLE WIDTH RETAINING WALL MAINTENANCE EASEMENT HEREBY CONVEYED TO THE MARQUIS HILLS HOMEOWNERS' ASSOCIATION, INC. (NO EXCAVATION OR GRADE ALTERATION PERMITTED)
 - ▨ (diagonal lines) ⑦ 20' SEWER EASEMENT HEREBY CONVEYED TO YORK COUNTY SEE SHEET 15



vhb Transportation
Land Development
Environmental Services
351 McLaws Circle, Suite 3
Williamsburg, Virginia 23185
757 220 0500 • FAX 757 903 2794

APPROVED:
YORK COUNTY BOARD OF SUPERVISORS
BY: *Susan Kassel*
PLAT APPROVING AGENT
DATE: 9/30/22

STATE OF VIRGINIA, COUNTY OF YORK
IN THE CLERK'S OFFICE OF THE CIRCUIT COURT FOR THE COUNTY OF YORK—POQUOSON THE 20th DAY OF Sept, 2022, THIS MAP WAS PRESENTED AND ADMITTED TO RECORD AS THE LAW DIRECTS AS INSTRUMENT NO. 220013159
TESTE: KRISTEN N. NELSON, CLERK
BY: *Maureen Mitchell, ac*

