

YORK COUNTY GEODETIC CONTROL NETWORK
 VIRGINIA STATE PLANE COORDINATE SYSTEM
 SOUTH ZONE, NAD 83 (1994 HARN ADJ.)

CURVE TABLE						
CURVE #	RADIUS	LENGTH	DELTA	TANGENT	CHORD	CHORD BEARING
C1	1392.39'	175.01'	7°12'05"	87.62'	174.89'	S42°09'12"W
C2	1392.39'	180.54'	7°25'44"	90.39'	180.41'	S49°28'05"W
C3	994.93'	285.32'	16°25'51"	143.64'	284.34'	S44°57'57"W



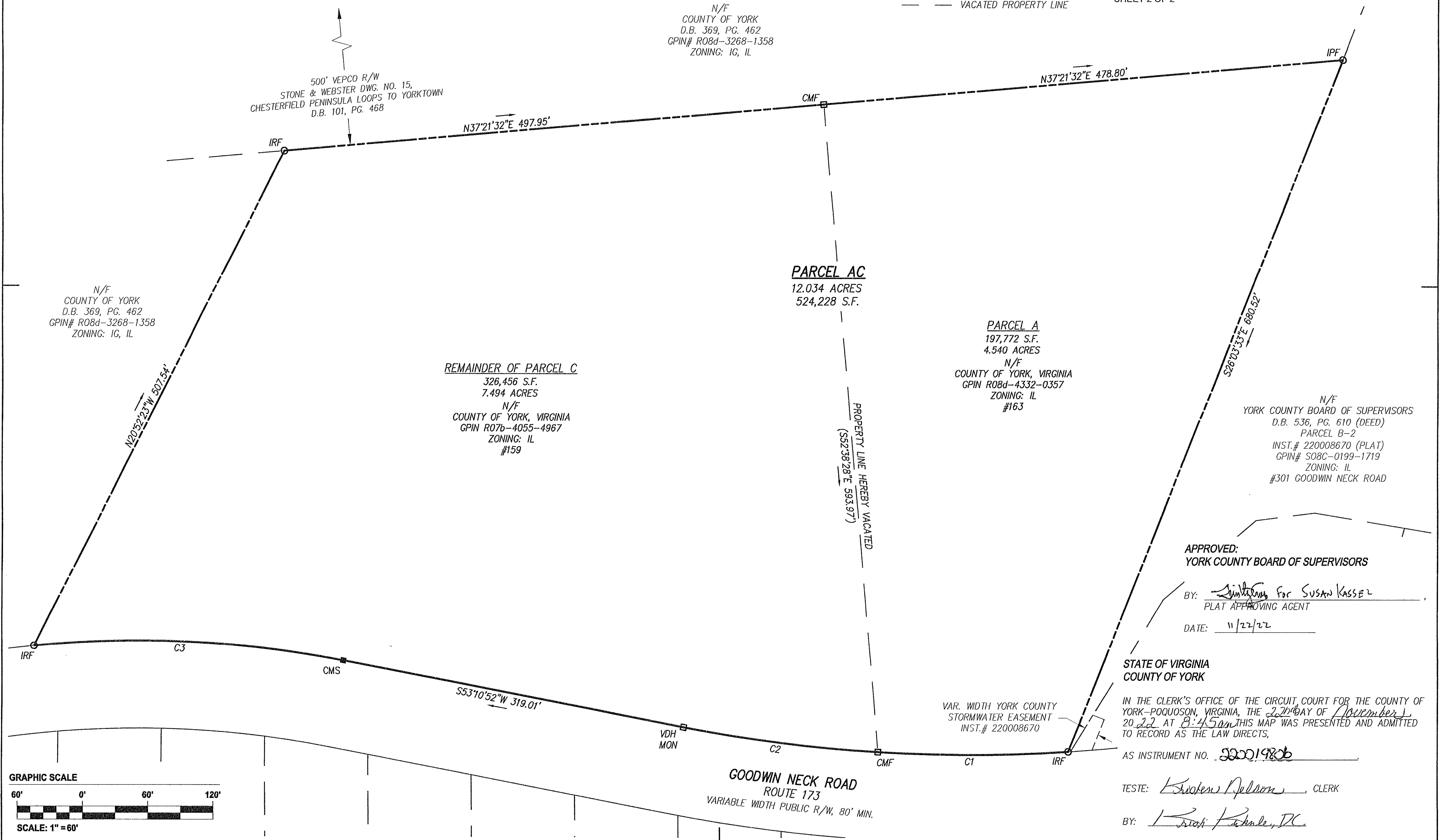
PROPERTY LINE VACATION
 BETWEEN THE PROPERTIES
 OF YORK COUNTY, VIRGINIA
**PARCELS A &
 REMAINDER OF C**

NELSON DISTRICT YORK COUNTY VIRGINIA
 Date: 08/09/2022 Scale: 1" = 60' Proj. No.: H10175-00 Proj. Contacts: JAMN/JCA



- LEGEND**
- IRF ○ IRON ROD FOUND
 - CMF □ CONCRETE MONUMENT FOUND
 - VDH □ VIRGINIA DEPT. OF HIGHWAYS MONUMENT FOUND
 - CMS ■ CONCRETE MONUMENT SET
 - VACATED PROPERTY LINE

SHEET 2 OF 2



N/F
 COUNTY OF YORK
 D.B. 369, PG. 462
 GPIN# R08d-3268-1358
 ZONING: IG, IL

500' VEPCO R/W
 STONE & WEBSTER DWG. NO. 15,
 CHESTERFIELD PENINSULA LOOPS TO YORKTOWN
 D.B. 101, PG. 468

N/F
 COUNTY OF YORK
 D.B. 369, PG. 462
 GPIN# R08d-3268-1358
 ZONING: IG, IL

N/F
 YORK COUNTY BOARD OF SUPERVISORS
 D.B. 536, PG. 610 (DEED)
 PARCEL B-2
 INST.# 220008670 (PLAT)
 GPIN# S08C-0199-1719
 ZONING: IL
 #301 GOODWIN NECK ROAD

APPROVED:
 YORK COUNTY BOARD OF SUPERVISORS

BY: *[Signature]* For SUSAN KASSEL
 PLAT APPROVING AGENT

DATE: 11/22/22

STATE OF VIRGINIA
 COUNTY OF YORK

IN THE CLERK'S OFFICE OF THE CIRCUIT COURT FOR THE COUNTY OF YORK-POQUOSON, VIRGINIA, THE 20th DAY OF November, 2022 AT 8:45am THIS MAP WAS PRESENTED AND ADMITTED TO RECORD AS THE LAW DIRECTS,

AS INSTRUMENT NO. 200019806

TESTE: *[Signature]*, CLERK

BY: *[Signature]*, DC