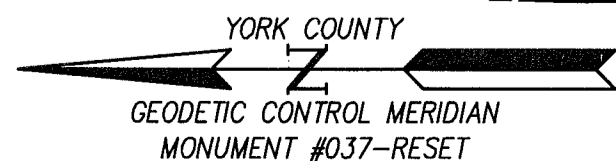
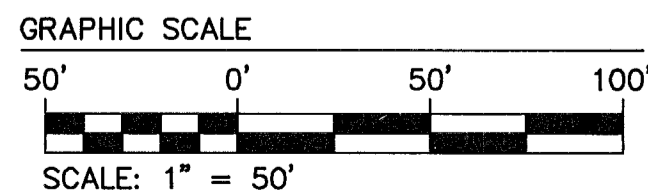
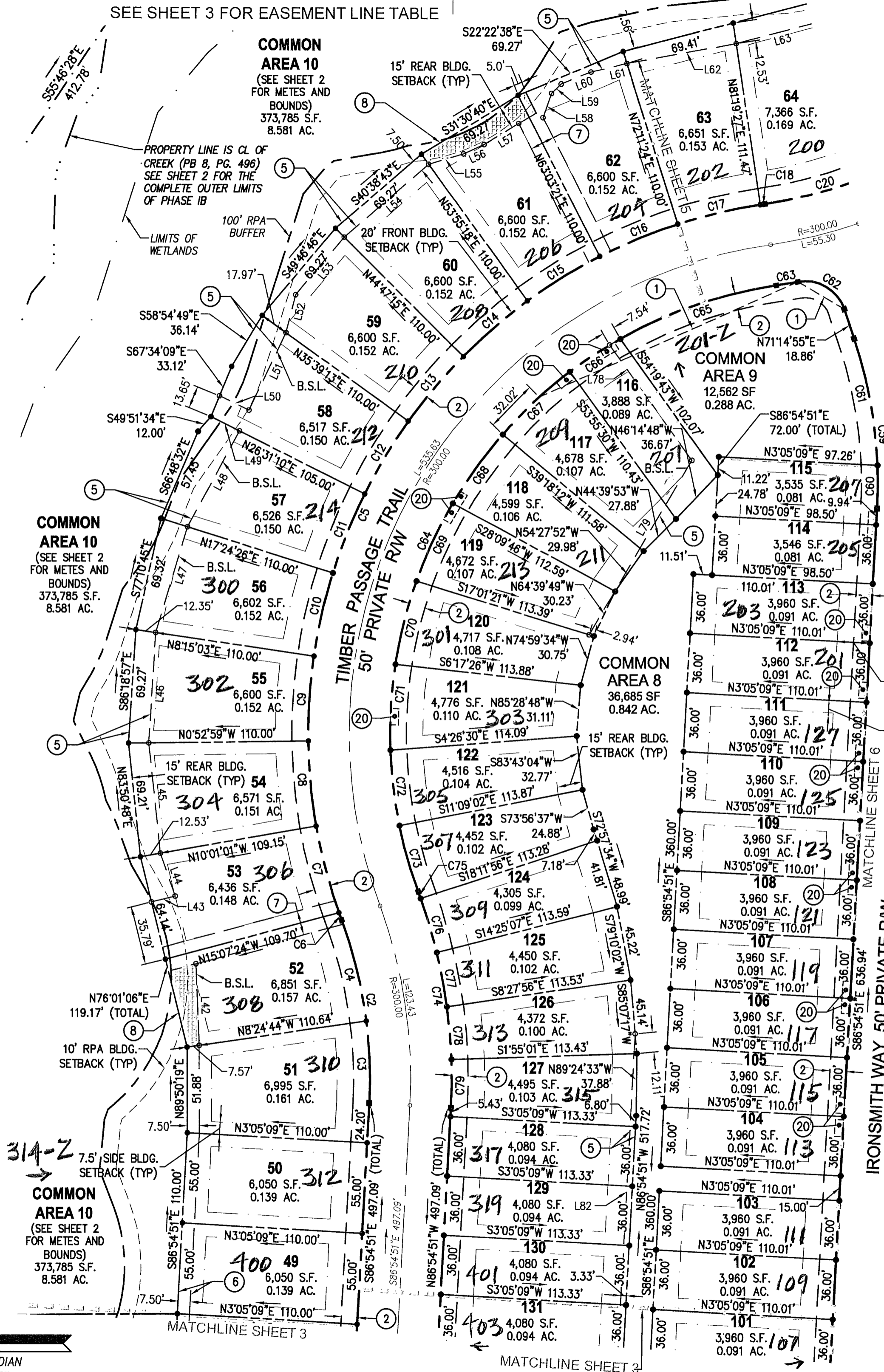


CURVE TABLE						
CURVE #	DELTA	RADIUS	LENGTH	TANGENT	CHORD	CHORD BEARING
C1	3°54'03"	325.00'	22.13'	11.07'	22.12'	N88°51'52"W
C2	23°34'27"	275.00'	113.15'	57.39'	112.35'	N81°17'56"E
C3	10°24'08"	275.00'	49.93'	25.03'	49.86'	N87°53'05"E
C4	13°10'18"	275.00'	63.22'	31.75'	63.08'	N76°05'52"E
C5	102°17'53"	325.00'	580.27'	403.48'	506.21'	S59°20'21"E
C6	0°51'59"	325.00'	4.91'	2.46'	4.91'	S69°56'42"W
C7	9°36'17"	325.00'	54.48'	27.30'	54.42'	S75°10'50"W
C8	9°08'03"	325.00'	51.81'	25.96'	51.76'	S84°33'00"W
C9	9°08'03"	325.00'	51.81'	25.96'	51.76'	N86°18'57"W
C10	9°08'03"	325.00'	51.81'	25.96'	51.76'	N77°10'54"W
C11	9°08'03"	325.00'	51.81'	25.96'	51.76'	N68°02'52"W
C12	9°08'03"	325.00'	51.81'	25.96'	51.76'	N58°54'49"W
C13	9°08'03"	325.00'	51.81'	25.96'	51.76'	N49°46'46"W
C14	9°08'03"	325.00'	51.81'	25.96'	51.76'	N40°38'43"W
C15	9°08'03"	325.00'	51.81'	25.96'	51.76'	N31°30'40"W
C16	9°08'03"	325.00'	51.81'	25.96'	51.76'	N22°22'38"W
C17	9°08'03"	325.00'	51.81'	25.96'	51.76'	N13°14'35"W
C18	0°29'09"	325.00'	2.76'	1.38'	2.76'	N8°25'59"W
C19	26°28'55"	275.00'	127.10'	64.71'	125.98'	S21°25'52"E
C20	16°02'39"	275.00'	77.01'	38.76'	76.75'	N16°12'44"W
C21	10°26'16"	275.00'	50.10'	25.12'	50.03'	N29°27'12"W
C22	28°51'04"	275.00'	138.48'	70.74'	137.02'	S20°14'48"E
C23	9°20'24"	275.00'	44.83'	22.46'	44.78'	N30°00'08"W
C24	10°44'35"	275.00'	51.56'	25.86'	51.49'	N19°57'39"W
C25	8°46'06"	275.00'	42.08'	21.08'	42.04'	N10°12'18"W
C26	27°54'14"	50.00'	240.67'	45.19'	67.05'	S89°11'07"W
C27	42°53'15"	25.00'	18.71'	9.82'	18.28'	S27°15'53"E
C28	18°59'42"	50.00'	16.58'	8.36'	16.50'	N39°12'40"W
C29	45°01'05"	50.00'	39.29'	20.72'	38.28'	N7°12'16"W
C30	45°01'05"	50.00'	39.29'	20.72'	38.28'	N37°48'49"E
C31	45°01'05"	50.00'	39.29'	20.72'	38.28'	N82°49'54"E
C32	44°40'53"	50.00'	38.99'	20.55'	38.01'	S52°19'06"E
C33	49°05'10"	50.00'	42.84'	22.83'	41.54'	S5°26'05"E
C34	27°58'14"	50.00'	24.41'	12.45'	24.17'	S33°05'37"W
C35	55°24'54"	25.00'	24.18'	13.13'	23.25'	N19°22'17"E
C36	26°20'10"	225.00'	103.42'	52.64'	102.51'	N21°30'15"W
C37	16°04'40"	225.00'	63.14'	31.78'	62.93'	S16°22'30"E
C38	10°15'30"	225.00'	40.28'	20.20'	40.23'	S29°32'35"E
C39	7°42'27"	325.00'	43.72'	21.89'	43.69'	N30°49'06"W
C40	81°47'12"	25.00'	35.69'	21.65'	32.73'	N67°51'29"W
C41	21°50'12"	325.00'	123.86'	62.69'	123.12'	S82°10'02"W
C42	12°00'21"	325.00'	68.10'	34.18'	67.98'	N77°15'07"E
C43	9°49'51"	325.00'	55.76'	27.95'	55.69'	N88°10'13"E
C44	90°00'00"	25.00'	39.27'	25.00'	35.36'	S48°05'09"W
C45	10°54'52"	175.00'	33.34'	16.72'	33.29'	S2°22'17"E
C46	7°12'06"	175.00'	22.00'	11.01'	21.98'	N0°30'54"W
C47	3°42'46"	175.00'	11.34'	5.67'	11.34'	N5°58'20"W
C48	70°31'44"	25.00'	30.77'	17.68'	28.87'	S43°05'34"E

SEE SHEET 5 FOR CURVES 49-79



SEE SHEET 3 FOR EASEMENT LINE TABLE



PLAT OF SUBDIVISION
TRANQUILITY
PHASE IB

BRUTON DISTRICT COUNTY OF YORK VIRGINIA
Date: 01-11-23 Scale: 1"=50' Proj. No.: W10483-01 Proj. Contacts: SJB/TRS

SHEET 4 OF 6

LEGEND

- PROPERTY LINE
- RIGHT-OF-WAY LINE
- BUILDING SETBACK LINE
- DRAINAGE OR UTILITY EASEMENT
- UTILITY EASEMENT
- CENTERLINE OF ROAD
- 100' RPA BUFFER
- LIMITS OF WETLANDS
- IRON PIN FOUND
- IRON ROD FOUND
- MONUMENT SET
- IRON ROD SET
- RESOURCE PROTECTION AREA
- INDICATES DRAINAGE AND/OR RETAINING WALL MAINTENANCE EASEMENTS HEREBY CONVEYED TO THE TRANQUILITY HOMEOWNER'S ASSOCIATION



EASEMENT LEGEND

- ① VARIABLE WIDTH SIGHT EASEMENT HEREBY CONVEYED TO YORK COUNTY.
- ② 10' LANDSCAPE PRESERVATION EASEMENT HEREBY CONVEYED TO YORK COUNTY.
- ⑤ VARIABLE WIDTH DRAINAGE EASEMENT HEREBY CONVEYED TO THE TRANQUILITY HOMEOWNERS ASSOCIATION, INC.
- ⑥ 7.5' DRAINAGE EASEMENT HEREBY CONVEYED TO THE TRANQUILITY HOMEOWNERS ASSOCIATION, INC.
- ⑦ 15' INGRESS/EGRESS AND DRAINAGE EASEMENT HEREBY CONVEYED TO THE TRANQUILITY HOMEOWNERS ASSOCIATION, INC.
- ⑧ VARIABLE WIDTH DRAINAGE AND RETAINING WALL MAINTENANCE EASEMENT HEREBY CONVEYED TO THE TRANQUILITY HOMEOWNERS ASSOCIATION, INC. (NO EXCAVATION OR GRADE ALTERATIONS ARE PERMITTED TO INTERIOR AREA BEHIND RETAINING WALL AFTER INSTALLATION)
- ⑳ 5' X VARIABLE LENGTH WATERLINE EASEMENT TO BE CONVEYED TO THE CITY OF NEWPORT NEWS

APPROVED:
YORK COUNTY BOARD OF SUPERVISORS
BY: [Signature] PLAT APPROVING AGENT
DATE: SEPTEMBER 18, 2023

STATE OF VIRGINIA
COUNTY OF YORK
IN THE CLERK'S OFFICE OF THE CIRCUIT COURT FOR THE COUNTY OF YORK-POQUOSON THE 28th DAY OF September, 23.
THIS MAP WAS PRESENTED AND ADMITTED TO RECORD AS THE LAW DIRECTS, AS INSTRUMENT NO. 230015056
TESTE: KRISTEN N. NELSON, CLERK CLERK
BY: [Signature]