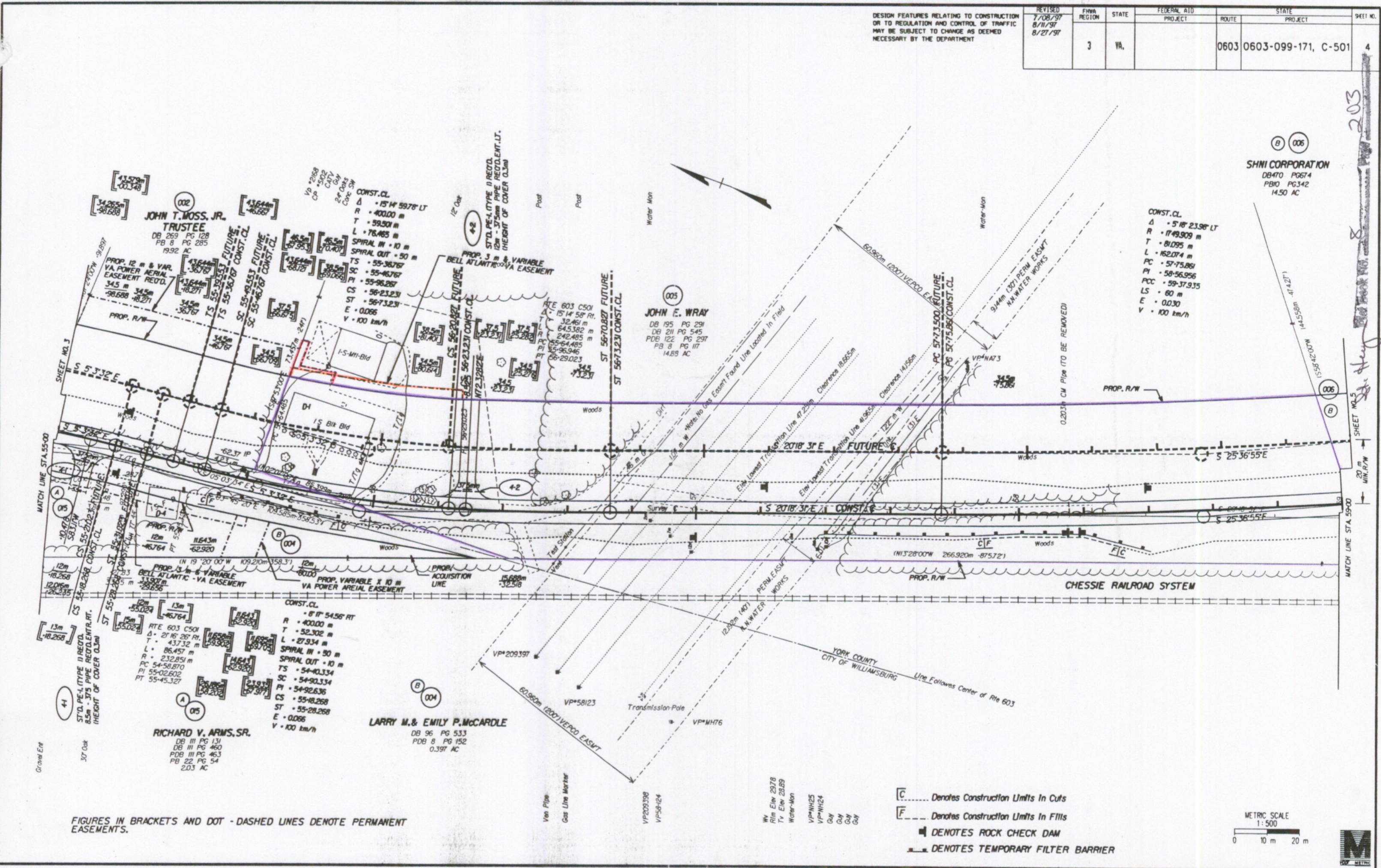


SUFFOLK DISTRICT DEPARTMENT

DESIGN FEATURES RELATING TO CONSTRUCTION OR TO REGULATION AND CONTROL OF TRAFFIC MAY BE SUBJECT TO CHANGE AS DEEMED NECESSARY BY THE DEPARTMENT

REVISED 7/08/97 8/11/97 8/27/97	FHWA REGION 3	STATE VA.	FEDERAL AID PROJECT 0603	ROUTE 0603-099-171, C-501	STATE PROJECT 0603-099-171, C-501	SHEET NO. 4
--	------------------	--------------	-----------------------------	------------------------------	--------------------------------------	----------------

SUPERVISED BY R. O. HARMON  
 DESIGNED BY E. M. HOLLOWAY  
 CAD OPERATOR/DATE/SCALE/PROJECT NO.  
 REVISIONS BY E. L. STIMPINGFIELD



006  
**SHNI CORPORATION**  
 DB470 PG674  
 PB0 PG342  
 14.50 AC

002  
**JOHN T. MOSS, JR. TRUSTEE**  
 DB 269 PG 128  
 PB 8 PG 285  
 19.92 AC

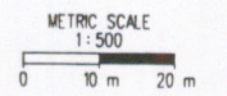
003  
**JOHN E. WRAY**  
 DB 195 PG 291  
 DB 211 PG 545  
 PDB 122 PG 297  
 PB 8 PG 117  
 14.89 AC

004  
**RICHARD V. ARMS, SR.**  
 DB III PG 131  
 DB III PG 460  
 PDB III PG 463  
 PB 22 PG 54  
 2.03 AC

004  
**LARRY M. & EMILY P. McCARDLE**  
 DB 96 PG 533  
 PDB 8 PG 152  
 0.397 AC

FIGURES IN BRACKETS AND DOT - DASHED LINES DENOTE PERMANENT EASEMENTS.

- [C] Denotes Construction Limits In Cuts
- [F] Denotes Construction Limits In Fills
- DENOTES ROCK CHECK DAM
- DENOTES TEMPORARY FILTER BARRIER



PLAN NO. A	PROJECT 0603-099-171	FILE NO.	SHEET NO. 4
---------------	-------------------------	----------	----------------