

SUFFOLK DISTRICT DESIGN UNIT

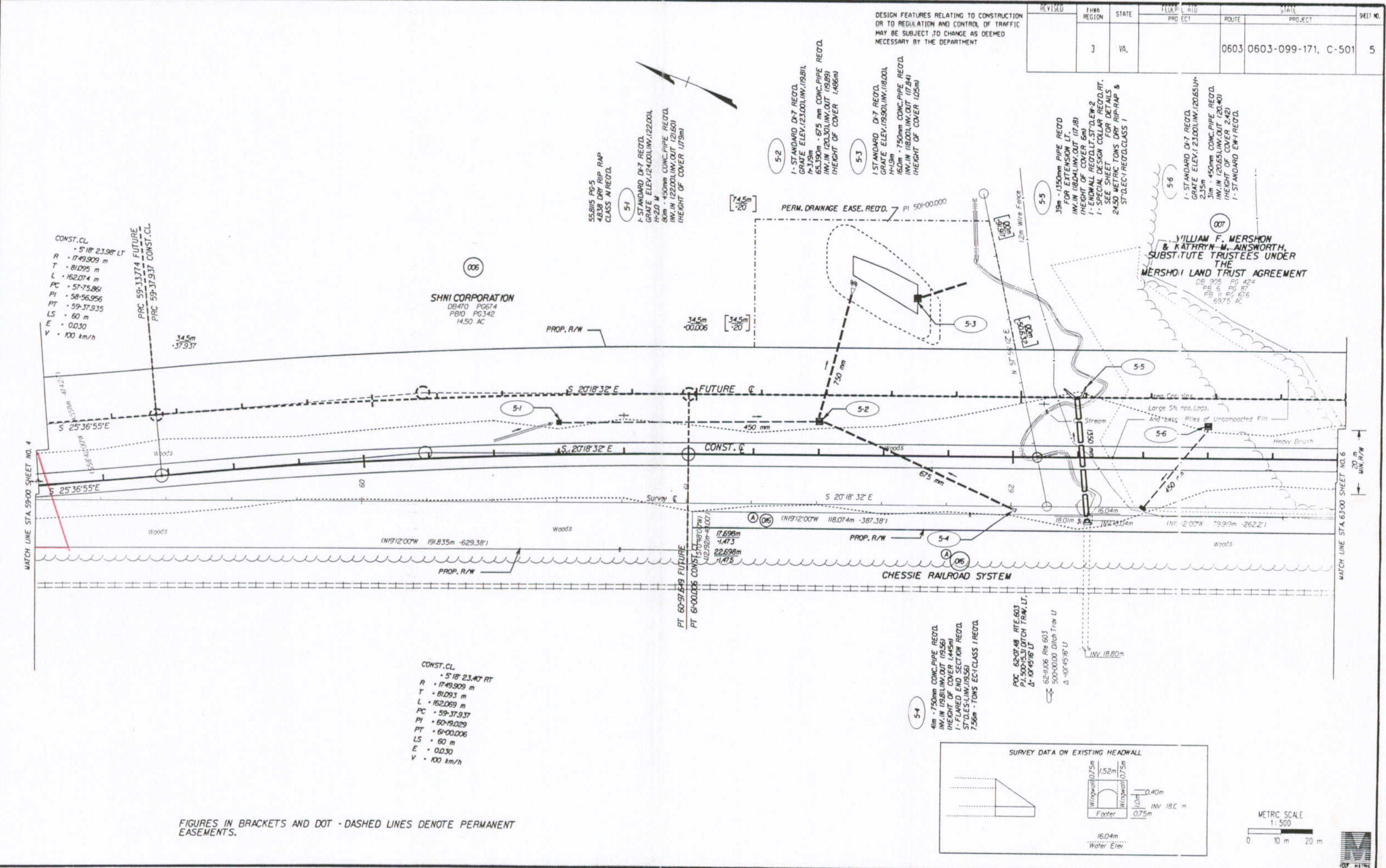
61

62

63

| REVISED | FHWA REGION | STATE | PROJECT | ROUTE | STATE PROJECT | SHEET NO. |
|---------|-------------|-------|---------|-------|---------------------|-----------|
| | 3 | VA. | | 0603 | 0603-099-171, C-501 | 5 |

DESIGN FEATURES RELATING TO CONSTRUCTION OR TO REGULATION AND CONTROL OF TRAFFIC MAY BE SUBJECT TO CHANGE AS DEEMED NECESSARY BY THE DEPARTMENT



CONST. CL
 • 5'18" 23.98' LT
 R - 1749.909 m
 T - 81.095 m
 L - 162.074 m
 PC - 57-75.881
 PI - 58-56.956
 PT - 59-37.935
 LS - 60 m
 E - 0.030
 V - 100 km/h

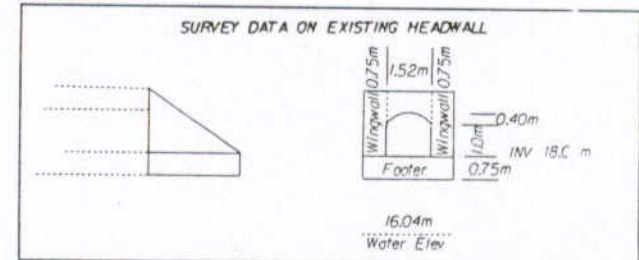
SHNI CORPORATION
 DB470 PG674
 PB10 PG342
 14.50 AC

WILLIAM F. MERSHON & KATHRYN M. ANSWORTH, SUBSTITUTE TRUSTEES UNDER THE MERSHON LAND TRUST AGREEMENT

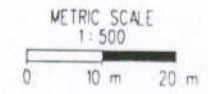
5-4
 4m - 750mm CONC. PIPE REQD. INV. IN (19.81)/INV. OUT (19.56) (HEIGHT OF COVER 1.45m)
 1- FLARED END SECTION REQD. STD. LES. 4 IN (19.56)
 7-56m - TONS EC-1 CLASS I REQD.

POC 62-07-48 RTE. 603
 P.I. 500-0000 DITCH TRAM. LT.
 Δ 10°45'16" LT
 62-1106 Rte 603
 500-0000 Ditch Trm U
 Δ 10°45'16" U

CONST. CL
 • 5'18" 23.40' RT
 R - 1749.909 m
 T - 81.093 m
 L - 162.069 m
 PC - 59-37.937
 PI - 60-19.029
 PT - 61-00.006
 LS - 60 m
 E - 0.030
 V - 100 km/h



FIGURES IN BRACKETS AND DOT - DASHED LINES DENOTE PERMANENT EASEMENTS.



SURVEYED BY: J. H. HOLLOWELL
 SUPERVISED BY: R. J. SCOTT, JR. (757) 925-1558
 DESIGNED BY: R. J. SCOTT, JR.
 CADD OPERATOR: R. J. SCOTT, JR.
 REVISED BY:

02/26/97 08:49:04