

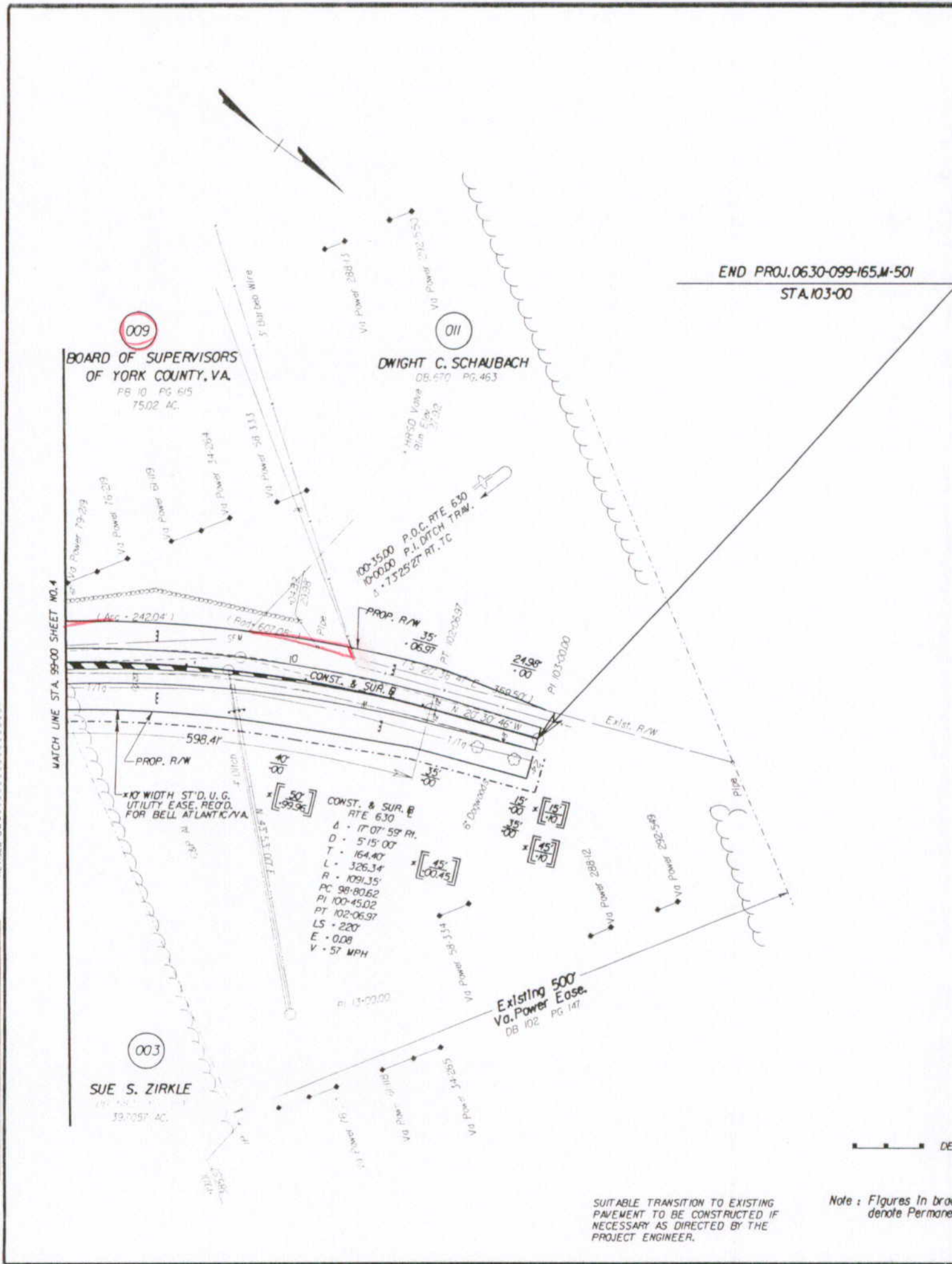
SUFFOLK DISTRICT DESIGN UNIT

DESIGN FEATURES RELATING TO CONSTRUCTION OR TO REGULATION AND CONTROL OF TRAFFIC MAY BE SUBJECT TO CHANGE AS DEEMED NECESSARY BY THE DEPARTMENT

REVISED	FHWA REGION	STATE	FEDERAL AID PROJECT	ROUTE	STATE PROJECT	SHEET NO.
01-30-97	3	VA.		630	0630-099-165, M-501	5

100

SUPERVISED BY: E. N. HOLLOWELL  
 DESIGNED BY: D. B. WINSLOW  
 CAD/OPERATION: [unclear]  
 REVISED BY: [unclear]



END PROJ. 0630-099-165, M-501  
 STA. 103+00

BOARD OF SUPERVISORS  
 OF YORK COUNTY, VA.  
 PB 10 PG 415  
 75.02 AC.

DWIGHT C. SCHAUBACH  
 DB 670 PG 463

SUE S. ZIRKLE  
 33.7057 AC.

CONST. & SUR. E  
 RTE 630  
 Δ - 17° 07' 59" RI  
 D - 5' 15" 00'  
 T - 164.40'  
 L - 326.34'  
 R - 1091.35'  
 PC 98+80.62  
 PI 100+45.02  
 PT 102+06.97  
 LS - 220'  
 E - 0.08  
 V - 57 MPH

— — — — — DEMOTES PROPOSED TEMPORARY FILTER BARRIER.

SUITABLE TRANSITION TO EXISTING PAVEMENT TO BE CONSTRUCTED IF NECESSARY AS DIRECTED BY THE PROJECT ENGINEER.

Note: Figures in brackets and dot-dashed lines denote Permanent Easements.

