

Design File: /home/.../0128/0128.dwg
 Ref. File: REF_0128/0128.dwg
 Levels On: 143

REVISED	FVA REGION	STATE	FEDERAL AID PROJECT	ROUTE	STATE PROJECT	SHEET NO.
07/28/97	3	VA.		17	0017-099-V20, M-501	3
					RW201	

SUFFOLK DISTRICT DESIGN UNIT

POWER POLES PROPERTY OF VIRGINIA POWER
 2700 CROMWELL RD, RM 108
 NORFOLK, VA. 23509

TELEPHONE POLES PROPERTY OF BELL ATLANTIC
 3757 E. VA BEACH BLVD
 NORFOLK, VA. 23502

GAS LINES PROPERTY OF VIRGINIA NATURAL GAS
 750 DULIGENCE DRIVE
 NEWPORT NEWS, VA. 23606

HEMERY S OAKLEY
 GRACE G OAKLEY
 DB 149 PG 232
 PB 10 PG 18
 7.25 AC

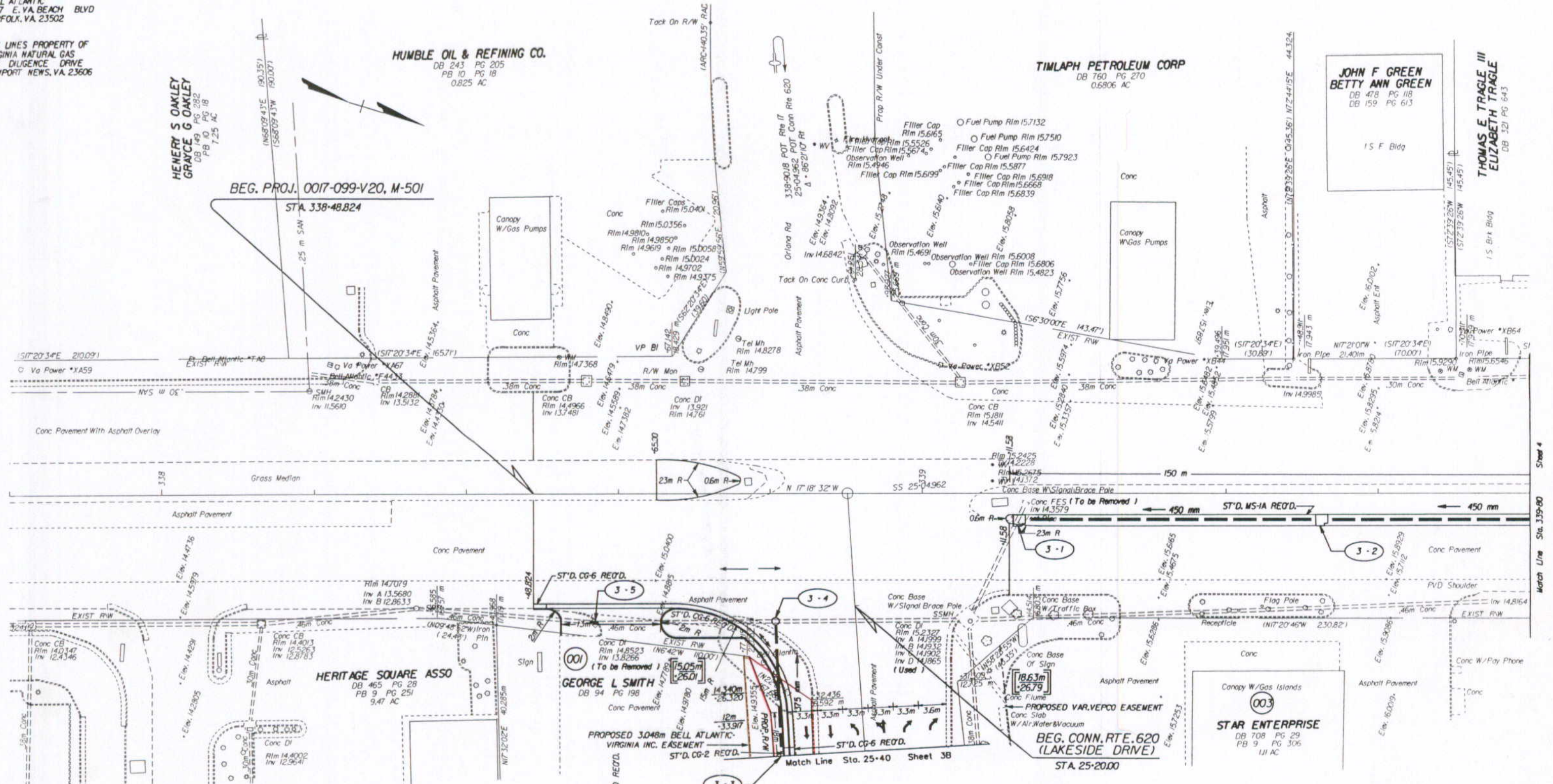
HUMBLE OIL & REFINING CO.
 DB 243 PG 205
 PB 10 PG 18
 0.825 AC

TIMLAPH PETROLEUM CORP
 DB 760 PG 270
 0.6906 AC

JOHN F GREEN
 BETTY ANN GREEN
 DB 478 PG 118
 DB 159 PG 613
 1 S F Bldg

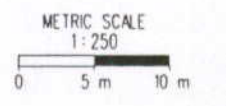
THOMAS E TRAGLE III
 ELIZABETH TRAGLE
 DB 321 PG 643
 1 S Brk Bldg

BEG. PROJ. 0017-099-V20, M-501
 STA. 338+48.824



- 3-1 1-Drop Intel Rec'd Median
 Sfd Di-3B, Double Slot (Mod'fied)
 L-12 M, H-1.47 M, Inv. (14.32)
- 3-2 1-Drop Intel Rec'd Median
 Sfd Di-3B, Double Slot (Mod'fied)
 L-12 M, H-1.32 M, Inv. (14.49)
- 3-3 1-Drop Intel Rec'd
 Sfd Di-3C, L-1.8 M, H-1.2 M, Inv. (14.07)
- 3-4 1.30 M - Sfd MH - 1 Rec'd
 L- Sfd MH - 1 Frame & Cover Rec'd
 Top Elev. (14.01)
- 3-5 17.50 M - 375 mm Conc. Pipe Rec'd
 Inv. In (14.07), Inv. Out (14.01)
 (Height of Cover 0.90 M)
- 3-1 40 M - 450 mm Conc. Pipe Rec'd
 Inv. In (14.49), Inv. Out (14.32)
 (Height of Cover 0.88 M)
- 3-3 120 M - 450 mm Conc. Pipe Rec'd Rt.
 (Height of Cover 0.80 M)

Figures in brackets and dot-dashed lines denote permanent easements.



SUPERVISED BY E. N. HOLLOWELL
 DESIGNED BY R. T. SCOTT, JR., P. B. MARSHALL (757) 925-2558
 CAD OPERATOR P. B. MARSHALL
 REVISED BY /home/.../0128/0128.dwg

07/28/97 14:03:58