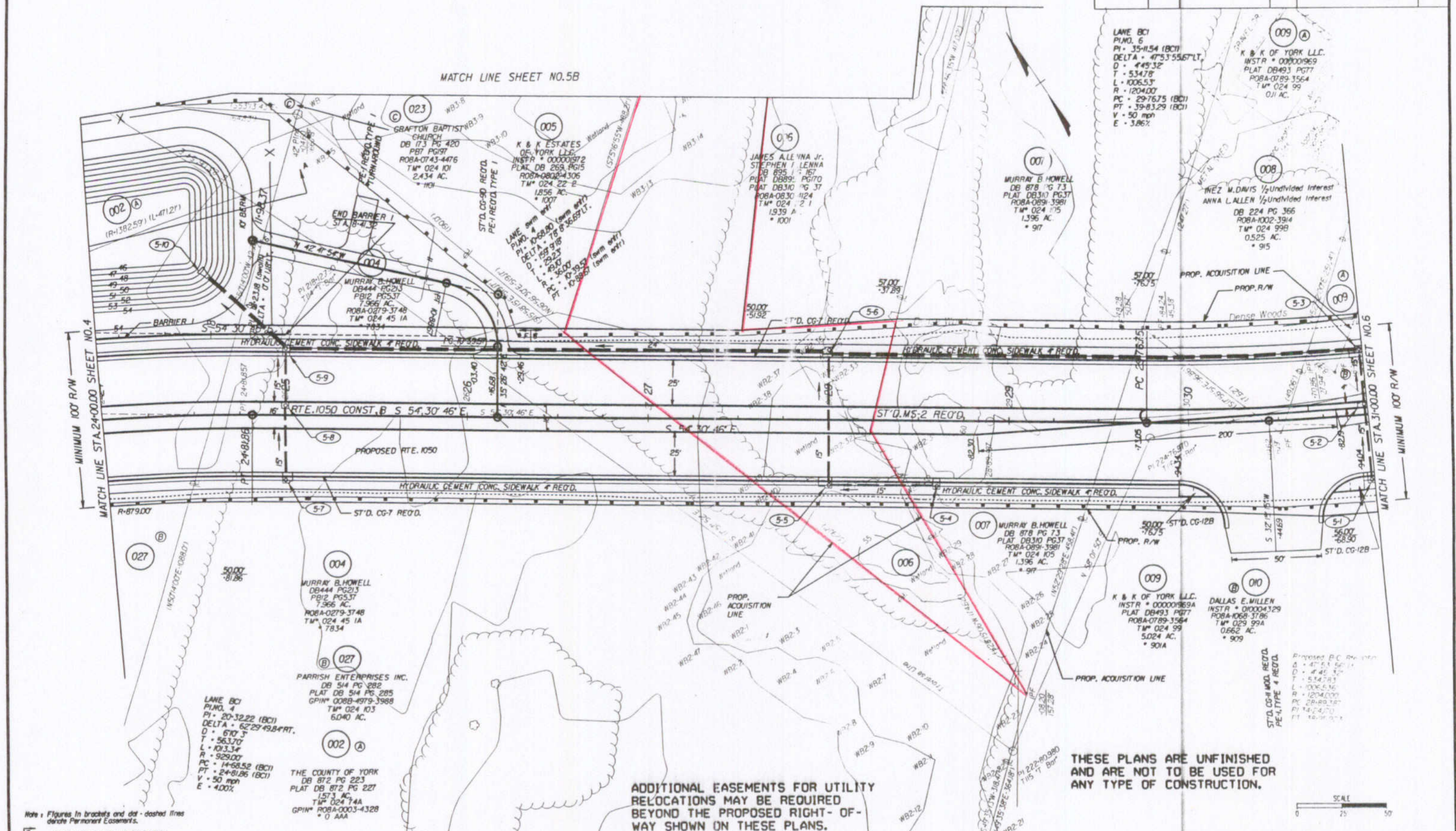


Design File - c:\documents of ms\_jacob\ref\14627\14627005.dgn Ref. File - c:\documents of ms\_jacob\ref\14627.dgn Levels On - 1:50.52:63  
 Ref. File - c:\documents of ms\_jacob\ref\14627.psdgn Ref. File - c:\documents of ms\_jacob\ref\14627.dgn Levels On - 1:60.82:63  
 Ref. File - c:\documents of ms\_jacob\ref\14627.dgn Ref. File - c:\documents of ms\_jacob\ref\14627.dgn Levels On - 1:63  
 Ref. File - c:\documents of ms\_jacob\ref\14627.dgn Ref. File - c:\documents of ms\_jacob\ref\14627.dgn Levels On - 1:63

SURVEYED BY - BOBRI, D. HAWK ...  
 SUPERVISED BY - SONIA HALLUMS-PONTON (757) 925-2560  
 DESIGNED BY - J. DIANE GEORGE (757) 925-3622  
 HAMPTON ROADS DISTRICT DESIGN UNIT

DESIGN FEATURES RELATING TO CONSTRUCTION OR TO REGULATION AND CONTROL OF TRAFFIC MAY BE SUBJECT TO CHANGE AS DEEMED NECESSARY BY THE DEPARTMENT

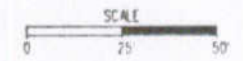
REVISED	STATE	FEDERAL AID PROJECT	ROUTE	STATE PROJECT	SHEET NO.
10-14-04	VA.		1050	1050-099-180, C-501 R/W-201	5



LANE BC1  
 P.L. NO. 6  
 PI - 35+11.54 (BC1)  
 DELTA - 47°53'55.67"LT.  
 D - 445.32'  
 T - 534.78'  
 L - 1006.53'  
 R - 1204.00'  
 PC - 29+76.75 (BC1)  
 PT - 39+83.29 (BC1)  
 V - 50 mph  
 E - 3.86%

ADDITIONAL EASEMENTS FOR UTILITY RELOCATIONS MAY BE REQUIRED BEYOND THE PROPOSED RIGHT-OF-WAY SHOWN ON THESE PLANS.

THESE PLANS ARE UNFINISHED AND ARE NOT TO BE USED FOR ANY TYPE OF CONSTRUCTION.



Note: Figures in brackets and dot-dashed lines denote Permanent Easements.  
 [---] Denotes Construction Limits in Cuts  
 [---] Denotes Construction Limits in Fills

NOTE: SEE GENERAL NOTES FOR E&S LEGEND

PLAN NO.	PROJECT	FILE NO.	SHEET NO.
	1050-099-180		5