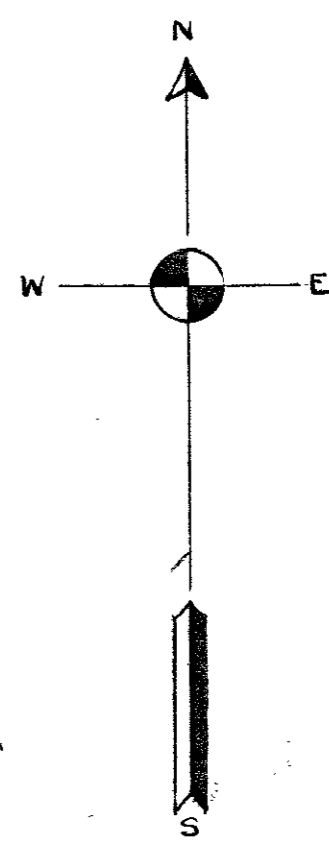
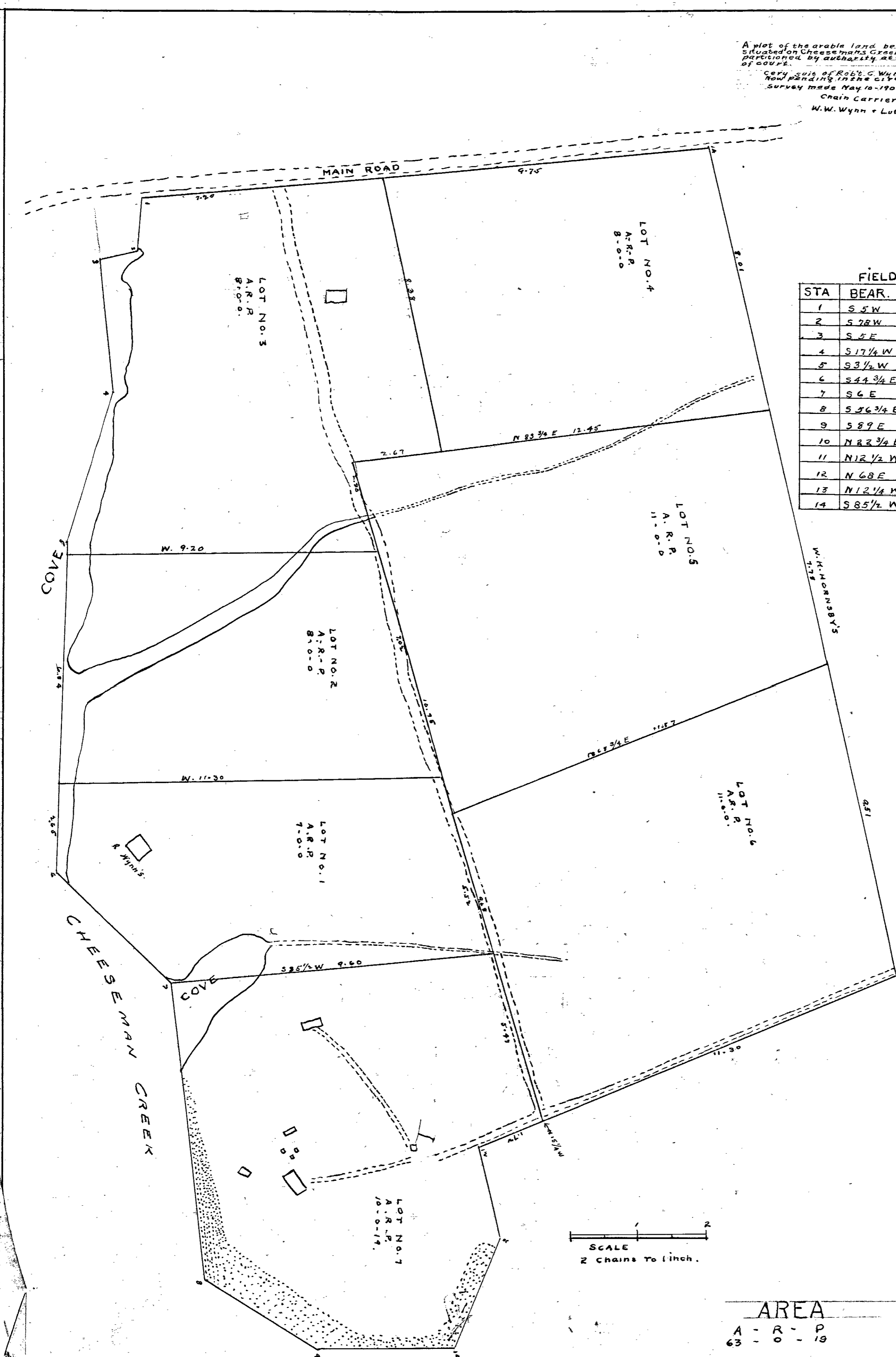


A plot of the arable land belonging to the Robt. C. Wynns Est. situated on Cheeseman's Creek, Crabtree, York County, Va. Surveyed and partitioned by authority of the Commissioners appointed by order of court.  
 Copy 2118 of Robt. C. Wynns, Esq. Wynn & Co. Now residing in the City of Louisville, Duval's of York Co. Survey made May 10-1904 - by W.M. Crooks - S. for Y.C. Chain Carriers Sworn  
 W.W. Wynn & Luther Foxwell.

FIELD NOTES			
STA	BEAR.	DIST	REMARKS
1	S 5 W	1.59 1/2	step on road
2	S 78 W	1.12	" in edge of marsh
3	S 5 E	3.97	" " " " "
4	S 17 1/4 W	4.68	" " " " "
5	S 3 1/2 W	9.85	" " COVE "
6	S 44 3/4 E	4.70	" " Mouth of Cove
7	S 6 E	8.99	"
8	S 56 3/4 E	3.89	"
9	S 89 E	4.09	"
10	N 82 3/4 E	7.62	" " " " "
11	N 12 1/2 W	2.71	"
12	N 68 E	13.35 1/2	" " LANE
13	N 12 1/4 W	25.32	" at end of lane
14	S 85 1/2 W	16.87 1/2	" on main Road



SCALE  
 2 CHAINS TO 1 INCH.

AREA  
 A - R - P  
 63 - 0 - 19

THIS PLAT IS A COPY  
 Original has been transferred to  
 Reserve Plat Book No. 1